

Recycle Right

PAPER

What you can recycle:

- Newspapers and glossy inserts
- Magazines
- Catalogs
- Phone Books
- Corrugated Cardboard
- Office Paper (put in bags)



What you cannot recycle:

- Cereal or shoe boxes or beverage containers (anything non-corrugated)
- Paper milk cartons
- Waxed paper

How to prepare paper:

- Paper and cardboard should be dry and clean

PLASTIC

What you can recycle:

- Numbers 1 through 7. Look for the numbers within the recycle symbol on the bottom of the container.
- Bottles, jugs, other rigid containers

What you cannot recycle:

- Motor oil, antifreeze or pesticide containers
- Styrofoam
- Plastic bags or film
- Toys
- Hose or pipe



How to prepare plastic:

- CONTAINERS MUST BE **CLEAN** - PLEASE RINSE
- **REMOVE CAPS, LIDS AND METAL RINGS**
- May leave labels on
- Please flatten containers

CANS

What you can recycle:

- Food and drink cans
- Metal ends of juice cans



What you cannot recycle:

- Paint cans
- Aerosol cans

How to prepare cans:

- Containers must be **CLEAN**. Please rinse out.
- Please flatten
- Remove labels

GLASS

What you can recycle:

- Bottles and jars
- Clear, brown or green

What you cannot recycle:

- Windows
- Ceramics
- Dishes
- Light Bulbs
- Broken Glass



How to prepare glass:

- Glass containers must be **CLEAN**. Please rinse out.
- Remove lids, caps and rings (discard in trash).

Where you recycle:

- Chariton- Southeast side of Hy-Vee parking lot. May drop off at any time.
- Derby- 1st week of month, Community Center
- Lucas- 2nd week of the month, Front Street
- Russell- Any time, City Park
- Williamson- 3rd week of the month, Community Center

For more information, contact the South Central Iowa Solid Waste Agency at 641-828-8545



Solid Waste Resources

From the South Central Iowa Solid Waste Agency

Where to find it	
Business Resources.....	3
Construction & Demolition Recycling.....	3
Hazardous Waste.....	4
Batteries	
CESQG small business	
Farm chemicals	
Household- HHW	
Paint	
Landfill.....	1
Accepted materials	
Fees	
Hours	
Organics.....	3
Food waste	
Wood waste	
Yard waste	
Poweshiek Co. Transfer Station.....	1
Accepted materials	
Fees	
Hours	
Recycling.....	2
SCISWA.....	4
Tires.....	3

SCISWA Landfill

The South Central Iowa Solid Waste Agency (SCISWA) serves the citizens of **Lucas, Marion, Monroe and Poweshiek** Counties. Waste will be accepted only from residents of these counties.

Location: 1736 Hwy. T-17, Tracy, Iowa 50256 - In eastern Marion County 3 miles South off of Hwy 92 or 4 miles North off of Hwy 5.

Hours: Monday - Friday, 7:30 am to 4:00 pm; Saturday, 7:30 am - Noon

Fees: Regular municipal solid waste\$22.00/ton
 Construction & Demolition (must be separated)\$22.00/ton
 Asbestos (call first)..... \$55.00/ton plus \$50.00/load
 Special Waste Authorized Materials..... \$22.00/ton plus \$50.00/load
 Yard Wastes- separate from garbage & no plastic bags...\$22.00/ton
 Metal/ white goods, separate from regular garbage.....no charge
 Waste oil (noncontaminated), auto batteries.....no charge
 Tires, see Tire section on page 3

NO free-flowing liquids or hazardous materials

More information: Call 515-828-8545

Poweshiek Co. Transfer Station

Solid waste from Poweshiek County is taken to the Transfer Station and then hauled by semi to the landfill in Marion County.

Location: on Hwy 6&63, 9 miles East of Grinnell

Hours: M-F, 7:30 am to 3:30 pm; Saturday, 8:00 am to 11:30am

Fees: Regular municipal solid waste\$40.00/ton
 Metal / white goods - minimum \$5 charge.....\$40.00/ton
 Waste oil (noncontaminated), auto batteries.....no charge
 Tires, See Tire section on page 3

NO free-flowing liquids, hazardous materials or yard waste (brush, trees, lawn clippings, leaves, etc.)

More information: 515-528-2801



Recycling Programs and Locations

Lucas County

Drop-off Locations and Times:

Chariton: Southeast corner of Hy-Vee parking lot; Anytime

Russell: City Park; All day Tuesday and Thursdays

Derby: Community Center; 1st Saturday of month

Lucas: Front Street; 2nd Saturday of month

Williamson: Community Center; 3rd Saturday

Call your city or the South Central Iowa Solid Waste Agency for list of accepted items at 515-828-8545.

Monroe County

Drop-off Locations and Times:

Albia:

County Shop, South edge of town on Hwy 5; 1st & 3rd Saturdays of month, 8:00 am to noon.

Lovilia:

City Hall, 2nd Saturday of month, 8:00 am - 10:00 am.

Melrose:

Community Center, 4th Saturday of month, 8:00 am to 10:00 am.

Call the Supervisors at 515-932-7706 or SCISWA at 515-828-8545 for a list of recyclables.

About Your Recyclables

Each city and county program has its own requirements for what is accepted and how it should be prepared. That's why it's important to know what your program accepts.

There are some things to know that are true for every program:

All containers must be clean - rinsed out & dry!

Metal cans and plastic containers should be **flattened** if possible and labels should be removed from metal cans. Paper should be dry.

If you have any questions about what is accepted or how to prepare recyclables, call SCISWA at 515-828-8545.

Marion County

Knoxville:

Drop off at Brown's Sanitation, 610 North Depot St. Times: M-F, 8:00 am to 4:30 pm and Saturdays, 8:00 am to 1:00 pm. Call 842-4170 for more information.

Curbside: Call your hauler for curbside service.

Pella:

Curbside: City provides curbside service. For information on recyclable items call City Hall at 515-628-4173 or Midwest Sanitation at 515-628-2610.

Drop-off: Midwest Sanitation, 906 W. 9th, M-F, 8:00 am - 5:00 pm; or Red Rock Rubbish Removal, 419 Oskaloosa St.

Pleasantville:

Drop-off: Under the Water Tower; Anytime. Call City Hall for recyclable items: 848-3316.

Landfill:

Drop-off: 1736 Hwy T-17, Tracy; M-F, 7:30 am - 4:00 pm, Saturday, 7:30 am to Noon. Call 828-8545 for list of recyclables.

Poweshiek County

Brooklyn, Deep River, Malcom, Searsboro:

Curb side service is provided by the cities. For information and list of recyclables, call: Brooklyn, 515-522-7066; Deep River, 515-595-2686; Malcom, 515-528-4245; or Audas Sanitation at 515-623-5691.

Grinnell:

Curbside provided by city. Call 515-236-2632 for a list of recyclables.

Drop-off: City Garage, 1313 1st Ave.; M-F, 7:00 am to 4:00 pm.

Montezuma:

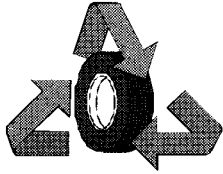
Curbside provided by city. Call City Hall, 515-623-5102 or R&L Sanitation at 515-623-3999.

Transfer Station:

Drop-off: 9 miles east of Grinnell on Hwys 6 & 63. Hours: M-F, 7:30 am - 3:30 pm; Saturday, 8:00 am to 11:30 am. Call 515-528-2801 for more information.

Victor

Drop off: City Building at 501 1st St., anytime Call Jeff or Tom at 319-647-3750 for information.



Waste Tire Disposal

To avoid health and safety hazards, tires should be disposed of properly.

Tires should be returned to the dealers when buying new ones. That is the most important thing to do. Tires may also be taken to the SCISWA landfill and Poweshiek County Transfer Station. See fee schedule (opposite).

For large quantities of tires contact:

UT Tires
Des Moines, IA
515-262-4900

GreenMan Technologies
Cedar Rapids, IA
319-366-6961

DNR Contact: Mel Pins, 515-281-8489

Landfill

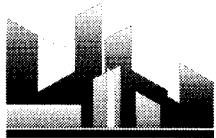
Car, 15" and smaller.....	\$1.00 ea
Truck.....	\$2.00 ea
With rims.....	\$5.00 extra ea
Tractor.....	\$8.00 ea

Over 8 tire on load: \$70.00 per ton
(rate may change; call 515-828-8545 for current rates)

Transfer Station

Car.....	\$1.00 ea
Lt. Truck.....	\$1.25 ea
Truck.....	\$2.50 ea
Tractor.....	\$9.00 ea
Heavy Equipment.....	\$25.00 ea
With Rims.....	\$5.00 extra ea

call 515-528-2801 for more information.



Business Resources

These waste reduction programs are available at no charge to businesses:

Iowa Waste Exchange

The IWE is a free and confidential program promoting the reuse and recycling of business and industry by-products and waste.

It can identify your company's waste stream and facilitate transfer of materials to entities who can reuse or recycle them and help locate valuable secondary materials for use in your business

Contact: In Lucas, Marion and Monroe Counties:
Gary Dill, 515-683-5269 or 800-726-2585 ext. 5269;
gdill@ihcc.cc.ia.us

In Poweshiek County: Brenda Tjaden, 319-398-4904;
btjaden@kirkwood.cc.ia.us

Iowa Waste Reduction Center

If you have fewer than 200 employees

IWRC provides small businesses free, nonregulatory, confidential, on-site assistance including waste audits and state and federal regulation compliance assistance.

Call 1-800-422-3109; Web site: www.iwrc.org

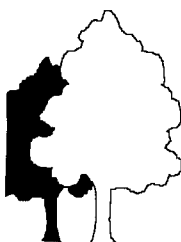
Waste Reduction Assistance Program (WRAP)

If you have more than 100 employees

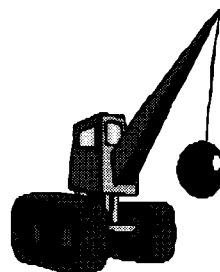
WRAP is a free, confidential, nonregulatory and voluntary program that provides on-site assessments to find opportunities to help reduce waste and save money, increase productivity and improve environmental performance.

Contact: Brian Tormey, 515-281-8927;
btormey@max.state.ia.us

Organics



Compost: Wood, food, yard wastes
Chamness Technologies, Inc.
24820 - 160th St.
Eddyville, IA 52553 cticompost@lisco.com
Call 515-969-5702 for tipping fees and accepted materials.



Construction & Demolition

Central Recycling, Inc.
1805 S.E. Hartford
Des Moines, IA 50320
Call 515-244-0719 for tipping fees



Hazardous Wastes

HOUSEHOLD HAZARDOUS WASTE

SCISWA has contracted with the Metro Waste Authority's Regional Collection Center (RCC) in Bondurant for household hazardous waste (HHW) disposal for area citizens.

Citizens in Lucas, Marion, Monroe and Poweshiek Counties may take advantage of these programs:

- **Mobile collection events-** The Clean Up Crew mobile collection unit visits each county at least once per year. Household hazardous waste may be brought to these events from *residences*. Call SCISWA for a list of dates for mobile events and accepted materials.
- **Drop off** at the Bondurant site. Household waste may be dropped off by citizens at the RCC in Bondurant year round. For hours and list of accepted materials call the RCC at 1-888-603-CREW.
- **Businesses, institutions, schools, churches, etc.** who qualify as small generators may bring waste to the RCC for a fee (see opposite).

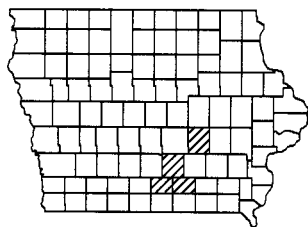
Starting in mid-2000 a satellite facility will be placed at the SCISWA landfill near Tracy. Drop off of HHW from households will be by appointment only. Call 515-828-8545 for information.

BATTERIES

Batteries that must be brought to a HHW facility or collection event: lead acid batteries; Mercuric-oxide - batteries used in hearing aids; Nickel-cadmium (NiCad) - rechargeable batteries used in power tools, appliances, etc.; and small lead acid batteries used in laptop computers, cell phones, etc.

Batteries you can dispose of in trash: alkaline and carbon zinc including nonrechargeable batteries used in toys, radios, etc.

SCISWA



Printed on recycled paper

The South Central Iowa Solid Waste Agency (SCISWA) is a 4-county intergovernmental unit serving Lucas, Marion, Monroe and Poweshiek Counties.

Board of Directors: Ed Elam, Chair, from Lucas County; Harry McNaull, Vice Chair, from Poweshiek County; Brian Morrissey, Marion County; Mike Beary, Monroe County.

Director: Craig "Pete" Duffy

CESQG: PROGRAM FOR SMALL BUSINESSES, INSTITUTIONS

Businesses and institutions in SCISWA's 4-county area that are *Conditionally Exempt Small Quantity Generators (CESQG's)* of hazardous waste (less than 220 lbs. per month) are eligible for our program.

CESQG's may bring their hazardous waste to the Regional Collection Center in Bondurant for a fee. RCC staff will assist with eligibility and certification requirements and other rules and regulations involved in hazardous waste disposal. Call 1-888-603-CREW or 515-967-5512 for information.

FARM CHEMICALS

For information and assistance on disposing farm chemicals call the Regional Collection Center toll free at 1-888-603-CREW.

PAINT

Oil Based paint- All oil based paint and lead-containing paint (manufactured before 1980) must be disposed of at a mobile HHW collection event or at the Regional Collection Center in Bondurant. Call 515-828-8545 for information.

Latex paint- If it is dry, latex paint may be disposed of in the trash. Take the lid off so your hauler knows it is dry.

To dry the paint: for small quantities, take the lid off away from children and pets and let dry. For larger quantities, mix kitty litter, sawdust or other absorbent material with it and let dry.

If you have questions about any hazardous waste call us at 515-828-8545.

You can reach us at:

Address: 1736 Hwy T-17,
Tracy, IA 50256

Phone: 515-828-8545

Fax: 515-842-3722

E-mail: landfill@sciswa.org

Web Site: www.sciswa.org

This material was prepared with the support of the Iowa Department of Natural Resources Grant No. 97-G550-08G. However, any opinions, findings, conclusions or recommendations expressed herein are those of the author(s) and do not necessarily reflect the views of DNR.

SUPPORT RECYCLING IN THE CITY OF CHARITON

How recycling helps conserve valuable resources

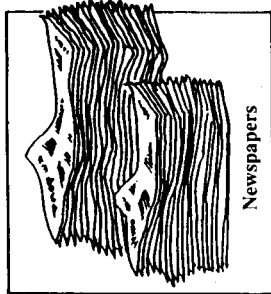
AMERICA TURNS TO RECYCLING

America is facing up to its garbage problems. As a nation, we generate more trash than any other country in the world — approximately 160 million tons per year of residential and commercial solid waste. In fact, each and every one of us disposes of approximately three to four pounds of trash per day. No wonder the problems are beginning to pile up!

There's good news though.

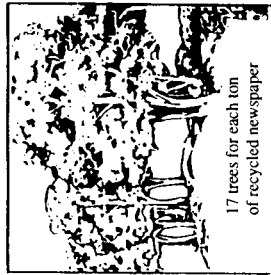
While each of us is part of the problem, we also can make an impact on the solution. How? By making a commitment to reducing our individual contributions to the mounting garbage heap. By making a commitment to recycling.

Recycling



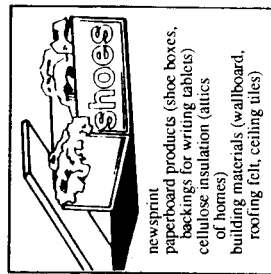
Newspapers

Saves

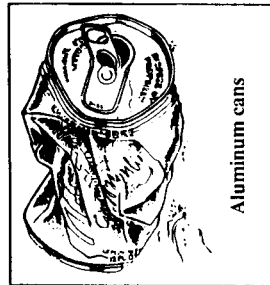


17 trees for each ton
of recycled newspaper

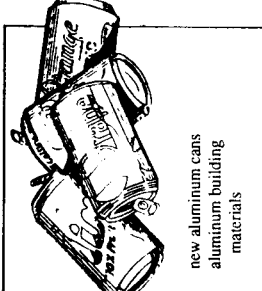
Used for



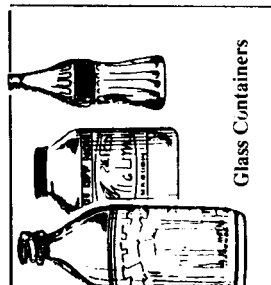
newsprint
paperboard products (shoe boxes,
backings for writing tablets)
cellulose insulation (attics
of homes)
building materials (wallboard,
roofing felt, ceiling tiles)



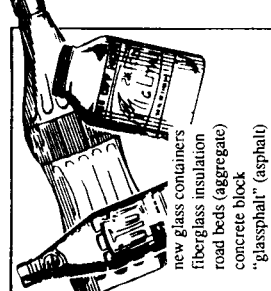
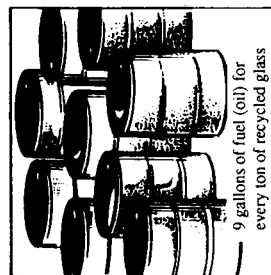
Aluminum cans



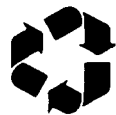
new aluminum cans
aluminum building
materials



Glass Containers



new glass containers
fiberglass insulation
road beds (aggregate)
concrete block
"glassphalt" (asphalt)



recycled paper



Dear Resident,

April 22, 1991, marked the 21st anniversary of Earth Day. Throughout the country people have been called on to become more aware of the environment around them and to do something to help preserve the earth's limited resources.

Recycling is a key element in managing our natural resources. Sources of materials used to make paper, glass, aluminum, tin and plastic are going to be used up some day. Anytime we can re-use or recycle these materials rather than use raw materials, we will help preserve natural resources.

Please take the time to save your recyclables. With your help, we will be able to make a difference. If you have any questions about the program, do not hesitate to call Waste Management of Iowa Recycling Information Line between 8:00 AM and 5:00 PM daily.

Respectfully,



WASTE MANAGEMENT OF IOWA

**INFORMATION
1-800-232-1859
(515) 265-5267**

WHAT WILL BE RECYCLED?

Newspapers (Clean & Dry) ONLY

NO String, NO Bags, NO Magazines

NO Telephone Books

Plastic Bottles

Milk & Laundry Room ONLY

Aluminum/Tin Cans

Empty, reasonably clean
Labels Must Be Removed

Glass Containers

Clear Glass ONLY
Rinsed & NO Lids

WE CANNOT ACCEPT

Glass:

Porcelain
Crystal
TV Tubes
Light Bulbs
Plate Window or
Safety Glass
Brown Glass
Green Glass

Plastics:

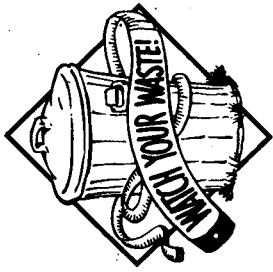
Margarine Tubs
Cheese Tubs
Window Cleaner Bottles
Oil Bottles
Pine Cleaner
Shampoo
Ketchup
Mustard
Pancake Syrup
Chocolate Bottles or
Medicine Bottles



ONLY

Items collected under the Bottle Deposit Law will be accepted but no refund will be given.

Are You Watching Your Waste?



- Help save landfill space
- Keep waste disposal costs down
- Help save the earth's natural resources for future generations

by using the **4 R'S** of waste management:

Reduce - *waste at the source.* The cost of waste disposal is increasing. It only makes sense both environmentally and economically to reduce the amount of trash that is discarded at the source.

Reuse - *products and containers.* Reduce waste by reusing containers, bags, paper, etc.; maintain and repair durable items; and sell or donate used goods rather than tossing them in the garbage.

Recycle - *items to use as raw materials for new products.* Besides keeping useful items out of the landfill, recycling uses less energy and conserves the earth's limited resources.

Re-buy - *recycled products.* Help make recycling work. Purchase recycled items. Ask store managers to stock items if you can't find them.

And Remember one more **R -- Respond.** Educate others on waste reduction and recycling. Be creative about ways to reduce waste. Participate in local recycling programs and if your community doesn't have one, contact officials and tell them you want access to recycling!

Contact SCISWA at 515/828-8545 for information on how you can watch your waste and for information about recycling programs in your community.

This material was prepared with the support of the Iowa Department of Natural Resources Grant No. 97-6550-08G. However, any opinions, findings, conclusions or recommendations expressed herein are those of the author(s) and do not necessarily reflect the views of DNR.

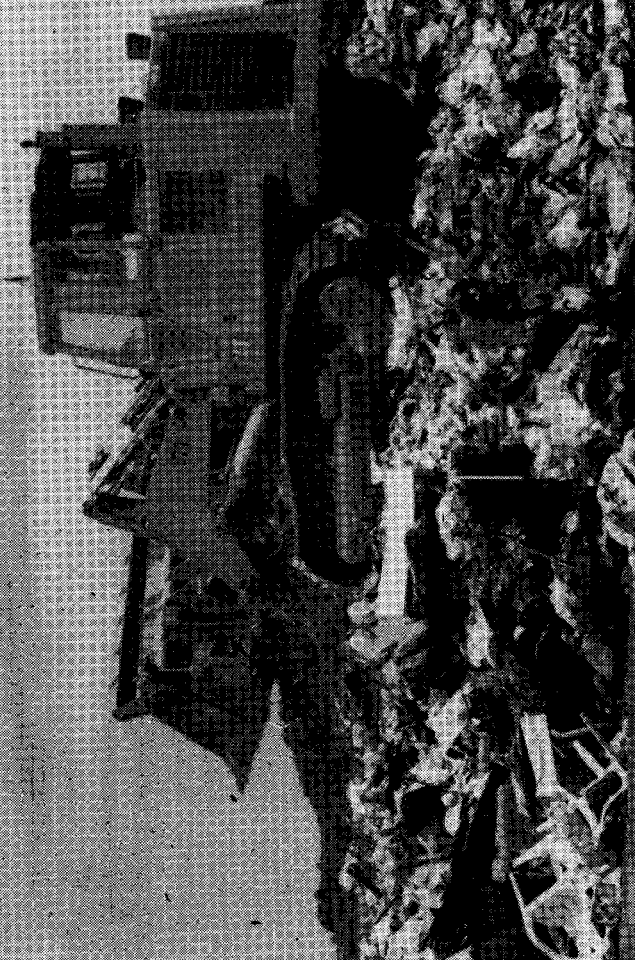


Printed on 100% Post-consumer Recycled Paper

South Central Iowa Solid Waste Agency

Serving the citizens of

Lucas, Marion, Monroe and
Poweshiek Counties



South Central Iowa Solid Waste Agency

The South Central Iowa Solid Waste Agency (SCISWA) is a four-county intergovernmental unit serving Lucas, Marion, Monroe and Poweshiek counties. The Agency area, which was formed in 1994, consists of 26 towns including Victor in Iowa County. The counties and cities in the Agency area joined forces so they could manage waste in the most effective and cost-efficient way possible and to better meet state and federal regulations.

Poweshiek County operates a Transfer Station near Malcom where waste is collected and then hauled daily by semi's to the landfill in Marion County.

SCISWA Board of Directors: Ed Elam, Chair, representing Lucas County; Abie Davis, Vice Chair, Marion County; Mike Beary, Monroe County and Harry McNaul, Poweshiek County. The board normally meets on the second Wednesday of every month at the Landfill offices near Tracy at 9:00 a.m.
Director: Craig "Pete" Duffy

About the landfill . . .

The Agency landfill - formerly the Marion County Landfill - is located near Tracy, Iowa, on 290 acres that once was the site a coal strip mine.

There are 23 monitoring wells around the perimeter of the landfill that are tested twice a year for various pollutants and other indicators of contamination. Water levels are tested in nine additional wells to ensure that leachate and other contaminants are not working their way into the groundwater. Samples from four surface water sites near the landfill are tested twice yearly.

The law and solid waste management . . .

State law prohibits the burying of whole tires, yard wastes, lead acid batteries, waste oil and redeemable beverage containers in the landfill. It also required by 1994, a 25% decrease from 1988 levels in the amount of waste buried at the landfill by 1994 and a 50% reduction by 2000.

Agencies must pay a fee of \$4.25 per ton - over and above operational costs - to the state. Of the fee, \$3.30 is sent to the DNR for various programs and \$0.95 is kept locally to help implement solid waste plans. If an agency meets its waste reduction goals, another \$0.50 is retained locally.

SCISWA Office and Landfill Location

Location: 1736 Hwy T17, Tracy, IA, 50156. (3 miles So. of Hwy 92 on T17)
Phone: 515-828-8545; **Fax:** 515-842-3722; **E-mail:** sciswa@se-iowa.net

Landfill User Fees

Municipal solid waste - general refuse- (Minimum charge of \$5.00)	per Ton	\$22.00
Yard Waste (leaves, grass clippings, twigs, brush)		\$22.00
Asbestos (plus \$50.00 per load)		\$55.00
Contaminated Soil (plus \$50.00 per load)		\$11.00
Construction and Demolition		\$22.00
<i>Construction and Demolition must be separated from regular garbage.</i>		
Special Waste Authorized Materials (plus \$50.00 per load)		\$22.00
Large Items (plus \$30.00 each)		\$22.00

Other items - PLEASE SEPARATE FROM REGULAR GARBAGE

Batteries	NO CHARGE
Junk Vehicles	\$75.00
White Goods, Household Appliances	NO CHARGE
(Dryers, dish washers, water heaters, refrigerators, etc.; Scrap metal.)	
Oil, non-contaminated	NO CHARGE
Oil Filters	NO CHARGE
Tires:	
With rims	\$5.00 each
Car, 15" and smaller	\$1.00 each
Truck	\$2.00 each
Tractor	\$8.00 each
Over 8 tires on a load-	\$70.00 per ton

Items not accepted: NO free-flowing liquids, NO hazardous substances such as acids, flammables, paint thinners, etc. All paint cans must be dry or empty.

Hours of Operation

Monday through Friday: 7:30 a.m. to 4:00 p.m.; Saturday: 7:30 a.m. to noon.

Closed Sundays and these holidays: New Year's Day; Memorial Day, July 4, Thanksgiving and Christmas

Open half-days (7:30 a.m. to noon) on: Presidents Day; Labor Day, Veteran's Day, Friday following Thanksgiving