

IOWA DEPARTMENT OF NATURAL RESOURCES

Con 12-1-1
Doc # 19103

APPLIANCE DEMANUFACTURING PERMIT APPLICATION

NOTE: Completion of this form requires reference to Iowa Administrative Code 567-118. Please type or print in ink. Complete each item in its entirety.	
SEND TO: APPLIANCE DEMANUFACTURING PERMITS ENERGY AND WASTE MANAGEMENT BUREAU DEPARTMENT OF NATURAL RESOURCES WALLACE BUILDING 502 E. 9 th STREET DES MOINES, IA 50319	

FACILITY APPLYING		
Name <i>Dovel</i>		
LOCATION OF FACILITY		
Address <i>1006 1/2 N 4th St.</i>		County <i>Montgomery</i>
City <i>Red Oak</i>	State <i>IA</i>	Zip <i>51566</i>
MAILING ADDRESS IF DIFFERENT FROM ABOVE		
Address <i>1006 1/2 N. 4th St</i>		
City <i>Red Oak</i>	State <i>IA</i>	Zip <i>51566</i>
CONTACT PERSON OR OFFICIAL RESPONSIBLE FOR OPERATION OF THE FACILITY		
Name <i>Thomas Dovel</i>		Title <i>Owner</i>
Phone <i>402 290 7961</i>		e-mail (optional)
TYPE, SOURCE, EXPECTED NUMBER OF APPLIANCES TO BE HANDLED PER YEAR		
Type <i>Washer, Dryers microwave, Refrig, Freezers Ranges, water heaters, Dishwashers Air conditioners, furnaces</i>	Source <i>Business + Residential</i>	Number <i>500</i>

Attach all of the following:

- 1) **Schematic site plans** of a fixed facility including the schematic floor plans of any buildings showing where activities will take place and equipment is located. Please note that all demanufacturing facilities must meet local zoning requirements.
- 2) **Operation Plan:** a detailed summary of the activities that will be performed on each type of appliance that would be considered for demanufacturing. This summary must include step by step activities of the demanufacturing process.
- 3) **Contingency plan** detailing specific procedures to be used in case of equipment breakdown or fire, including methods to be used to remove or dispose of accumulated waste.

6957 PM 12:56 12/20/04

DATE STAMP

- 4) **EPA notification of PCB activity form 7710-53.** Facilities with a PCB storage area need to register with form 7710-53. Attach a copy of the form and send the original to the address on the form. This form may be obtained at <http://www.epa.gov/pcb/data.html> or by writing to: US Environmental Protection Agency, EPA West Building, National Program Chemicals Division, 1200 Pennsylvania Avenue NW, Mail Code 7404T, Washington, D.C. 20460. For assistance contact David Phillippi at 913/551-7395.
- 5) **Unique marking system** to be applied to each appliance after being demanufactured. The mark must be a minimum of nine inches by nine inches.

For each of the following, check one box and provide attachments as needed;

6) Mobile operations

Attach schematic plans, or description and photographs of the mobile van or trailer.

OR

I will not use a mobile operation to demanufacture appliances

7) Refrigerant

Attach a copy of EPA Refrigerant Recovery or Recycling Device Acquisition Certification Form certifying that the disposer has acquired and is using EPA approved equipment. For assistance contact Alice Law at 913/551-7623.

OR

I do not wish to demanufacture appliances containing refrigerant.

8) Storm Water Permit (for more information on Storm Water Permits contact Joe Griffin at 515/281-7017)

Attach a copy of the "Authorization to Discharge" (Stormwater) Permit.

OR

I have spoken to DNR wastewater staff and they have confirmed that the facility does not require a storm water permit.

9) Training

Attach documentation that at least one owner or full time employee has received DNR approved training

OR

At least one owner or full time employee will attend the next available training

Thomas Douel

Signature

12/13/04

Date

Dovel Demanufacturing
Contact Phone Numbers

Tom Dovel

Cell phone 402-290-7961
Home phone 402-345-1205
Work phone 402-573-2026 ←
Pager # 800-724-3624
Pin# 1727150

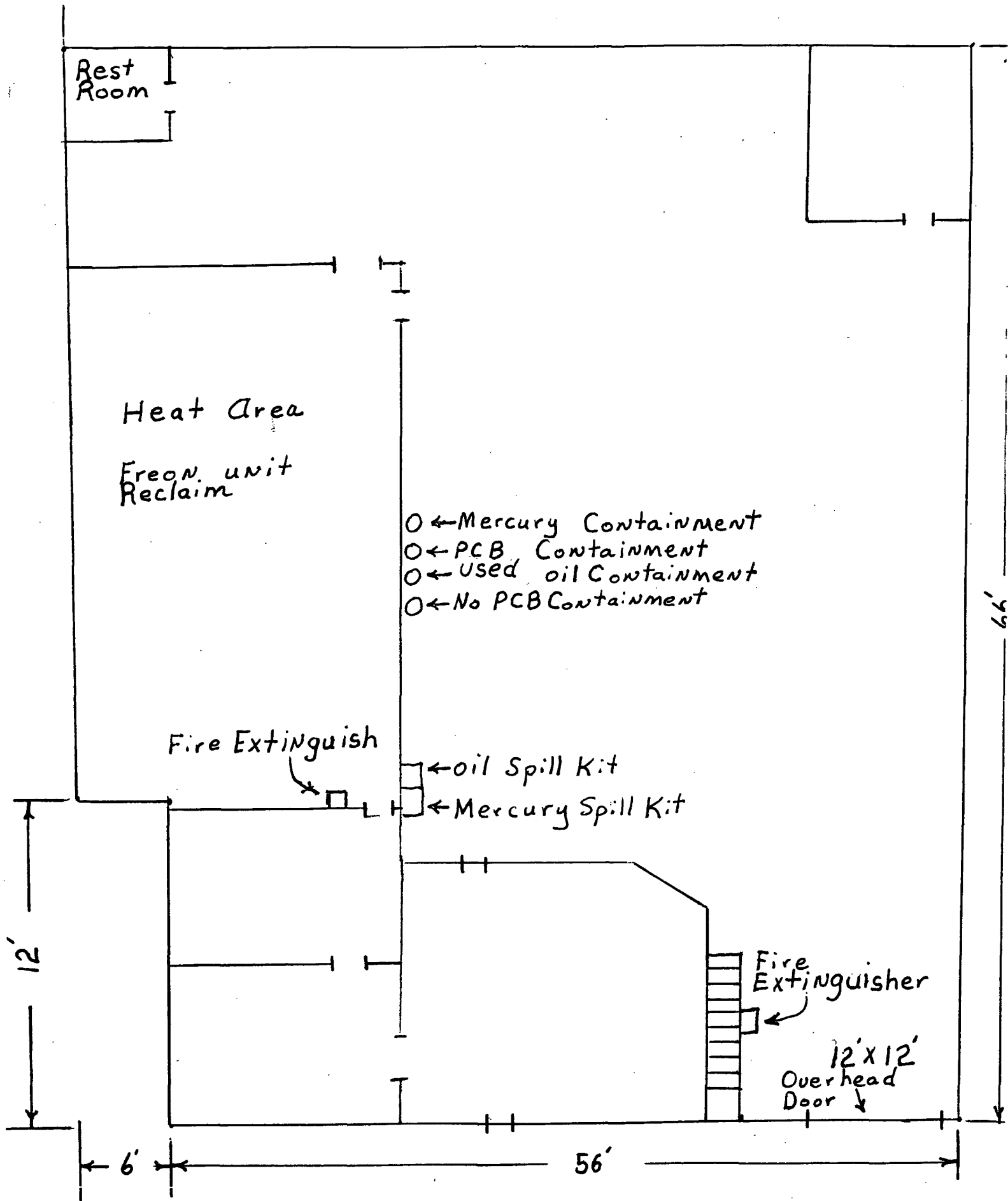
Eric Dovel

Cell phone 402-740-7439

Kimber Dovel

Cell phone 402-290-7895

DOVEL DEMANUFACTURING SITE



Operation Plan for Dovel Demanufacturing

A. Clothing Washers

- a. Washing machines will be checked for capacitors containing PCB's. If the machine contains capacitors they will be removed and properly disposed of. Capacitors will be removed in tacked and stored in an approved DOT container to contain any possible leaks. Two inches of absorbent will be put on the bottom of the DOT container to absorb any leaks.
- b. Machine will be checked for a mercury (Hg) shut-off switch on the lid and Hg off-balance switch. If the machine contains Hg it will be removed and be properly disposed of. Mercury switches will be removed in tacked and stored in an approved DOT container with two inches of absorbent to contain any possible leaks.
- c. This machine is read of the facility's unique demanufacturer's mark which is an Orange circle with a letter in the center of it. The Mark will be a minimum of nine square inches and each appliance will have two of its sides marked.
- d. To identify Hg lid switch first open the lid and look to see if a plunger device is used. If a plunger is present, an electrical switch was used instead of a mercury switch. If there is no plunger, an Hg switch may be present. If an Hg switch is suspected, remove the lid of the washer. The switch will be located on the underside of the lid, look for wires connecting to a device on underside of the lid. Remove the device and cut any wires.
- e. To determine if an Hg off-balance switch exists look on the back of the washing machine for springs or pulley type system. This would indicate that no Hg switch is present. If it appears there is no counter balance system, locate the off balance switch to see if it is Hg containing. To identify an off-balance switch, look for wires that lead to a device attached usually to the backside of the washer. Remove the switch and manually inspect for the present of Hg. Typically, the Hg will be visible.

B. Microwave Ovens

- a. Microwave ovens will be checked for capacitors containing PCBs. At this time all machine will have the cover removed and check for capacitors.
- b. All capacitors will be removed in tacked and stored in approved DOT containers with two inches of absorbent on the bottom to contain any possible leaks.
- c. Remove the outside cover. The capacitor is typically located near the control panel of the microwave. Discharge the capacitor before removal by placing an insulated screwdriver across the leads of the capacitor and touch the metal surface of the microwave. Unscrew the clamp holding the capacitor in place. Cut or remove the wires connected to the capacitor. If the capacitor has no label or the label is unreadable, assume it to contain

PCB. If the label is present, look for the "No PCB's" on the label. If the term is not on the label, treat the capacitor as PCB containing. Mark the appliance with the facility's unique demanufacturer mark.

C. Refrigerators and Freezers

- a. Personnel will remove refrigerants using EPA-approved equipment and procedures.
- b. Refrigerants will be stored in EPA-approved containers until full then shipped to a recycling center.
- c. In refrigerators find the capacitor which can be found attached to the compressor. Discharge the capacitor before removal by placing an insulated screwdriver across the leads of the capacitor and touching a metal surface of the refrigerator. Unscrew the clamp holding the capacitor in place. Cut or remove the lines connected to the capacitor. If the capacitor has no label or the label is unreadable, assume it to contain PCB. If the label is present, look for the term "NO PCBs" on the label. If the term is not on the Label, treat the capacitor as PCB containing.
- d. Freezers may contain lights that have in line mercury switches. If a freezer has a plunger device, no mercury switch is present. If there is no plunger device, locate the light and remove the bulb. Remove the switch and cut or disconnect the wires.
- e. Evacuating Refrigerants in Refrigerators and Freezers will be the same for both. Locate either a low or high-pressure line to tap. The type of line depends on the recovery unit you are using. Place a piercing tool the line. Connect a hose to the piercing tool. Once the hose is securely attached to the piercing tool, pierce the line. Open valves and begin the extraction process. Based on the system used, close the valve every few minutes and allow the system to recharge. During this time, a hammer could be used to free trapped Freon in the oil by tapping the compressor unit. The evacuation process is complete once the gauge maintains a level of 4 inches negative of mercury vacuum. Remove hose and piercing tool. Mark the appliance with the facility's unique demanufacturer mark.

D. Kitchen Electric Ranges

- a. Electric ranges will be checked for fluorescent lamps. If so equipped, lamp will be removed and properly disposed of.
- b. Lamps will be put in a container to contain any possible leaks and to reduce breakage.
- c. Mark the appliance with the facility's unique demanufacturer's mark.

E. Water Heaters

- a. Water heaters will be checked for mercury in the safety flame sensors.
- b. Mercury switches and thermocouples will be removed in tacked and stored in an approved DOT container with two inches of absorbent to contain any possible leaks.

- c. Use magnets to detect Hg-containing thermocouples. If an electronic flame sensor were located on the appliance, a thermocouple would be present.

F. Thermostats

- a. Mercury containing thermostats will be shipped in tacked to a mercury thermostat recycler.

G. Clothes Dryers and Dishwashers

- a. Machine will be checked for capacitors containing PCB's. If found they will be removed and properly disposed of.
- b. Capacitors will be stored in a DOT approved container with 2 inches of absorbent in the bottom to contain any possible leaks until shipped to a vender that handles toxic substance.
- c. Mark appliance with the facility's unique demanufacturer mark.

H. Gas Ranges (Stoves)

- a. Gas Ranges may contain several temperature probes. Probes may contain Hg. Probes attracted to a magnet are a good indication the probe contains Hg; probes not attracted to a magnet are a good indication the probe does not contain Hg.
- b. Remove the stove cover and locate the gas control device. Test the thermocouple leaving the device with a magnet. If the thermocouple sticks to the magnet it is Hg containing and the thermocouple must be removed. If the line does not stick, follow the line to the end and perform the same test. Another thermocouple could be located in the oven/broiler area of the gas range. Locate it, perform the same magnet test, and remove if necessary. Mark the appliance with the facility's unique demanufacturer's mark.

I. Furnaces

- a. Remove the back cover or the shell to allow access to the blower/fan and the gas valve. Locate the gas control valve and look for the heat probe that will be leaving the unit. Test for the presence of Hg by performing the magnet test. Using the magnet, test the probe (line), if the line sticks to the magnet, it is Hg containing and thermocouple must be removed. If the line does not stick, follow the line to the end and perform the same test, remove if it sticks to the magnet and treat as Hg containing. Non-magnetic lines indicate no mercury present.
- b. Next look for the blower/fan to find the capacitor. Discharge the capacitor before removal by placing an insulated screwdriver across the leads of the capacitor and touching a metal surface of the unit. Unscrew the clamp holding the capacitor in place. Cut or remove the wires connected to the capacitor. If the capacitor has no label or the label is unreadable, assume it to contain PCBs. If the label is present, look for the term "NO PCB's" on the label. If the term is not on the label, treat the capacitor as PCB

containing. Mark the appliance with the facility's unique demanufacturer mark.

J. Air Conditioners and all units that contain refrigerants (Not Ammonia or Sodium chromate Containing)

- a. Locate either a low or high-pressure line to tap. The type of line depends on the recovery unit you are using. Place a piercing tool the line. Connect a hose to the piercing tool. Once the hose is securely attached to the piercing tool, pierce the line. Open valves and begin the extraction process. Based on the system used, close the valve every few minutes and allow the system to recharge. During this time, a hammer could be used to free trapped Freon in the oil by tapping the compressor unit. The evacuation process is complete once the gauge maintains a level of negative 4 inches of mercury vacuum. Remove hose and piercing tool.
- b. After the refrigerant is removed there can be more than two capacitors on the air conditioner. Capacitors are found on the control panel and on the blower. Remove the control panel. Locate the capacitor and discharge the capacitor before removal by placing an insulated screwdriver across the leads and touching a metal surface of the air conditioner. Unscrew the clamp holding the capacitor in place. Cut or remove the wires connected to the capacitor. If the capacitor has no label or the label is unreadable, assume it to contain PCB. If the label is present, look for the term "No PCBs" on the label. If the term is not on the label, treat the capacitor as PCB containing. Next locate the fan, check to see if a start capacitor is located on the fan or near the fan. Discharge the capacitor before removal by placing an insulated screwdriver across the leads and touching a metal surface of the unit. Cut or remove the wires connected to the capacitor. If the capacitor has no label or the label is unreadable, assume it to contain PCBs. If the label is present, look for the term "No PCBs" on the label. If the term is not on the label, treat the capacitor as PCB containing.
- c. Mark the appliance with the facility's unique demanufacturer mark.

K. Disposal Methods

- a. Refrigerant (R12, R22, R134a) will be shipped to a vender that handles refrigerant recycling and disposal.
- b. PCB,s will be shipped to a vender that handles toxic substance.
- c. Mercury will be shipped to a vender that handles mercury.
- d. Discarded appliances containing Ammonia will be shipped to another permitted discarded appliance demanufacturer.
- e. Discarded appliances containing Sodium Chromate will be shipped to another permitted discarded appliance demanufacturer.

CONTINGENCY PLAN for DOVEL DEMANUFACTURING

Mechanical Breakdown

For minor equipment breakdowns, equipment will be repaired as soon as possible. If equipment cannot be repaired within a certain time frame appliances demanufacturing will be discarded/recycled through the proper disposal vendors.

Appliances not demanufactured will be taken to a DNR-permitted discarded appliance demanufacturing facility.

Workplace Fire Hazards

A company designee will identify all major workplace fire hazards, inform personnel regarding these hazards and establish procedures for the proper handling, safe storage and availability of equipment to control these fire hazards. Additionally, any heat producing equipment such as burners, boilers, ovens, stoves etc. will be maintained and kept clean of accumulation of flammable residues. Flammables or combustibles are not to be stored near any heat-producing equipment.

A company designee shall be responsible for the maintenance of equipment/systems that have been installed to control ignitions or fires and fuel source hazards. Records shall be maintained regarding these maintenance activities.

Portable Fire Extinguishers

This facility will be equipped with an appropriate number of approved fire extinguishers that are strategically located throughout the facility. Each extinguisher will be appropriately identified, maintained and inspected. All fire extinguishers will be inspected annually by a qualified fire extinguisher inspection service.

Personnel expected or anticipated to use fire extinguishers will be instructed on the hazards of fighting fire, how to properly operate the fire extinguisher available, and what procedures to follow in alerting others to the fire emergency.

Fire Incidents

For any fire that can be acted upon and controlled with a fire extinguisher, it is appropriate for any employee who has been trained in fire extinguisher use to put out the fire. Should the fire be of the magnitude that will place any employee in a safety risk situation, procedures will be initiated to evacuate the facility.

Housekeeping

The practice of this facility shall be to control accumulation of flammable and combustible waste materials and residues so that they do not contribute to a fire

emergency. Any flammable or combustible liquids shall be stored in an approved container and storage cabinet. The housekeeping procedures shall be monitored regularly by department head/supervisor and reviewed with personnel as frequently as needed.

Spills

Employees are instructed to refer to the chemical product label and the MSDS for proper clean up should a chemical be spilled. Appropriate personal protective equipment must be worn when cleaning up spills and materials disposed of in accordance with MSDS information.

1. The appropriate employee will be designated to deal with any hazardous material spills.
2. Mercury Spill Kit will be on hand and used in the event of a mercury spill. (Any waste from the cleanup of a mercury spill will be disposed of as a hazardous waste.)
3. Spill from leaking capacitors will be handled by placing the capacitor, and any contaminated rags, clothing and soil into a container for shipment to an EPA-permitted waste disposal facility.
4. In the event a spill results in a hazardous condition, the **Iowa Department of Natural Resources** will be notified at **(515) 281-8694**. The local police department or sheriff's office will also be notified. All agencies will be notified no later than six hours after the onset or discovery of a spill.
5. Spills that may endanger employees will be referred the local HazMat team.



UNITED STATES ENVIRONMENTAL PROTECTION AGENCY
WASHINGTON, D.C. 20460

Thomas Dovel
Thomas Dovel
1335 S. 35 Ave.
Omaha, NE 68105

OFFICE OF
PREVENTION, PESTICIDES AND
TOXIC SUBSTANCES

(7404)
November 22, 2004
7395

Subject: Notification of PCB Activity

Thank you for filing the Notification of PCB Activity form dated October 12, 2004 for the facility location listed below:

Dovel
10061/2 4th Street
Red Oak, IA 51566-

The Fibers and Organics Branch (FOB) of EPA's Office of Pollution Prevention and Toxics is issuing the following TSCA identification number to the above listed facility: IAW000000423. This number may only be used for PCB-related activities and may not be used for any other regulated hazardous waste activities.

If you have also applied for a Regulation (Hazardous) Waste EPA ID number under RCRA, you may request a consolidation of your RCRA identification number and TSCA identification number upon receipt of your RCRA EPA ID number. To do so, FOB would require confirmation of the RCRA identification number that has been assigned to your facility. A copy of the RCRA ID Assignment Form (8700-12A(6-90)) for your facility would be an example of acceptable documentation.

Please direct all questions and requests for consolidation to Robert Courtnage at (202) 566-1081.

Sincerely,

A handwritten signature in black ink that reads "Tony Baney".

• Tony Baney, Chief
Fibers & Organics Branch

Dovel Demanufacturing
Unique Mark

It is a “D” circled in orange marking paint.

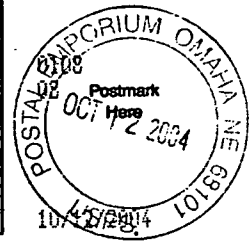
7004 0750 0000 3836 4689

U.S. Postal Service™
CERTIFIED MAIL™ RECEIPT
(Domestic Mail Only; No Insurance Coverage Provided)

For delivery information visit our website at www.usps.com

OFFICIAL USE

Postage	\$ 10.37
Certified Fee	\$ 2.30
Return Receipt Fee (Endorsement Required)	\$ 1.75
Restricted Delivery Fee (Endorsement Required)	\$ 0.00
Total Postage & Fees	\$ 14.42



Sent To **EPA Region VII**
 Street, Apt. No. or PO Box No. **901 North Fifth Street**
 City, State, ZIP+4 **KANSAS CITY, KS 66101**
 PS Form 3800, June 2002 See Reverse for Instructions

SENDER: COMPLETE THIS SECTION

- Complete items 1, 2, and 3. Also complete item 4 if Restricted Delivery is desired.
- Print your name and address on the reverse so that we can return the card to you.
- Attach this card to the back of the mailpiece, or on the front if space permits.

1. Article Addressed to:
EPA Region VII
901 North Fifth Str.
Kansas City, KS
66101

COMPLETE THIS SECTION ON DELIVERY

A. Signature **EPA/CASU** Agent
X MAILROOM Addressee

B. Received by (Printed Name) _____ C. Date of Delivery **OCT 14 2004**

D. Is delivery address different from item 1? Yes
 If YES, enter delivery address below: No

3. Service Type
 Certified Mail Express Mail
 Registered Return Receipt for Merchandise
 Insured Mail C.O.D.

4. Restricted Delivery? (Extra Fee) Yes

7004 0750 0000 3836 4689

for Refrigerant form

**THE UNITED STATES ENVIRONMENTAL PROTECTION AGENCY (EPA)
REFRIGERANT RECOVERY OR RECYCLING DEVICE
ACQUISITION CERTIFICATION FORM**

EPA regulations require establishments that service or dispose of refrigeration or air-conditioning equipment to certify by August 12, 1993 that they have acquired recovery or recycling devices that meet EPA standards for such devices. To certify that you have acquired equipment, please complete this form according to the instructions and mail it to the appropriate EPA Regional Office. BOTH THE INSTRUCTIONS AND MAILING ADDRESSES CAN BE FOUND ON THE REVERSE SIDE OF THIS FORM.

PART 1: ESTABLISHMENT INFORMATION

Name of Establishment Dovel	Street 1006 1/2 4th Street
(Area Code) Telephone Number 402 290 7961	City State Zip Code Red Oak IA 51566
Number of Service Vehicles Based at Establishment 1	County Montgomery

PART 2: REGULATORY CLASSIFICATION

Identify the type of work performed by the establishment. Check all boxes that apply.

- Type A - Service small appliances
- Type B - Service refrigeration or air-conditioning equipment other than small appliances
- Type C - Dispose of small appliances
- Type D - Dispose of refrigeration or air-conditioning equipment other than small appliances

PART 3: DEVICE IDENTIFICATION

	Name of Device(s) Manufacturer	Model Number	Year	Serial Number (if any)	Check Box if Self-Contained
1.	Robinair	25200A	97	761	<input checked="" type="checkbox"/>
2.					<input type="checkbox"/>
3.					<input type="checkbox"/>
4.					<input type="checkbox"/>
5.					<input type="checkbox"/>

PART 4: CERTIFICATION SIGNATURE

I certify that the establishment in Part 1 has acquired the refrigerant recovery or recycling device(s) listed in Part 2, that the establishment is complying with Section 608 regulations, and that the information given is true and correct.

Signature of Owner/Responsible Officer Thomas Dovel	Date 10/12/04	Name (Please Print) Thomas Dovel	Title owner
---	-------------------------	--	-----------------------

From: Joe Griffin
To: Tom Dovel
Date: 12/9/2004 3:44:26 PM
Subject: RE: Storm Water Permits

→ Yes, my interpretation of the rules is that, in the situation you described, at storm water permit would not be needed.

>>> Tom Dovel <tom.dovel@mci.com> 12/09/04 03:13PM >>>

Joe,

Per our conversation 12/9/04 I do not require a Storm Water Permit because all my work is done on the inside of the building.

Loading and unloading was the real question and due to the water tightness of the trailer and that loading was going to occur with the back of the trailer in the building that again I would not need a storm water permit.

Please let me know if you feel that this interpretation of our conversation is correct so I can forward to Jim Thayer so that he can further process my ADPA permit.

Thanks,

Tom

(402) 290-7961

CC: Jim Thayer

Certificate of Completion

presented to

Thomas Dovel

*For successful completion of the IDNR approved Appliance
Demanufacturing Training Course conducted
by Barker Lemar on this day, November 18, 2004,
at the Barker Lemar facilities in West Des Moines, Iowa.*



Matt Nieswender
Senior Project Manager/Lead Trainer



Timothy C. Buelow
Principal Engineer

BARKERLEMAR
ENGINEERING CONSULTANTS

The City of
Red Oak
601 N. Sixth Street
Red Oak, IA
51566
712-623-6510
redoakcity@mchsi.com



Brad Wright
City Administrator
601 N. Sixth Street
Red Oak, IA
51566
712-623-6520
redoakadmin@mchsi.com

September 9, 2004

Mr. Tom Dovel
111 W. Walnut
Red Oak, IA 51566

RE: Appliance Demanufacturing
1006 ½ N. 4th Street, Red Oak

Dear Mr. Dovel:

The Red Oak Board of Adjustment has approved your request to do Appliance Demanufacturing at the above referenced location. The only conditions of that approval is that there will be no outside storage of appliances or materials, and that this location will not be used as a public drop-off location for appliances.

A copy of the minutes of the Board of Adjustment meeting at which your request was approved is enclosed for your records.

If you have any questions or need anything further from the City, please do not hesitate to contact me.

Sincerely,

Brad Wright
City Administrator

MINUTES
RED OAK BOARD OF ADJUSTMENT
7:45 A.M. SEPTEMBER 9, 2004
RED OAK CITY HALL

The Red Oak Board of Adjustment met at 7:45 A.M. on September 9, 2004 at Red Oak City Hall with the following members present: Dick Bulkeley, Jon Wilson, Darrell Carlson. Absent: Don Tresemer, Henry Elliot. Also present were City Administrator Brad Wright, Tom Dovel, John Dovel, Chris Dovel.

Dick Bulkely called the meeting to order. Minutes of the April 23, 2004 meeting had been sent to the Board. A motion was made by Jon Wilson and seconded by Darrell Carlson to approve the minutes as sent.

Ayes: Bulkeley, Wilson, Carlson
Nays: None.
Motion Carried.

Property located at 1006 ½ N. 4th Street is currently used for sheet metal and commercial refrigeration repair shop. This is a nonconforming use, as the property is zoned "R-2" Residential. Tom Dovel is requesting approval to use this property for Appliance Demanufacturing. The Board must determine if this is equally appropriate or more appropriate to the district than the existing nonconforming use.

Following discussion with the Dovels, a motion was made by Jon Wilson and seconded by Darrell Carlson to approve the change of use for 1006 ½ N. 4th Street to be used for Appliance Demanufacturing, subject to the conditions that there will be no outside storage of appliances or materials, and that this will not be used as a public drop off location.

Ayes: Bulkeley, Wilson, Carlson
Nays: None.
Motion Carried.

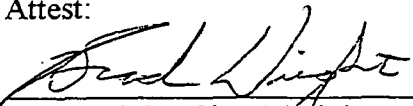
There being no further business, the meeting was adjourned.

Signed:



Dick Bulkeley, Chairman

Attest:



Brad Wright, City Administrator

Dovel Demanufacturing
1006 1/2 N. 4th Street
Red Oak, IA 51566

Date: 1/24/2005

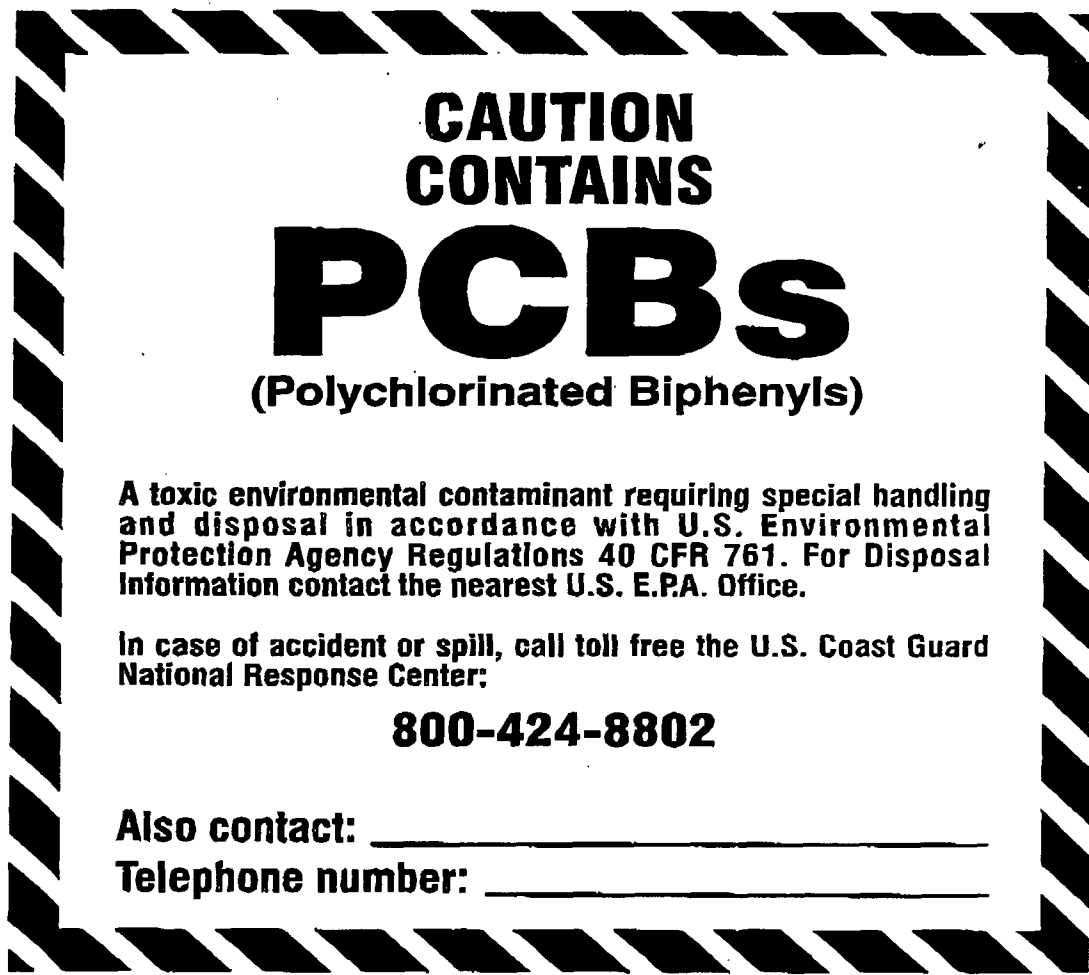
Kirk,

Here are the labels from Lab Safety Supply Inc. that go on the two storage containers.

Thanks,
Tom Dovel

Fax To : 712-243-6251
515-281-8895

3 pages total



**CAUTION
CONTAINS
PCBs**
(Polychlorinated Biphenyls)

A toxic environmental contaminant requiring special handling and disposal in accordance with U.S. Environmental Protection Agency Regulations 40 CFR 761. For Disposal Information contact the nearest U.S. E.P.A. Office.

In case of accident or spill, call toll free the U.S. Coast Guard National Response Center:

800-424-8802

Also contact: _____
Telephone number: _____

Lab Safety Supply Inc.

Reorder No. G98

HAZARDOUS WASTE

FEDERAL LAW PROHIBITS IMPROPER DISPOSAL.

IF FOUND, CONTACT THE NEAREST POLICE OR PUBLIC SAFETY AUTHORITY OR THE U.S. ENVIRONMENTAL PROTECTION AGENCY.

GENERATOR INFORMATION:

NAME _____

ADDRESS _____ PHONE _____

CITY _____ STATE _____ ZIP _____

EPA ID NO. / MANIFEST DOCUMENT NO. _____ / _____

ACCUMULATION START DATE _____ EPA WASTE NO. _____

D.O.T. PROPER SHIPPING NAME AND UN OR NA NO. WITH PREFIX

HANDLE WITH CARE!

STYLE WM8

LABELMASTER® (800) 621-5808 www.labelmaster.com

Unique demanufacturer's mark
for Dovel



Ⓚ