

January 31, 2025  
File No. 27224317.25

Mr. Mike Smith, P.E.  
Iowa Department of Natural Resources  
Land Quality Bureau  
6200 Park Avenue  
Des Moines, Iowa 50321

Subject: 2024 Landfill Gas Annual Report  
Great River Regional Waste Authority Sanitary Landfill  
Phase 1 MSWLF Unit  
Permit No. 56-SDP-07-80P

Dear Mike:

SCS Engineers, on behalf of the Great River Regional Waste Authority (GRRWA), is submitting the results of the 2024 and fourth quarter of 2023 landfill gas monitoring as required by 1989 Iowa Administrative Code 567-103.2(15) for the closed Phase 1 municipal solid waste landfill unit at the GRRWA Sanitary Landfill. Gas monitoring of the subsurface and structure monitoring points was performed quarterly by facility staff. Attached is Figure 1 (Methane Monitoring Network) and a summary of methane monitoring results.

No measured gas concentrations exceeded the regulatory action levels contained in the above-referenced code.

If you have any questions regarding this report, please contact Nathan Ohrt at (319) 331-9613.

Sincerely,



Nathan Ohrt  
Senior Project Professional  
SCS Engineers



Timothy C. Buelow, P.E.  
Senior Project Advisor  
SCS Engineers

NPO/TCB

Copies: Austin Banks, Great River Regional Waste Authority



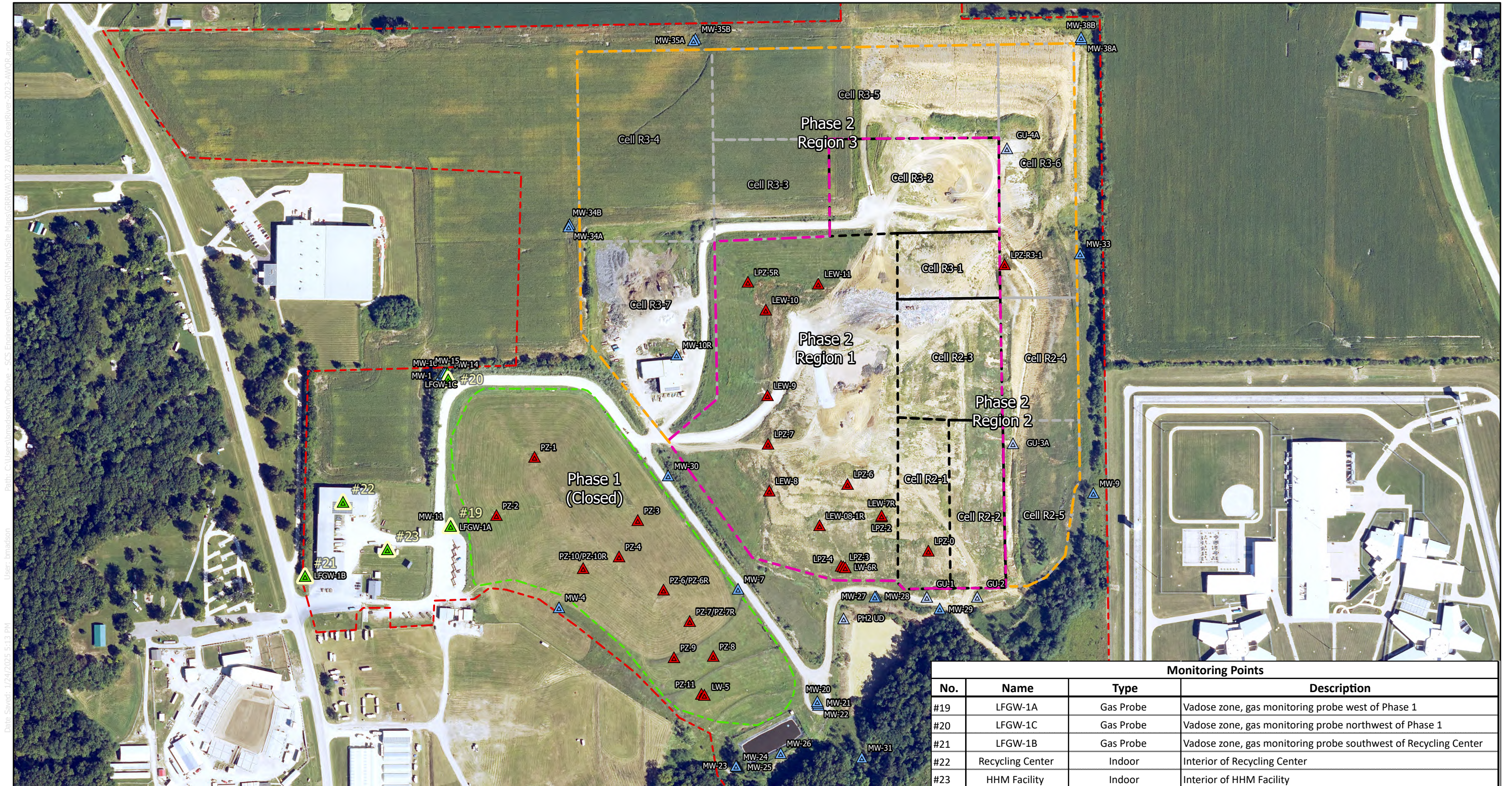
**2024 Landfill Gas Annual Report**  
**GRRWA Sanitary Landfill**  
**Phase 1 MSWLF Unit**  
**Permit No. 56-SDP-07-80P**

Point #	Monitoring Points			Methane Results (% LEL)									
	Name	Type	Description	12/21/2023	S	3/28/2024	S	6/28/2024	S	9/27/2024	S	12/23/2024	S
19	LFGW-1A	Gas Probe	Vadose zone west of Phase 1	0	N	0	N	0	N	0	N	0	N
20	LFGW-1C	Gas Probe	Vadose zone, NW of Phase 1	0	N	0	N	0	N	0	N	0	N
21	LFGW-1B	Gas Probe	Vadose zone, SW of Recycling Center	NM		NM		NM		NM		NM	
22	Recycling Center	Indoor	Interior of Recycling Center	0		0		0		0		0	
23	HHM Facility	Indoor	Interior of HHM Facility	0		0		0		0		0	

S - Was screen submerged, yes or no or blank is non-applicable

NM - Not measured. Monitoring point LFGW-1B is only measured when methane is detected at monitoring point LFGW-1A to provide monitoring at the facility boundary.

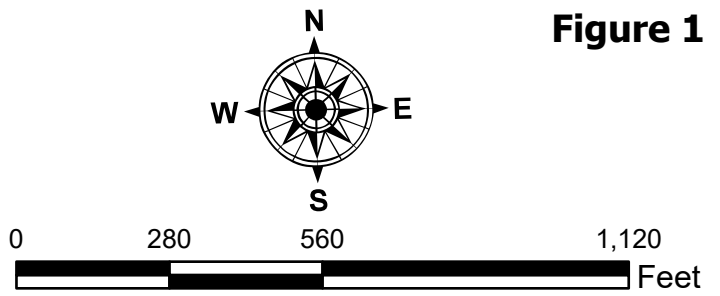




# Methane Monitoring Network

- Legend**
- ▲ Methane Monitoring Point
  - ▲ Monitoring Well
  - ▲ Underdrain Monitoring Point
  - ▲ Landfill Gas Well
  - ▲ Leachate Monitoring Point
  - Approximate Future Waste Boundary - Phase 2
  - Approximate Waste Boundary - Phase 2
  - Located Waste Boundary
  - Approximate GRRWA Property Boundary
  - Approximate Location Of Existing Cell Boundaries
  - Approximate Location of Future Cell Boundary

GRRWA Sanitary Landfill  
 Phase 2  
 Fort Madison, Iowa  
 Project No: 27224317.25  
 Drawing Date: January 2025



**Figure 1**