



Jolly, Becky &lt;becky.jolly@dnr.iowa.gov&gt;

---

**RE: Ottumwa-Midland CCR Landfill - Permit No. 90-SDP-08-92P: Recommended Assessment Steps**

1 message

**Coughlin, Jenny** <JennyCoughlin@alliantenergy.com>

Tue, May 21, 2024 at 8:08 AM

To: "Rath, Brian" &lt;brian.rath@dnr.iowa.gov&gt;

Cc: mblodgett &lt;mblodgett@scsengineers.com&gt;, "Karwoski, Thomas" &lt;tkarwoski@scsengineers.com&gt;, "Levetzow, Kurt" &lt;kurt.levetzow@dnr.iowa.gov&gt;, "Jolly, Becky [DNR]" &lt;becky.jolly@dnr.iowa.gov&gt;, "Maxted, Jeffrey" &lt;JeffreyMaxted@alliantenergy.com&gt;, "Bizjack, Matthew" &lt;MatthewBizjack@alliantenergy.com&gt;

Hi Brian,

As noted in the department's October 31, 2023 response to Alliant Energy's recommended assessment steps at Ottumwa-Midland Landfill (OML), Alliant Energy has evaluated future expansion at OML and determined the temporary contact water basin will need to remain for operation of Phase 2, anticipated to be constructed north of Phase 1. In our correspondence last fall, you indicated that you felt there needed to be an additional monitoring well on the south side of the temporary contact water basin, within 50 feet from the basin, and directed me to Iowa Administrative Code 567—103.1.(4)c. After further evaluation, we foresee a few logistical challenges with placing a well in this location, including:

1. Several subsurface utilities
2. Significant topography and potential pad construction required
3. Location within approved future expansion disposal limits

I have attached the site plan, excerpted from the most recently submitted AWQR, for your reference. We will continue evaluate the location given these logistical challenges, and will work to have a mutually agreed-upon location selected and monitoring well installed at the nearest reasonable downgradient location, outside the approved future waste limits, by December 31, 2024.

Please call me if you have any questions.

Thanks,

-Jenny C.

**Jenny Coughlin | Sr. Environmental Specialist**

Pronouns: she/her/hers

**Alliant Energy**

500 East Court Ave. Suite 300 | Des Moines, IA 50309

Office: (515) 558-9704

[alliantenergy.com](http://alliantenergy.com) | [jennycoughlin@alliantenergy.com](mailto:jennycoughlin@alliantenergy.com)

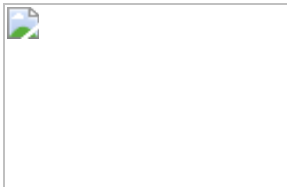
**From:** Rath, Brian <[brian.rath@dnr.iowa.gov](mailto:brian.rath@dnr.iowa.gov)>  
**Sent:** Tuesday, October 31, 2023 2:53 PM  
**To:** Coughlin, Jenny <[JennyCoughlin@alliantenergy.com](mailto:JennyCoughlin@alliantenergy.com)>  
**Cc:** mblodgett <[mblodgett@scsengineers.com](mailto:mblodgett@scsengineers.com)>; Karwoski, Thomas <[tkarwoski@scsengineers.com](mailto:tkarwoski@scsengineers.com)>; Levetzow, Kurt <[kurt.levetzow@dnr.iowa.gov](mailto:kurt.levetzow@dnr.iowa.gov)>; Jolly, Becky [DNR] <[becky.jolly@dnr.iowa.gov](mailto:becky.jolly@dnr.iowa.gov)>  
**Subject:** [EXTERNAL] Ottumwa-Midland CCR Landfill - Permit No. 90-SDP-08-92P: Recommended Assessment Steps

---

Jenny - Please find attached our response letter to your Recommended Assessment Steps. If you have any questions, please let me know.

Thanks,

Brian




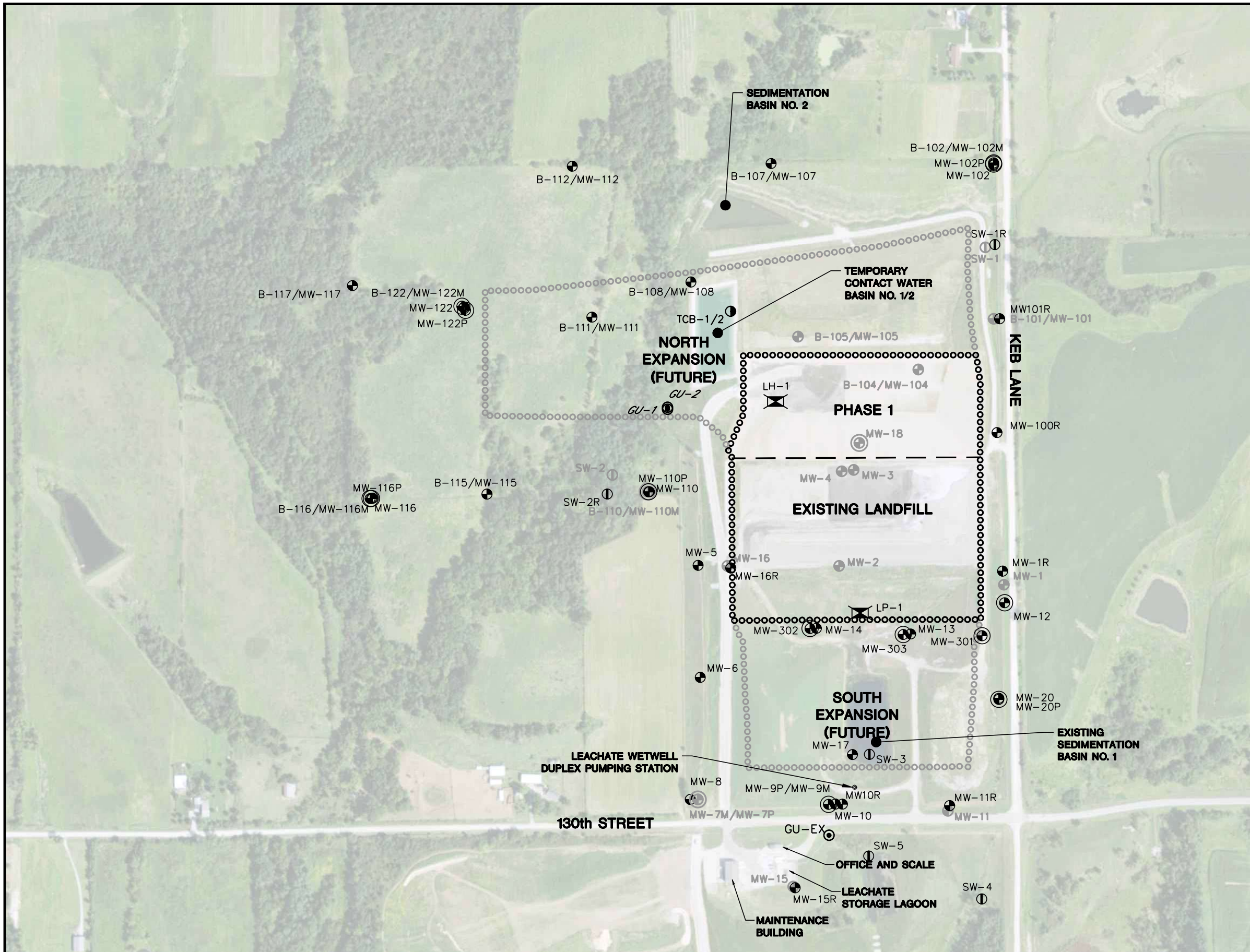
[iowadnr.gov](http://iowadnr.gov)

**BRIAN L. RATH, P.E. | Environmental Engineer Senior**  
Solid Waste and Contaminated Sites Section  
***Iowa Department of Natural Resources***  
**P: 515-537-4051 | F: 515-725-8202**  
[502 E. 9th Street, Des Moines, IA 50319](#)



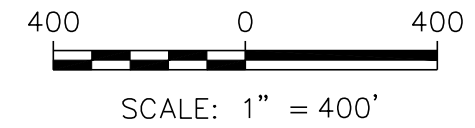
---

 **231130\_OML\_2023 AWQR \_Site Plan.pdf**  
555K



LEGEND	
	APPROXIMATE PROPERTY LINE
	APPROVED WASTE LIMITS
	EXISTING WASTE LIMITS
	PHASE LIMIT
	EXISTING SOIL BORING
	EXISTING MONITORING WELL
	EXISTING PIEZOMETER
	EXISTING SURFACE WATER MONITORING STAFF GAUGE
	ABANDONED MONITORING WELL
	ABANDONED SURFACE WATER MONITORING STAFF GAUGE
	LEACHATE HEADWELL
	GROUNDWATER UNDERDRAIN
	TEMPORARY CONTACT WATER BASIN

- NOTES:
- 2015 AERIAL PHOTOGRAPH IS FROM THE IOWA GEOGRAPHIC MAP SERVER-IOWA STATE UNIVERSITY GEOGRAPHIC INFORMATION SYSTEMS SUPPORT & RESEARCH FACILITY.
  - PROPERTY LINE SOUTH OF 130<sup>TH</sup> STREET FROM SURVEY MAP PREPARED BY GARDEN & ASSOCIATES, OSKALOOSA, IOWA, DATED DECEMBER 20, 1988.
  - PROPERTY LINE NORTH OF 130<sup>TH</sup> STREET FROM PLAT OF SURVEY MAP PREPARED BY SCS ENGINEERS, MADISON, WISCONSIN, DATED FEBRUARY 20, 2013.
  - EXISTING LIMITS OF WASTE ARE APPROXIMATE.



PROJECT NO. 25221073.00	DRAWN BY: AHB/KP	 2830 DAIRY DRIVE MADISON, WI 53718-6751 PHONE: (608) 224-2830	CLIENT INTERSTATE POWER AND LIGHT CO. 15300 130th STREET OTTUMWA, IA 52501	SITE OTTUMWA MIDLAND LANDFILL OTTUMWA, IOWA	SITE PLAN	FIGURE 2
DRAWN: 11/17/2011	CHECKED BY: PEG					
REVISED: 02/16/2021	APPROVED BY: TK, 11/10/2023					
ENGINEER						