

November 13, 2023  
File No. 27223129.24

Mr. Mike Smith, P.E.  
Iowa Department of Natural Resources  
Land Quality Bureau  
Wallace State Office Building  
502 East 9<sup>th</sup> Street  
Des Moines, Iowa 50319-0034

Subject: 2023 Landfill Gas Annual Report  
Great River Regional Waste Authority Sanitary Landfill  
Phase 1 MSWLF Unit  
Permit No. 56-SDP-07-80P

Dear Mike:

SCS Engineers, on behalf of the Great River Regional Waste Authority (GRRWA), is submitting the results of the 2023 landfill gas monitoring as required by 1989 Iowa Administrative Code 567-103.2(15) for the closed Phase 1 municipal solid waste landfill unit at the GRRWA Sanitary Landfill. Gas monitoring of the subsurface and structure monitoring points was performed quarterly by facility staff. Attached is Figure 1 (Methane Monitoring Network) and a summary of methane monitoring results.

No measured gas concentrations exceeded the regulatory action levels contained in the above-referenced code.

If you have any questions regarding this report, please contact Nathan Ohrt at (319) 331-9613.

Sincerely,



Nathan Ohrt  
Senior Project Professional  
SCS Engineers



Timothy C. Buelow, P.E.  
Project Director  
SCS Engineers

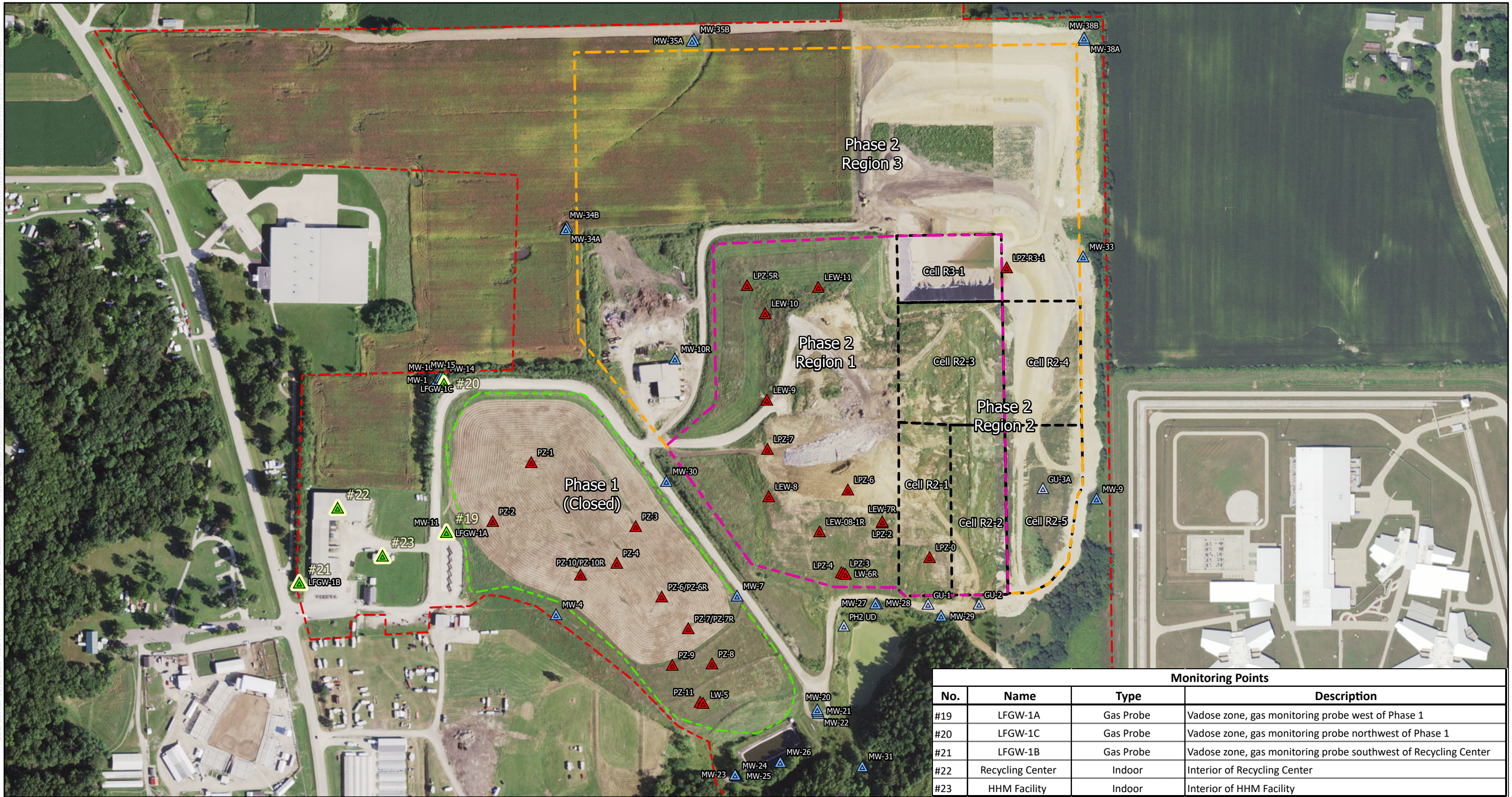
NPO/TCB

Copies: Austin Banks, Great River Regional Waste Authority





Path: C:\Users\hmadison\OneDrive - SCS Engineers\Desktop\GIS Maps\Site Maps\CRBWA\2023 ANWOR\2023 ANWOR.dwg  
User: hmadison  
Date Saved: 11/8/2023 4:57 PM

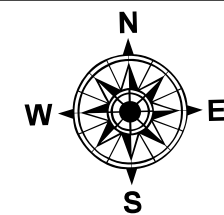


## Methane Monitoring Network

### Legend

- Methane Monitoring Point
- Monitoring Well
- Underdrain Monitoring Point
- Landfill Gas Well
- Leachate Monitoring Point
- Approximate Future Waste Boundary - Phase 2
- Approximate Waste Boundary - Phase 2
- Located Waste Boundary
- Approximate GRRWA Property Boundary
- Approximate Location Of Cell Boundaries

GRRWA Sanitary Landfill  
Phase 1  
Fort Madison, Iowa  
Project No: 27223129.24  
Drawing Date: October 2023



0 280 560 1,120  
Feet

**Figure 1**



**2023 Landfill Gas Annual Report**  
**GRRWA Sanitary Landfill**  
**Phase 1 MSWLF Unit**  
**Permit No. 56-SDP-07-80P**

Monitoring Points				Methane Results (% LEL)					
Point #	Name	Type	Description	3/28/2023	S	6/28/2023	S	9/29/2023	S
19	LFGW-1A	Gas Probe	Vadose zone west of Phase 1	0	N	0	N	0	N
20	LFGW-1C	Gas Probe	Vadose zone, NW of Phase 1	0	N	0	N	0	N
21	LFGW-1B	Gas Probe	Vadose zone, SW of Recycling Center	NM		NM		NM	
22	Recycling Center	Indoor	Interior of Recycling Center	0		0		0	
23	HHM Facility	Indoor	Interior of HHM Facility	0		0		0	

S - Was screen submerged, yes or no or blank is non-applicable

NM - Not measured. Monitoring point LFGW-1B is only measured when methane is detected at monitoring point LFGW-1C to provide monitoring at the facility boundary.

Landfill gas monitoring results for the fourth quarter of 2023 will be included in the 2024 Landfill Gas Annual Report.