



DATE: September 4, 2019

TO: Chamness SDP file

BY: Brian Lee, Environmental Specialist

FACILITY: Chamness SDP (#90-SDP-10-97P)

RE: Follow-up Solid Waste Visit (FOCD #138347)

Kurt Levetzow and I visited Chamness on 9/4/19 to review the status of the compost operation. We met Gary Chamness (owner), Doug McCrea (compliance manager), and Eric Gunsolley (operations employee) on site and we initially discussed the changes and modifications since the last Department inspection. Gary provided some data regarding tonnage hauled in and hauled out over the last few months. He wanted to convey that tonnage in has been reduced over the last few months. He provided an update on the compost turner and the screening and grinder operations. The turner's engine is planned to be overhauled and installed as soon as feasible. Screening has not taken place, but grinding of wood material has continued to the east side of the site. He also indicated that, due to facility staff issues, 35 days of hauling finished material off the pad was lost. His site manager also apparently did not operate the compost operation as desired by Mr. Chamness.

We observed the site with Eric and Doug. According to Gary and Doug, approximately 70% of the pad was covered with cured, unscreened compost. Compost in process covered the remaining area. No compost rows were observed. A new entry area had been created on the north-central side of the site. Mixing of new material was taking place on the north central portion (Picture 1) and northwest corners (Picture 2) of the pad. Some new material appeared to have been added to the east side of the pad as well. Compost and new mixed material was off the pad on the north side and the northwest corner. Some finished, unscreened compost was being hauled. Differentiating between finished compost and the current composting operation material was difficult to determine.



Picture 1. North central pad, looking east.



Picture 2. Northwest corner of the pad, looking east.

The drain from the pad to the southwest lagoon was plugged with compost material (picture 3). Earlier this year, during April/May, the berm had to be cut down to allow the leachate to reach the lagoon. No evidence of leachate discharging around the lagoon was observed. Significant compost material appeared to have reached the lagoon (Picture 4). Cured, screened compost remained off the pad on the southwest portion. Approximately 75 tons remained to be hauled out. No specific storm water controls were observed downslope of the pile. No leachate runoff was observed.



Picture 3. Southwest corner of the pad, looking north. Drain on lower left is covered/plugged with compost.

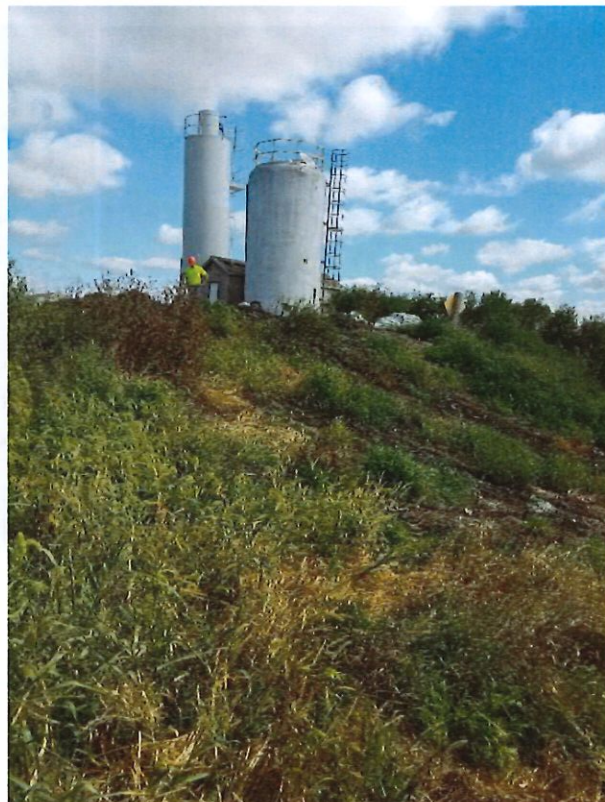


Picture 4. Southwest of pad, looking at the southwest lagoon.

Compost was off the pad on the south-central perimeter (Picture 5). Storm water had accumulated within the compost pile in the middle of the pad. The compost was very wet and had flowed to the east. Lip balm material was stored in barrels and a few had come opened and contents were off the pad. Leachate discharge off the pad was observed at the southeast corner of the pad. Dead vegetation was observed (Picture 6). A small channel had been cut to capture some of the leachate and direct it to the east lagoon. Some leachate appeared to have previously discharged to the southwest, away from the lagoon. Some leachate was pooled in the drainageway that did not lead into the lagoon.

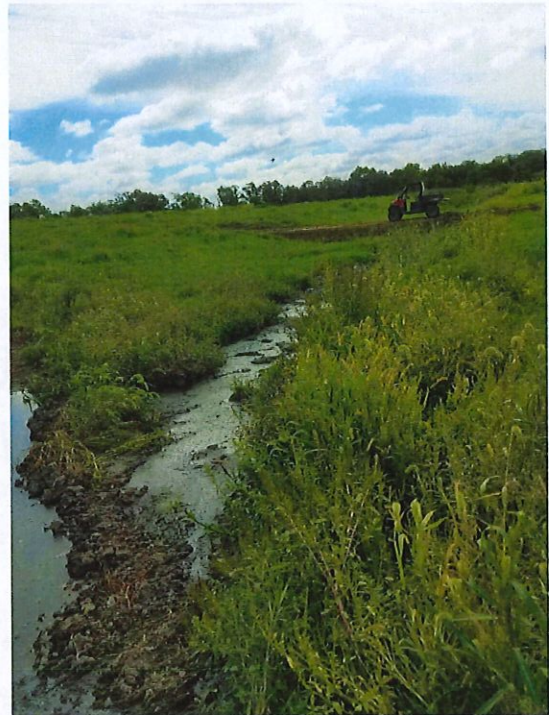


Picture 5. Compost off the south side of the pad, looking west.



Picture 6. Dead vegetation off southeast corner of the pad, looking northeast.

Unscreened, finished compost was being used as fill on the east end, east of the pad. Hay bale and soil berms were in place east of the east lagoon to capture runoff from that area and the east end of the pad (Pictures 7 and 8). Leachate had pooled behind the first soil berm, but had not reached or passed the second berm at the time of our visit. The wood material for grinding is stockpiled east of the main site. Additional finished compost was being used as fill in a small area a few hundred yards east of the main shop, beyond the grinding operation.



Pictures 7 & 8. Hay bale and earth berms are in place downslope of compost fill operation.

Most of the east side of the pad was covered with a soup consisting of compost and storm water (Pictures 9-11). Compost appeared to be off the east end of the pad. The drains in place were not able to function properly. One portion of the drain pipe to the east lagoon had collapsed earlier this year and has not been fixed. Staff must pump the leachate/storm water to the lagoons. Differentiating between finished compost and the current composting operation material was also difficult to determine on the east side of the pad.



Picture 9. Northeast corner of the pad, looking west.



Picture 10. East end of the pad, looking north. Plugged drain is located on the right.



Picture 11. East end of the pad, looking south. This is typically the entry road, just south of the scale. Edge of pad is on left side of picture, running north/south.

We concluded our visit with a discussion with Gary and Doug. We discussed our observations as well as wastewater, storm water, and solid waste permit requirements. Gary indicated he would continue to work towards compliance. He anticipated having the compost all on the pad and in rows before October.