

DEMOLITION KEYNOTES


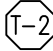

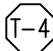
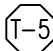
1. DEMOLISH ALL SHINGLES, UNDERLAYMENT, GUTTERS, FASCIA BOARD AND DRIP EDGE ON ROOF.
2. DEMOLISH ALL SKYLIGHTS.
3. DEMOLISH ALL POWER VENTS.
4. DEMOLISH SIDEWALK SITE CONCRETE AS SHOWN.
5. EXISTING CONCRETE TO REMAIN.
6. EXISTING DRINKING FOUNTAIN TO REMAIN.
7. EXISTING LIGHT POLE TO REMAIN, REMOVE LAMP HEADS IN PREP FOR NEW LED LIGHT HEADS.
8. REMOVE INTERIOR BENCHES, PROTECT FOR FUTURE USE.
9. REMOVE TOILET PARTITIONS, PROTECT FOR FUTURE USE.
10. DEMOLISH ALL TOILET AND URINAL FIXTURES.
11. DEMOLISH ALL COUNTER TOPS, SINKS AND TRIM, PREP FOR NEW MATERIAL INSTALL. ANGLED SUPPORTS TO REMAIN.
12. HOT WATER HEATER TO REMAIN.
13. DEMOLISH HAND DRYER.
14. DEMOLISH SHOWER HEAD AND TRIM, PREP FOR NEW MATERIAL INSTALL.
15. REMOVE EXISTING LIGHTING, PREP FOR NEW LIGHTING INSTALL.
16. REMOVE EXISTING RESTROOM ACCESSORIES.
17. REMOVE ALL INTERIOR BUILDING PERIMETER CAULKING AND BACKER ROD.
18. EXISTING PARK BENCH TO REMAIN.

GENERAL NOTES

- A. FIELD VERIFY ALL DIMENSIONS PRIOR TO CONSTRUCTION.
- B. WOOD ROOF DECKING TO BE COB BLASTED AND RECEIVE TWO (2) COATS OF CLEAR GLOSS, UV RESISTANT, POLYURETHANE AFTER INSTALLATION OF NEW TONGUE AND GROOVE.
- C. REFER TO SITE PLAN FOR MORE INFORMATION.
- D. SLOPE ALL CONCRETE TO DRAIN 1% AS SHOWN ON SITE PLAN.
- E. ALL ELECTRICAL TO BE NEC 2012 COMPLIANT.
- F. ALL PLUMBING TO BE IPC 2012 COMPLIANT.
- G. CLEAN ENTIRE BUILDING THOROUGHLY, INTERIOR AND EXTERIOR.

TOILET ACCESSORY SCHEDULE



ALL MODEL NUMBERS BASED ON BOBRICK WASHROOM EQUIPMENT UNLESS OTHERWISE NOTED.

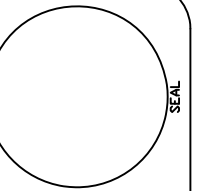
-  SURFACE-MOUNTED MULTI-ROLL TOILET PAPER DISPENSER
B-274
-  TEMPERED GLASS CHANNEL MIRROR
B-1658 2436
-  FIXED POSITION TILT MIRROR
B-293 2436
-  SURFACE MOUNTED SANITARY NAPKIN DISPOSAL
B-254
-  KOALA KARE HORIZONTAL WALL-MOUNTED BABY CHANGING STATION
KB-200 (EARTH 11)

KEYNOTES

1. REMOVE ALL PARTITIONS, REFINISH WITH CATALYZED POLY ACRYLIC AND REHANG WITH EXISTING HARDWARE.
2. EXISTING ROOF LINE ABOVE.
3. CORIAN SOLID SURFACE COUNTER TOP WITH 6" VALENCE AND 4" BACKSPLASH, REUSE EXISTING ANGLE SUPPORTS.
4. ADA WALL-HUNG TOILET - AMERICAN STANDARD, GLENWALL WALL MOUNT.
5. ADA URINAL - AMERICAN STANDARD 0.5 GPF MANUAL WASHBROOK URINAL (6590.501 + ALL COMPONENTS AND TRIM)
6. REMOVE ALL BENCH SEATING AND DIVIDERS, REFINISH WITH CATALYZED POLY ACRYLIC AND REUSE EXISTING ANGLES SUPPORTS.
7. EXISTING BENCH TO REMAIN.
8. EXISTING BLOCK WALL BUILDING.
9. CPC9 EXTREME-AIR AMERICAN HAND DRYER, WHITE.
10. CLEAN INTERIOR WALLS WITH HIGH PRESSURE WATER, PAINT 2X COATS OF BLOCK EPOXY PAINT, COLOR TBD.
11. REPLACE ALL ALUMINUM LOUVERS ABOVE SHOWER AREAS.
12. EXISTING DRINKING FOUNTAIN TO REMAIN.
13. S-5! COLOR GARD SNOW BAR ACROSS BOTH EAVES OF ROOF.
14. EXISTING UTILITY SINK TO REMAIN.
15. FIRESTONE UC-14 STEEL ROOFING, 18" O.C. RIBS WITH STRIATIONS, OVER WATER AND ICE SHIELD ENTIRE ROOF.. INFILL SKYLIGHT HOLES WITH SHEATHING AND ROOF OVER. NEW CONTINUOUS PERIMETER DRIP EDGE ENTIRE ROOF.
16. EXISTING WATER HEATER TO REMAIN.
17. SHOWER HEAD AND TRIM PACKAGE BY ACORN MANUFACTURING: MODEL 1741 AND ALL ASSOCIATED TRIM AND PARTS.
18. LAVATORY FAUCET AND TRIM PACKAGE BY CHICAGO FAUCETS: 3400-TA-BCP, STRAINER DRAIN WITH SCALD GUARDS ON P-TRAP PIPING.
19. STAINLESS STEEL LAVATORY SINK BOWL BY KOHLER (K2608 SUNA).
20. 6" GUTTER AND DOWNSPOUT WITH GUTTER GUARD, DARK BRONZE.
21. ADA SHOWER HEAD AND TRIM PACKAGE BY ACORN MANUFACTURING: MODEL 1741ADA AND ALL ASSOCIATED TRIM AND PARTS.
22. FILTER BOX, 20X25X4, HANG ON WALL PER DNR INSPECTOR'S INSTRUCTION.
23. KENALL MLHA12-48R-MW-PP-1-45L40K-DCC-1-DV-EL SURFACE-MOUNTED INTERIOR LED LIGHTING FIXTURES, CONTROLLED BY OCCUPANCY SENSOR.
24. HUBBELL OMNIUS2000/UVPP OCCUPANCY MOTION SENSOR.
25. 1,600+ CFM POWER VENT, HOOD TO BE DARK BRONZE, CONTROLLED BY OCCUPANCY SENSOR. CONNECT TO NEW FILTER BOX VIA SINGLE WALL DUCTING
26. REUSE EXISTING GRAB BARS.
27. EXISTING CONCRETE TO REMAIN.
28. 6" CONCRETE SIDEWALK WITH #4 EPOXY COATED REBAR 24" O.C. CONTINUOUS OVER 6" SUBBASE.
29. INSTALL NEW T&G IN EXISTING SKYLIGHT HOLE, TRIM OUT EDGES AND FINISH TO MATCH EXISTING T&G.
30. PRESSURE TREATED 2X FASCIA, MATCH EXISTING DIMENSIONS, WRAP FASCIA IN BREAK METAL, DARK BRONZE.
31. PRESSURE WASH ENTIRE BUILDING WITH MILD DETERGENT, CLEAN WITH HORSE-HAIR OR NYLON BRUSH, STARTING AT THE BOTTOM AND FINISHING AT THE TOP OF THE BLOCK.

SYMBOL LEGEND

-  - DEMOLITION KEYNOTE
-  - CONSTRUCTION KEYNOTE



IOWA DEPARTMENT OF
NATURAL RESOURCES
ENGINEERING SERVICES - WALLACE BUILDING
502 E. 9TH ST., DES MOINES, IA 50319-0034
P: 515.725.8200
F: 515.725.8202



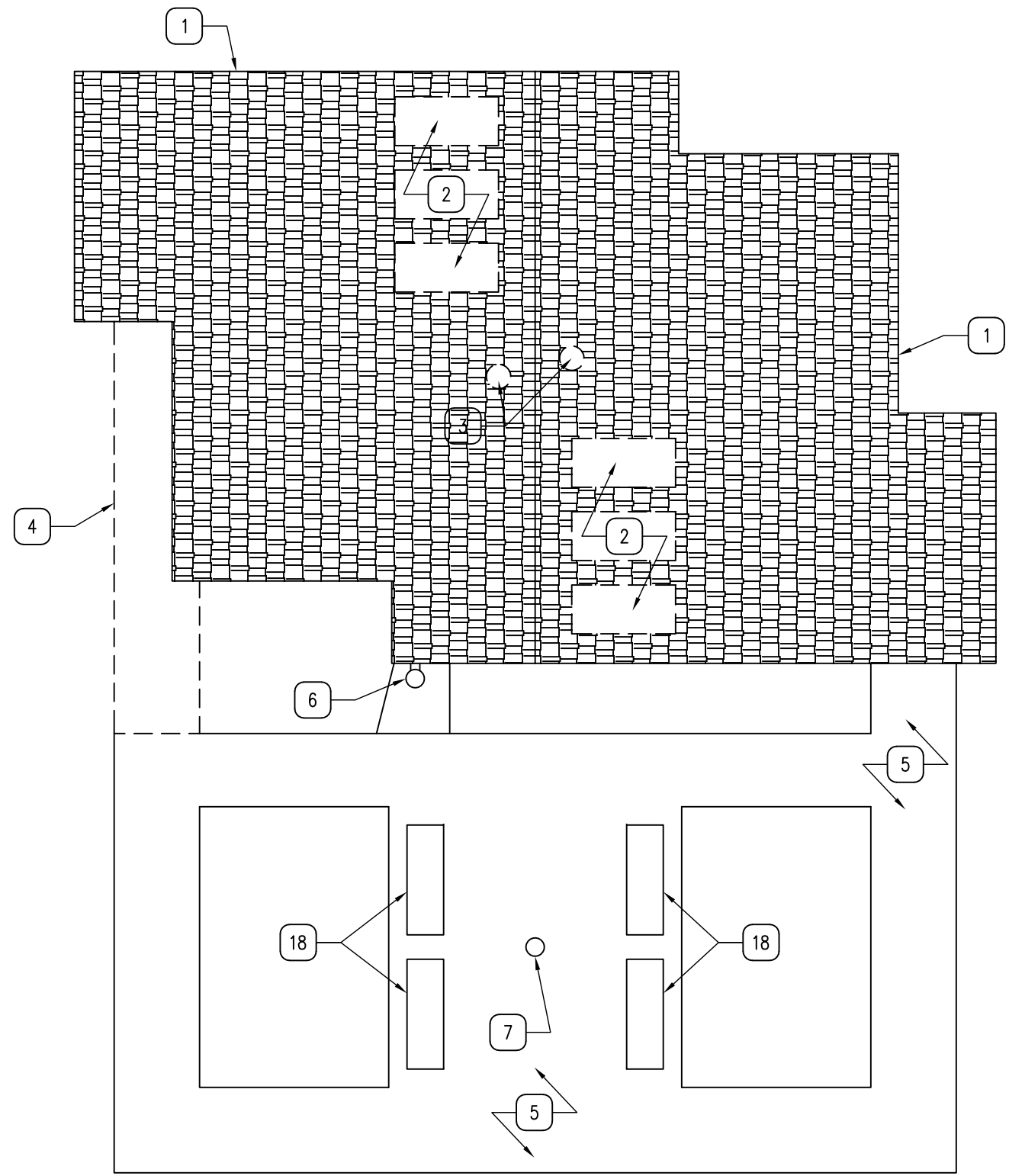
RESTROOM REMODEL FOR:
GULL POINT STATE PARK
1500 HARPEN STREET
MILFORD, IA 51351

DRAWN BY:	PROJECT NUMBER:
CHK'D BY:	DATE:
SHEET No:	

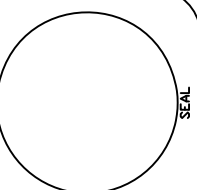
A-002



02 DEMOLITION AERIAL SITE PLAN
SCALE: NTS



01 DEMOLITION SITE PLAN
SCALE: 1/8" = 1'-0"



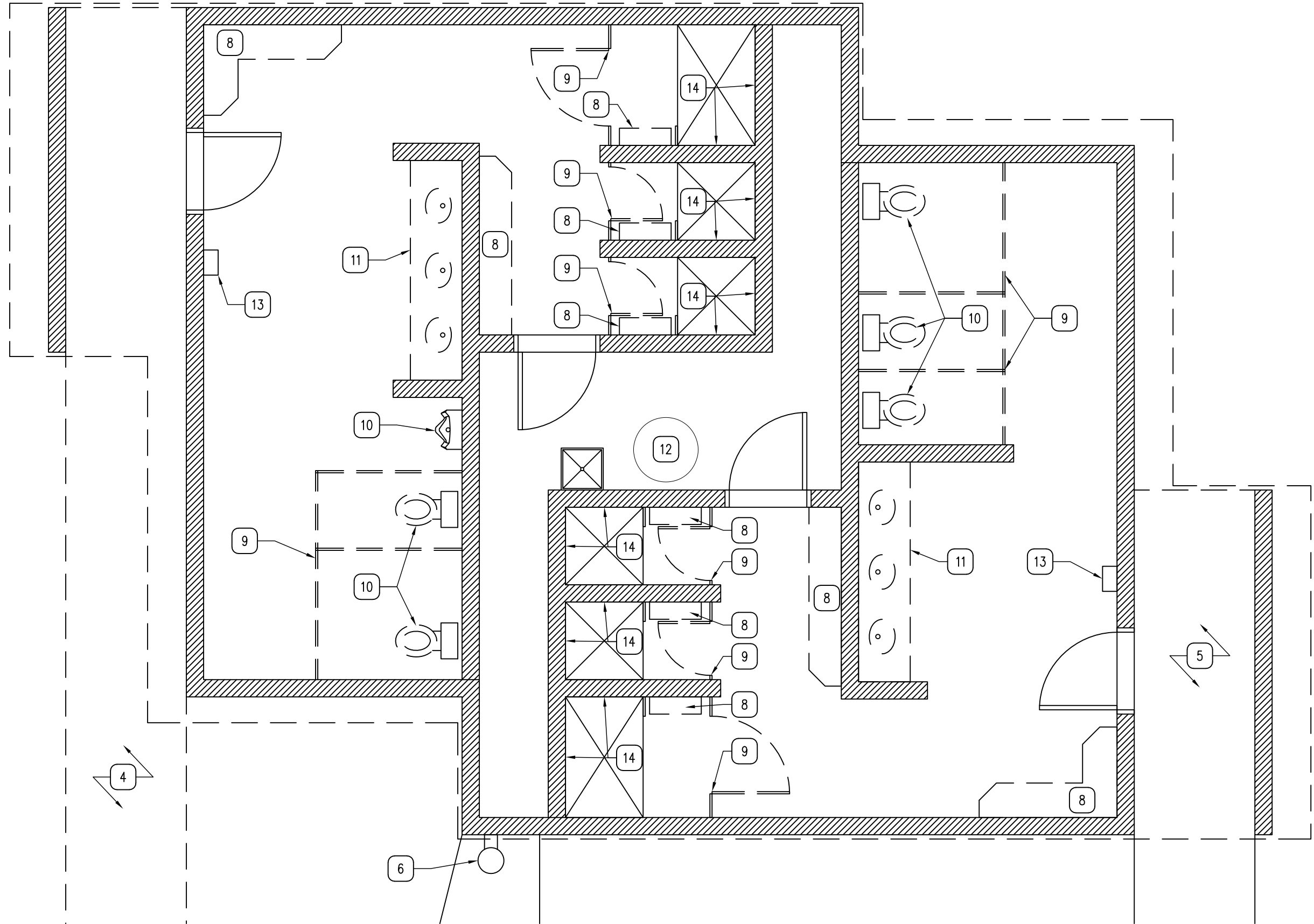
IOWA DEPARTMENT OF
NATURAL RESOURCES
ENGINEERING SERVICES - WALLACE BUILDING
502 E. 9TH ST., DES MOINES, IA 50319-0034
P: 515.725.8200
F: 515.725.8202



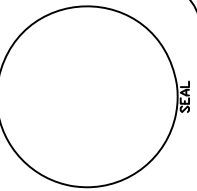
RESTROOM REMODEL FOR:
GULL POINT STATE PARK
1500 HARPEN STREET
MILFORD, IA 51351

DRAWN BY:	PROJECT NUMBER:
CHK'D BY:	DATE:
SHEET No:	

A-010



01 DEMOLITION FLOOR PLAN
 SCALE: 1/4" = 1'-0"



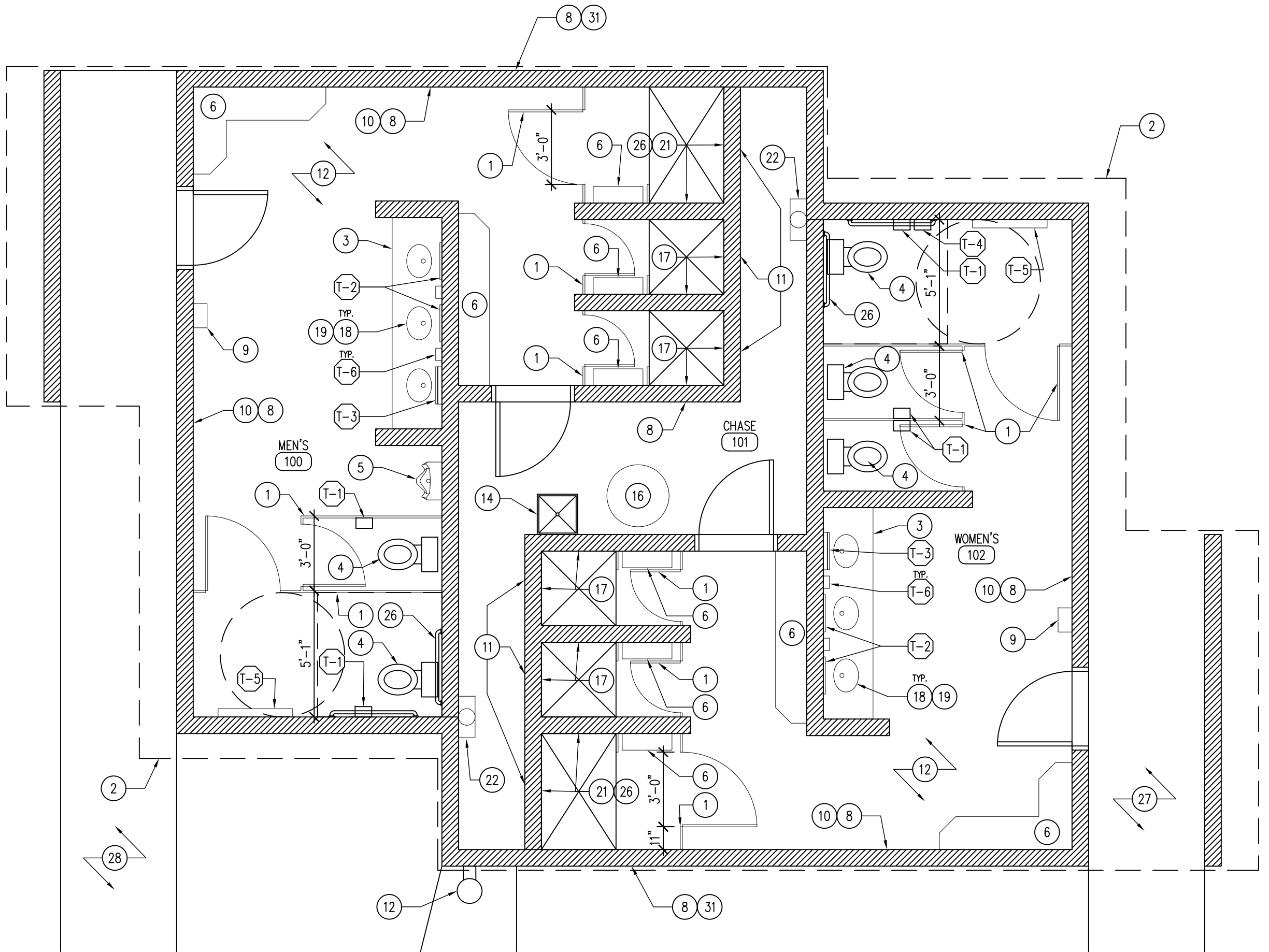
IOWA DEPARTMENT OF
NATURAL RESOURCES
 ENGINEERING SERVICES - WALLACE BUILDING
 502 E. 9TH ST., DES MOINES, IA 50319-0034
 P: 515.725.8200
 F: 515.725.8202



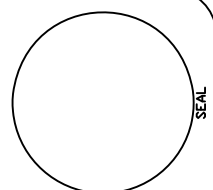
RESTROOM REMODEL FOR:
GULL POINT STATE PARK
 1500 HARPEN STREET
 MILFORD, IA 51351

DRAWN BY:	PROJECT NUMBER:
CHK'D BY:	DATE:
SHEET No:	

A-050



01 REFERENCE FLOOR PLAN
SCALE: 1/4" = 1'-0"



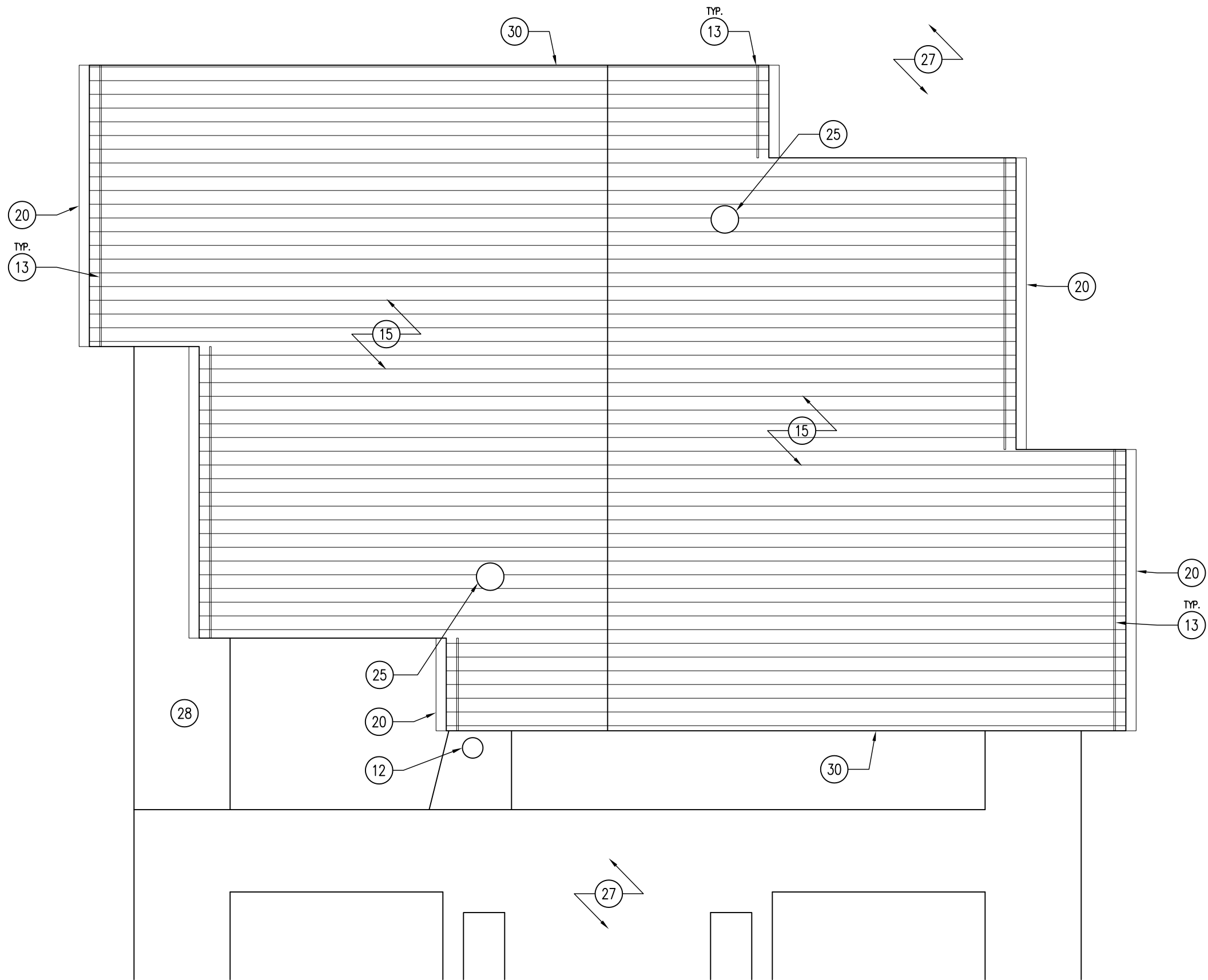
IOWA DEPARTMENT OF
NATURAL RESOURCES
ENGINEERING SERVICES - WALLACE BUILDING
502 E. 9TH ST., DES MOINES, IA 50319-0034
P: 515.725.8200
F: 515.725.8202



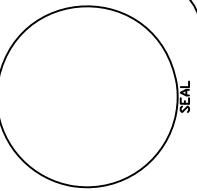
RESTROOM REMODEL FOR:
GULL POINT STATE PARK
1500 HARPEN STREET
MILFORD, IA 51351

DRAWN BY:	PROJECT NUMBER:
CHK'D BY:	DATE:
SHEET No:	

A-100



01 ROOF AND SITE PLAN
 SCALE: 1/4" = 1'-0"



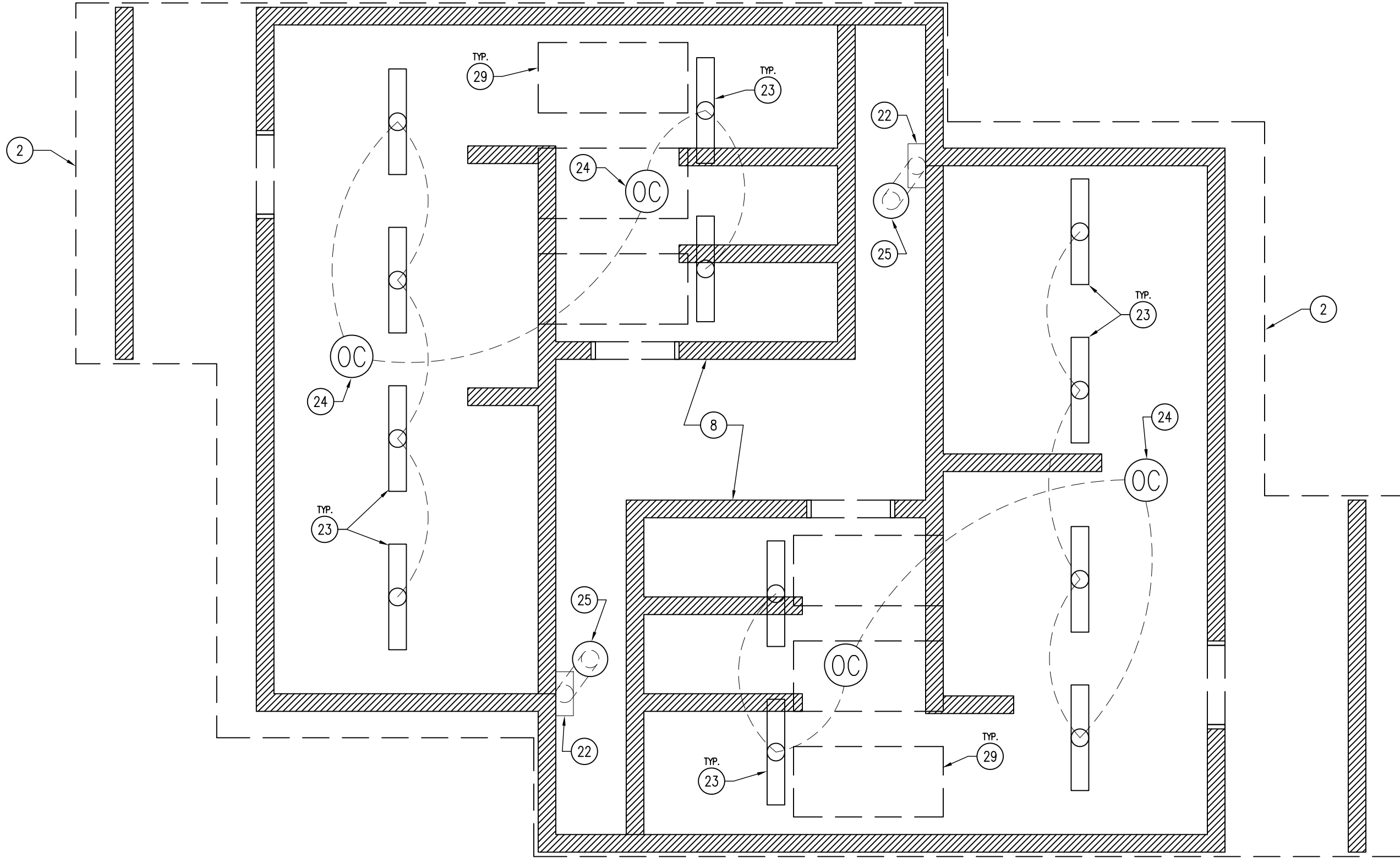
**IOWA DEPARTMENT OF
 NATURAL RESOURCES**
 ENGINEERING SERVICES - WALLACE BUILDING
 502 E. 9TH ST., DES MOINES, IA 50319-0034
 P: 515.725.8200
 F: 515.725.8202



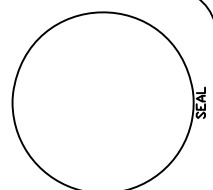
**RESTROOM REMODEL FOR:
 GULL POINT STATE PARK**
 1500 HARPEN STREET
 MILFORD, IA 51351

DRAWN BY:	PROJECT NUMBER:
CHK'D BY:	DATE:
SHEET No:	

A-101



01 REFLECTED CEILING/LIGHTING PLAN
 SCALE: 1/4" = 1'-0"



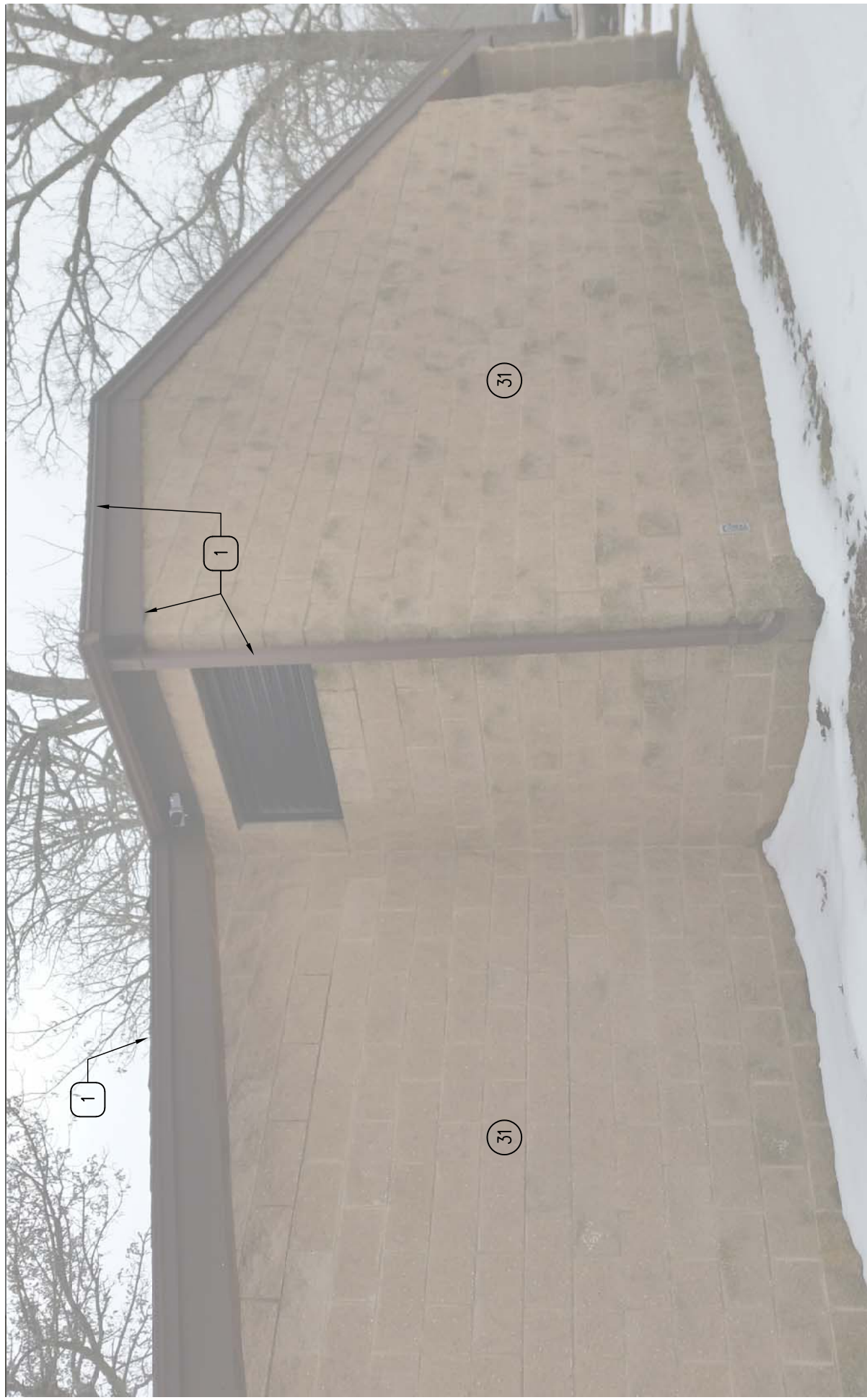
**IOWA DEPARTMENT OF
 NATURAL RESOURCES**
 ENGINEERING SERVICES - WALLACE BUILDING
 502 E. 9TH ST., DES MOINES, IA 50319-0034
 P: 515.725.8200
 F: 515.725.8202



**RESTROOM REMODEL FOR:
 GULL POINT STATE PARK**
 1500 HARPEN STREET
 MILFORD, IA 51351

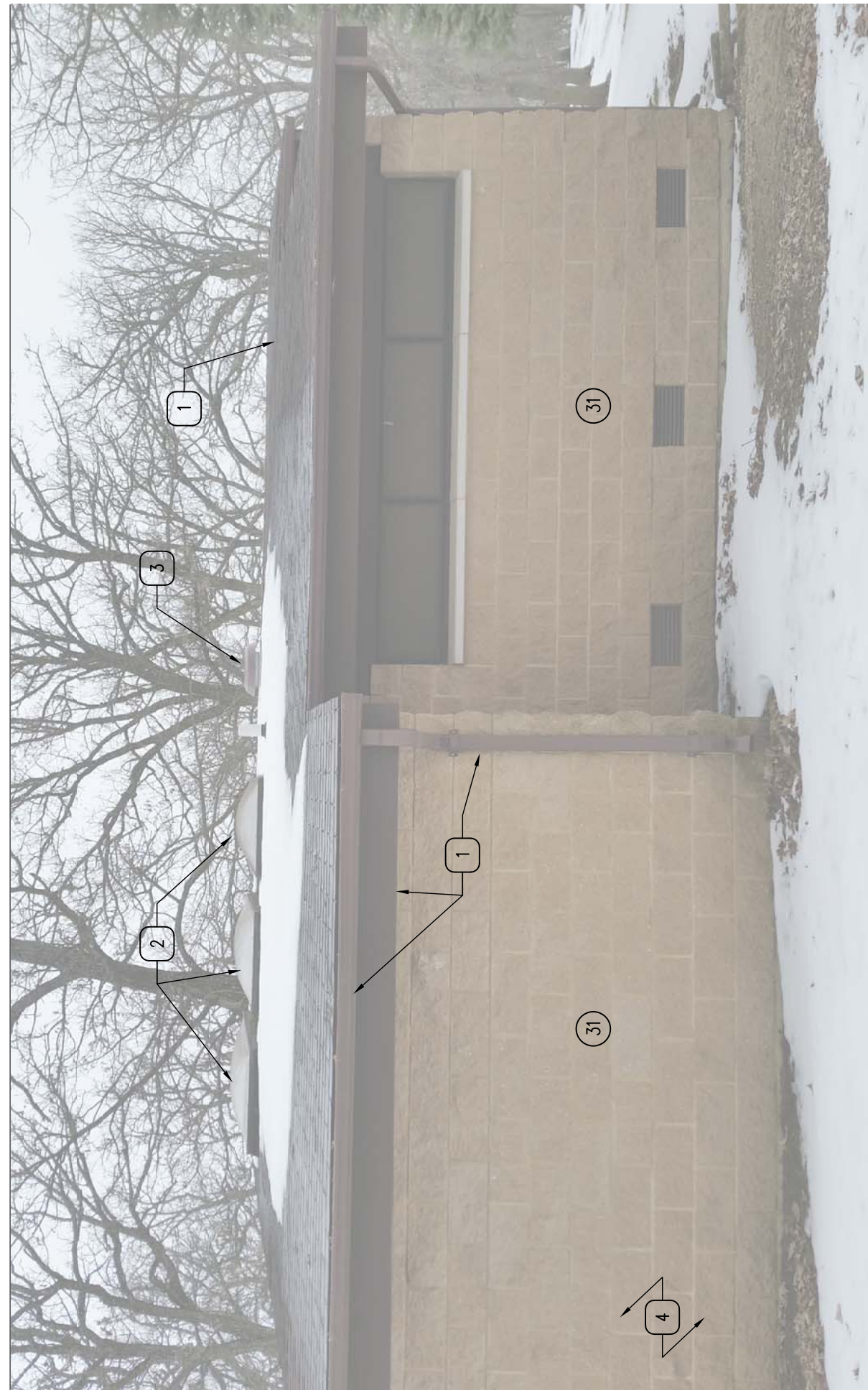
DRAWN BY:	PROJECT NUMBER:
CHK'D BY:	DATE:
SHEET No:	

A-110



02 EXTERIOR ELEVATION

SCALE: NTS



01 EXTERIOR ELEVATION

SCALE: NTS

DRAWN BY:	PROJECT NUMBER:
CHK'D BY:	17-01-30-03
SHEET No:	DATE:
	05.24.2017

A-200

RESTROOM REMODEL FOR:
GULL POINT STATE PARK

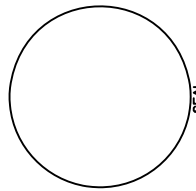
1500 HARPEN STREET

MILFORD, IA 51351



**IOWA DEPARTMENT OF
NATURAL RESOURCES**

ENGINEERING SERVICES - WALLACE BUILDING
502 E. 9TH ST., DES MOINES, IA 50319-0034
P: 515.725.8200
F: 515.725.8202

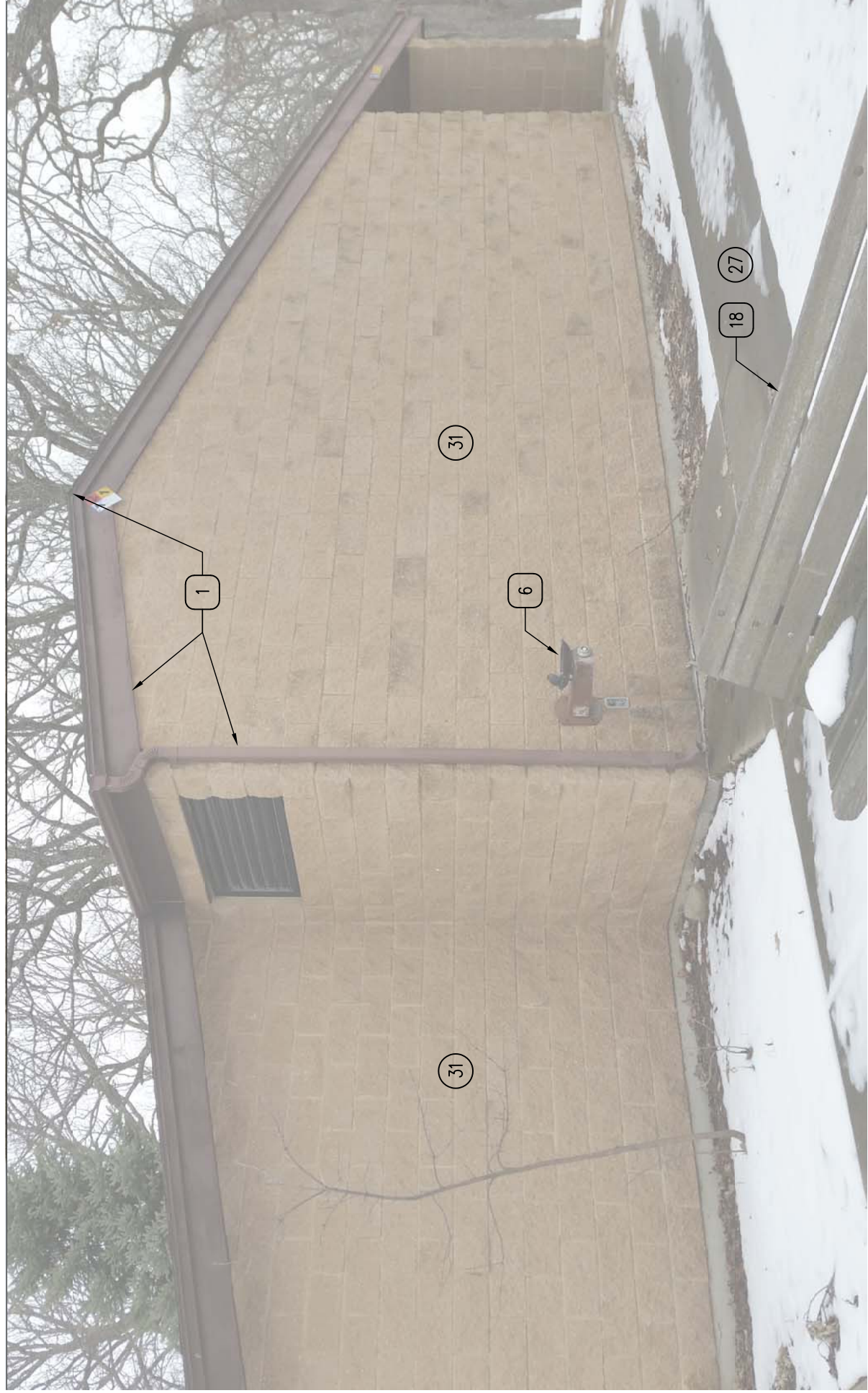


SEAL



02 EXTERIOR ELEVATION

SCALE: NTS



01 EXTERIOR ELEVATION

SCALE: NTS

RESTROOM REMODEL FOR:
GULL POINT STATE PARK

1500 HARPEN STREET

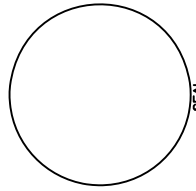
MILFORD, IA 51351

DRAWN BY:	PROJECT NUMBER:
CHK'D BY:	17-01-30-03
DATE:	05.24.2017
SHEET No:	

A-201



IOWA DEPARTMENT OF
NATURAL RESOURCES
ENGINEERING SERVICES - WALLACE BUILDING
502 E. 9TH ST., DES MOINES, IA 50319-0034
P: 515.725.8200
F: 515.725.8202

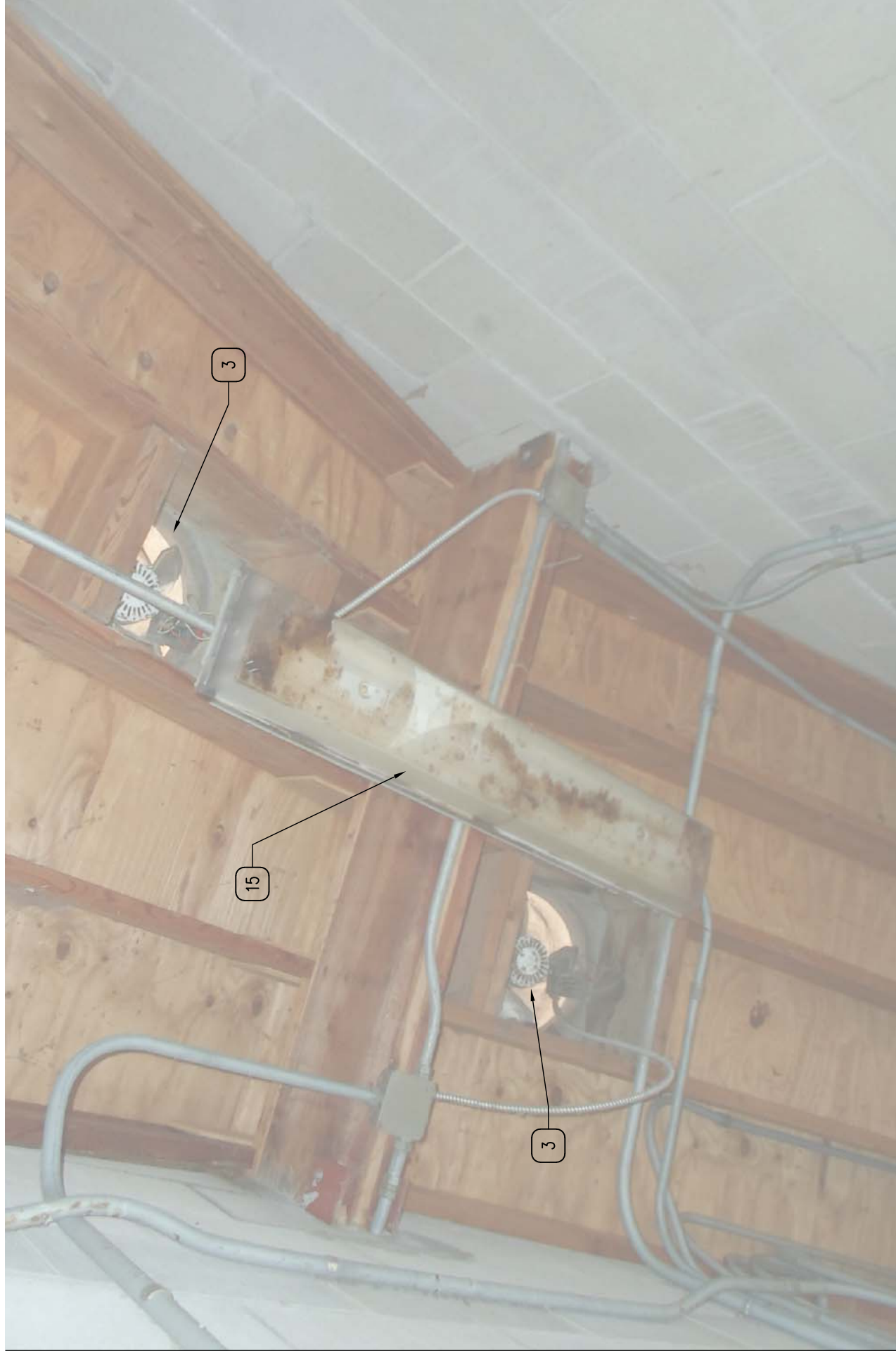


SEAL



02 INTERIOR ELEVATION

SCALE: NTS



01 INTERIOR ELEVATION

SCALE: NTS

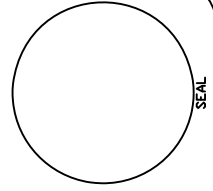
DRAWN BY	PROJECT NUMBER
CHK'D BY	17-01-30-03
SHEET No	DATE
	05.24.2017

RESTROOM REMODEL FOR:
GULL POINT STATE PARK

1500 HARPEN STREET MILFORD, IA 51351



IOWA DEPARTMENT OF
NATURAL RESOURCES
ENGINEERING SERVICES - WALLACE BUILDING
502 E. 9TH ST., DES MOINES, IA 50319-0034
P: 515.725.8200
F: 515.725.8202





02 INTERIOR ELEVATION

SCALE: NTS



01 INTERIOR ELEVATION

SCALE: NTS

DRAWN BY:	PROJECT NUMBER:
CHK'D BY:	17-01-30-03
SHEET No:	DATE:
	05.24.2017

A-203

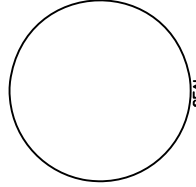
RESTROOM REMODEL FOR:
GULL POINT STATE PARK

1500 HARPEN STREET

MILFORD, IA 51351



**IOWA DEPARTMENT OF
 NATURAL RESOURCES**
 ENGINEERING SERVICES - WALLACE BUILDING
 502 E. 9TH ST., DES MOINES, IA 50319-0034
 P: 515.725.8200
 F: 515.725.8202



SEAL

02 NOT USED

SCALE: NTS



01 INTERIOR ELEVATION

SCALE: NTS

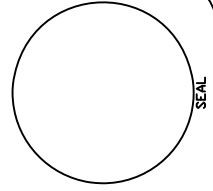
DRAWN BY	PROJECT NUMBER
CHK'D BY	DATE
SHEET No.	

A-204

RESTROOM REMODEL FOR:
GULL POINT STATE PARK
1500 HARPEN STREET
MILFORD, IA 51351



**IOWA DEPARTMENT OF
NATURAL RESOURCES**
ENGINEERING SERVICES - WALLACE BUILDING
502 E. 9TH ST., DES MOINES, IA 50319-0034
P: 515.725.8200
F: 515.725.8202



SEAL