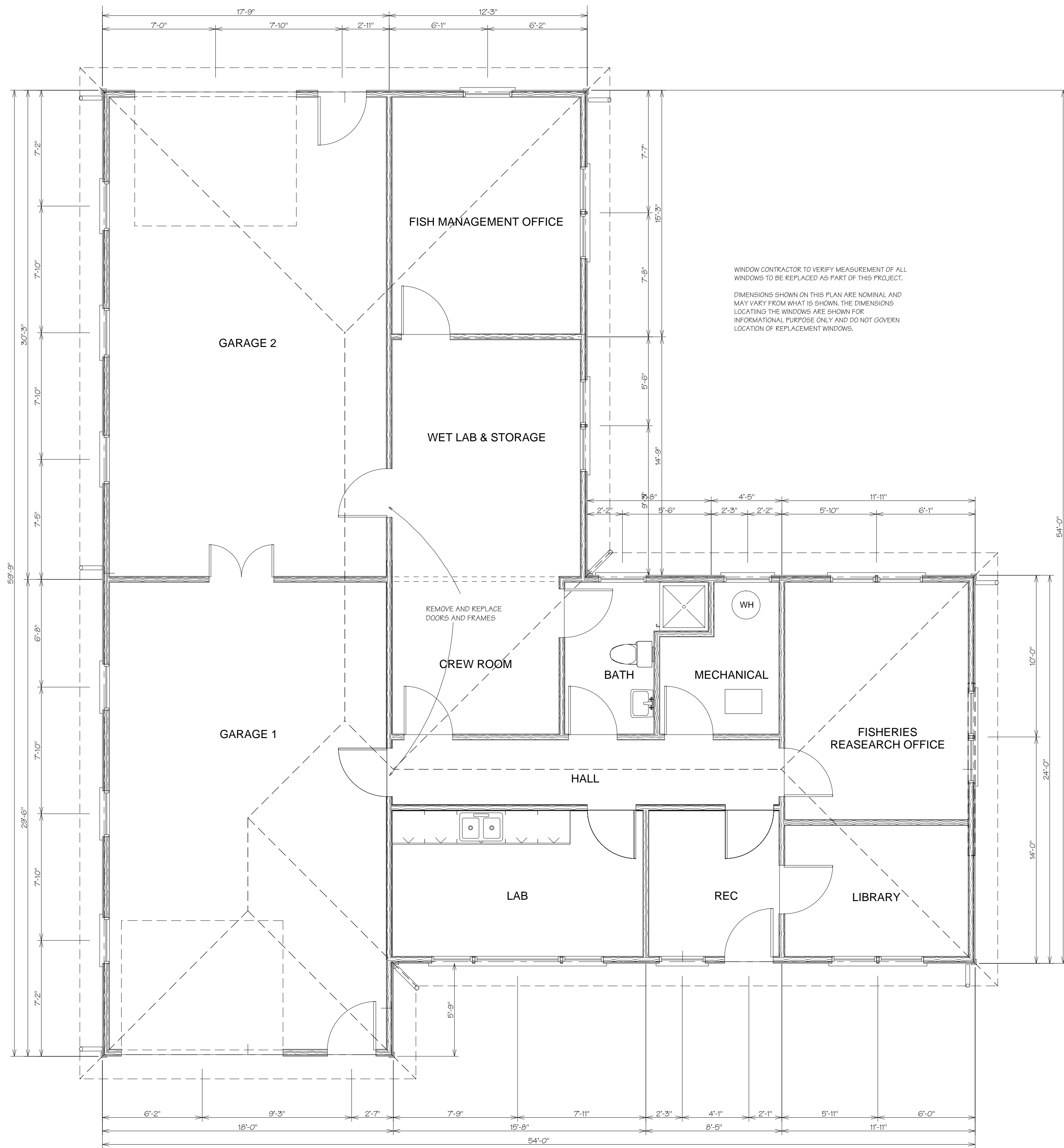
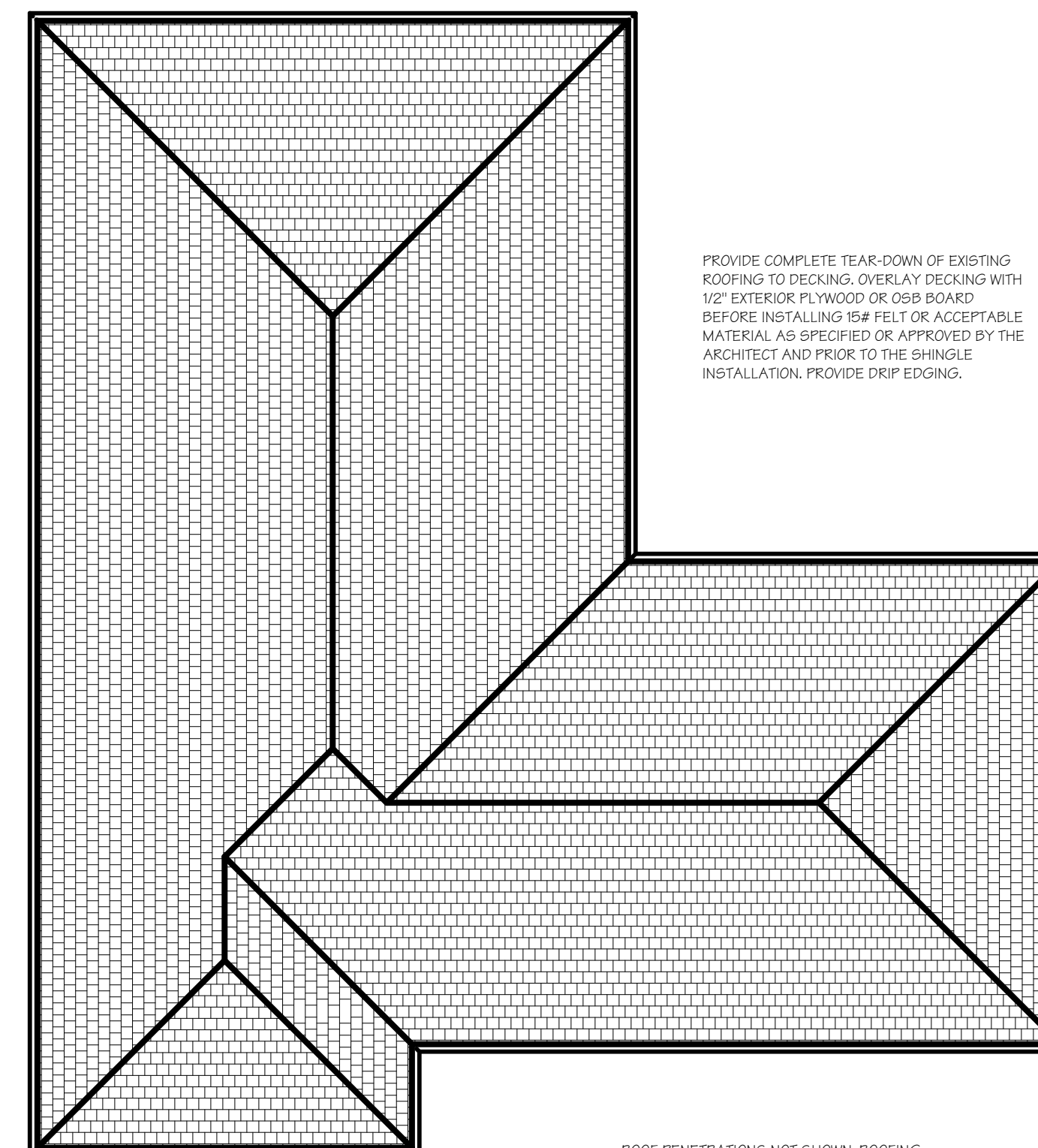


BELLEVUE FISHERIES STATION SIDING, WINDOWS, DOORS AND ROOF REPLACEMENT - 09-06-49-01 JACKSON COUNTY, IOWA



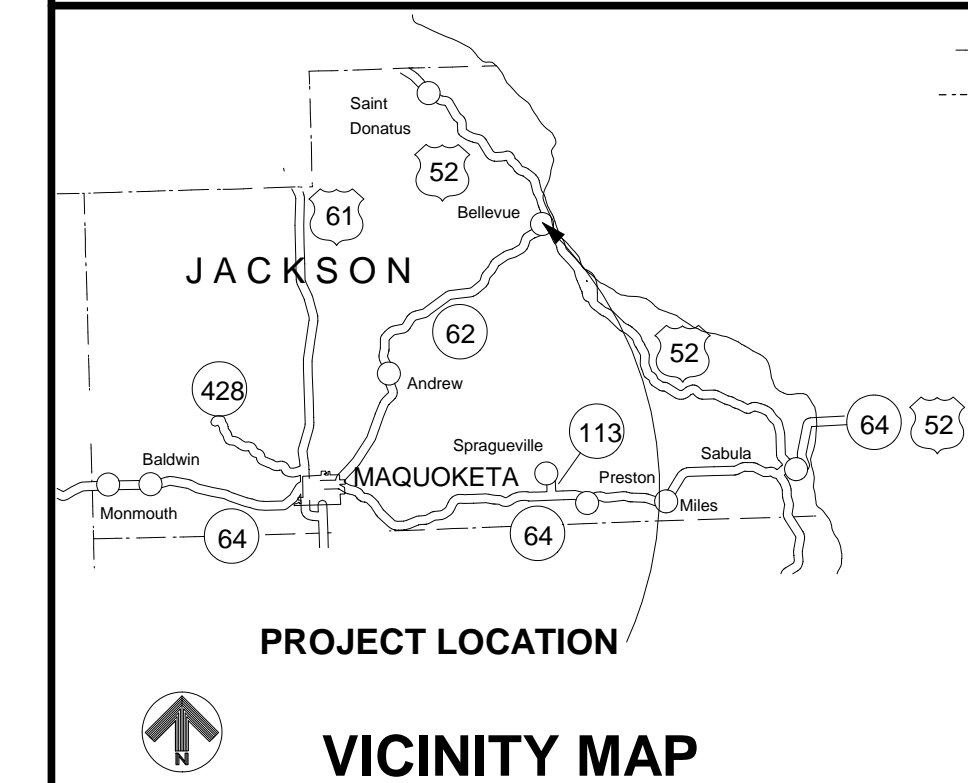
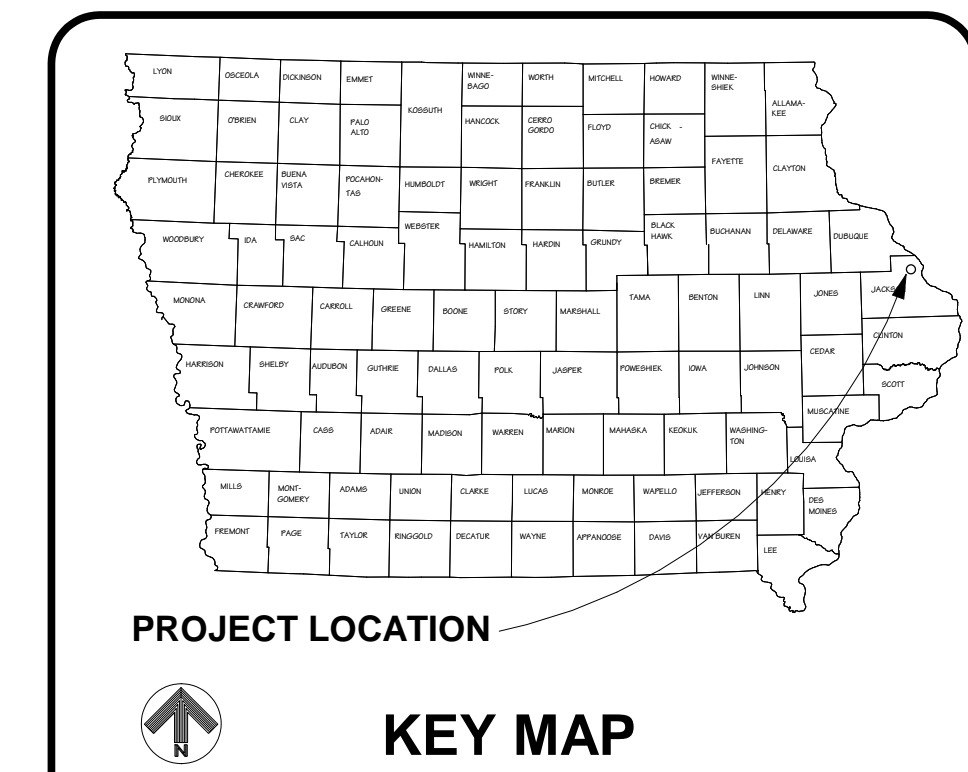
FLOOR PLAN
SCALE 1/4" = 1'-0"



ROOF PLAN
SCALE 1/8" = 1'-0"

SCOPE OF WORK

- ROOFING: REMOVE EXISTING ASPHALT SHINGLE ROOFING SYSTEM ALL THE WAY DOWN TO DECKING. OVERLAY DECKING WITH 1/2" EXTERIOR PLYWOOD OR OSB. INSTALL NEW ROOFING SYSTEM AS SPECIFIED.
- SIDING: REMOVE EXISTING SIDING DOWN TO EXISTING SHEATHING. REPLACE HOUSEWRAP AND SIDING AS SPECIFIED. REPLACE FACIA AND WRAP WITH ALUMINUM. ALSO WRAP DOOR AND WINDOW TRIM WITH ALUMINUM. REMOVE EXISTING SOFFIT MATERIAL AND REPLACE WITH VENTED ALUMINUM SOFFIT MATERIAL.
- WINDOWS: REMOVE EXISTING WINDOWS THROUGHOUT AND PROVIDE REPLACEMENT WINDOWS AS SPECIFIED AND AS NOTED ON THE DRAWINGS.
- DOORS: REMOVE ALL EXISTING DOORS AND FRAMES AND REPLACE WITH NEW DOORS AND FRAMES AS SPECIFIED. REMOVE AND REPLACE ONE OVERHEAD DOOR AS SHOWN AND AS SPECIFIED.
- GUTTERS AND DOWNSPOUTS: REMOVE EXISTING GUTTERS AND DOWNSPOUTS AND REPLACE WITH SPECIFIED LEAFGUARD SYSTEM.



ESTIMATE OF QUANTITIES

QUANTITIES BELOW ARE ESTIMATE TO FACILITATE CONTRACTOR'S OWN BIDDING CALCULATIONS. THESE DO NOT RELIEVE CONTRACTOR IN PROVIDING A COMPLETE SYSTEM AS REQUIRED IN THE CONTRACT DOCUMENT. CONTRACTOR SHALL BE RESPONSIBLE TO PROVIDE ADDITIONAL QUANTITIES, WHERE NECESSARY, TO FULFILL THE CONTRACT AND NO ADDITIONAL PAYMENTS SHALL BE MADE FOR THESE QUANTITIES.

TITLE	QUANTITY
DEMOLITION	LUMP SUM
ASPHALT SHINGLE ROOFING	2770 SQFT
1/2" X 4' X 8' EXT. PLYWOOD OR OSB OVERLAY	86 SH
FASCIA	240 LF
SOFFIT	358 SQFT
GUTTERS	240 LF
DOWNSPOUTS	LUMP SUM
HOUSE WRAP	2000 SQFT
VINYL SIDING	LUMP SUM
VINYL WINDOWS REPLACEMENT	LUMP SUM
METAL DOORS	5 EA
OVERHEAD DOORS	1 EA

DRAWING INDEX

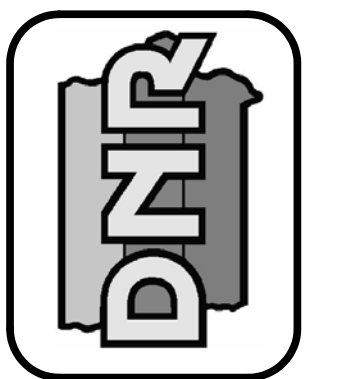
TITLE	SHEET NO.
COVER SHEET, FLOOR & ROOF PLANS, SCOPE OF WORK	1
EXTERIOR ELEVATIONS	2

IOWA DEPARTMENT OF NATURAL RESOURCES
ENGINEERING SERVICES - WALLACE STATE OFFICE BUILDING
DES MOINES, IOWA 50319-0034

OWNERSHIP OF DOCUMENTS: THE DOCUMENTS AND THE IDEAS AND DESIGN INCORPORATED HEREIN ARE AN INSTRUMENT OF SERVICE OF THE ENGINEERING SERVICES BUREAU OF THE DEPARTMENT OF NATURAL RESOURCES. THE WHOLE AND IN PART FOR ANY OTHER PROJECT WITHOUT WRITTEN AUTHORIZATION OF THE RESPONSIBLE DESIGN PROFESSIONAL EMPLOYED OR RETAINED BY THE ENGINEERING SERVICES BUREAU OF THE DEPARTMENT OF NATURAL RESOURCES.

DESIGNED BY	T. AMICE	DATE	11/12/08
CHECKED BY	T. AMICE	DATE	11/12/08
ACT. CODE NO.	FW 5841	PROJECT NO.	09-06-49-01

DON LABATE, CHIEF - ENGINEERING	DATE
KEN HERRING, ADMINISTRATOR - CONSERVATION AND RECREATION DIVISION	DATE
PATRICIA L. BOODY, DEPUTY DIRECTOR - DEPARTMENT OF NATURAL RESOURCES	DATE



BELLEVUE FISHERIES STATION
SIDING, WINDOWS, DOORS AND ROOFING REPLACEMENT
JACKSON COUNTY, IOWA
COVER SHEET, FLOOR PLAN & SCOPE OF WORK
PROJECT NO. 09-06-49-01

IOWA DEPARTMENT OF NATURAL RESOURCES
ENGINEERING SERVICES - WALLACE STATE OFFICE BUILDING
DES MOINES, IOWA 50319-0034

OWNERSHIP OF DOCUMENTS: THE DOCUMENTS AND THE IDEAS AND DESIGN INCORPORATED HEREIN ARE AN INSTRUMENT OF SERVICE OF THE ENGINEERING SERVICES BUREAU OF THE DEPARTMENT OF NATURAL RESOURCES. THE WHOLE AND IN PART FOR ANY OTHER PROJECT WITHOUT WRITTEN AUTHORIZATION OF THE RESPONSIBLE DESIGN PROFESSIONAL EMPLOYED OR RETAINED BY THE ENGINEERING SERVICES BUREAU OF THE DEPARTMENT OF NATURAL RESOURCES.

DESIGNED BY	T. AMICE	DATE	11/12/08
CHECKED BY	T. AMICE	DATE	11/12/08
ACT. CODE NO.	FW 5841	PROJECT NO.	09-06-49-01



BELLEVUE FISHERIES STATION
SIDING, WINDOWS, DOORS AND ROOFING REPLACEMENT
JACKSON COUNTY, IOWA
EXTERIOR VIEWS
PROJECT NO. 09-06-49-01

IOWA DEPARTMENT OF NATURAL RESOURCES
ENGINEERING SERVICES - WALLACE STATE OFFICE BUILDING
DES MOINES, IOWA 50319-0034
OWNERSHIP OF DOCUMENTS: THE DOCUMENTS AND THE IDEAS AND DESIGN INCORPORATED HEREIN ARE AN INSTRUMENT OF SERVICE OF THE ENGINEERING SERVICES BUREAU OF THE DEPARTMENT OF NATURAL RESOURCES. THE ENTIRE PROJECT WAS AUTHORIZED BY THE IOWA DEPARTMENT OF NATURAL RESOURCES. THE DESIGN PROFESSIONAL EMPLOYED OR RETAINED BY THE ENGINEERING SERVICES BUREAU OF THE DEPARTMENT OF NATURAL RESOURCES.

DESIGNED BY	T. AMICE	DATE	11/12/08
CHECKED BY	T. AMICE	DATE	11/12/08
ACT. CODE NO.	FW 58-41	PROJECT NO.	09-06-49-01

2

SHEET 2 of 2

PROVIDE COMPLETE TEAR-DOWN OF EXISTING ROOFING TO DECKING. OVERLAY DECKING WITH 1/2" EXTERIOR PLYWOOD OR OSB BOARD BEFORE INSTALLING 15# FELT OR ACCEPTABLE MATERIAL AS SPECIFIED OR APPROVED BY THE ARCHITECT AND PRIOR TO THE SHINGLE INSTALLATION. PROVIDE DRIP EDGING.

REMOVE AND REPLACE FACIA WITH SAME MATERIAL AS EXISTING AND COVER WITH ALUMINUM. TYPICAL ALL ELEVATIONS THIS SHEET.

THIS DOOR TO REMAIN.

REMOVE AND REPLACE DOOR AND FRAME. SEE SPECS

REMOVE AND REPLACE SIDING THROUGHOUT. SEE SPECS. INSTALL HOUSEWRAP PRIOR TO SIDING REPLACEMENT. WRAP DOORS AND WINDOW FRAMES WITH ALUMINUM. TYPICAL ALL ELEVATIONS THIS SHEET.

REMOVE AND REPLACE DOOR AND FRAME. SEE SPECS

FRONT ELEVATION

SCALE 1/4" = 1'-0"

PROVIDE COMPLETE TEAR-DOWN OF EXISTING ROOFING TO DECKING. OVERLAY DECKING WITH 1/2" EXTERIOR PLYWOOD OR OSB BOARD BEFORE INSTALLING 15# FELT OR ACCEPTABLE MATERIAL AS SPECIFIED OR APPROVED BY THE ARCHITECT AND PRIOR TO THE SHINGLE INSTALLATION. PROVIDE DRIP EDGING.

REMOVE AND REPLACE SOFFIT AND REPLACE WITH VENTED ALUMINUM. TYPICAL ALL ELEVATIONS THIS SHEET.

REMOVE AND REPLACE GUTTERS AND DOWNSPOUTS AS SPECIFIED. TYPICAL ALL ELEVATIONS THIS SHEET.

WEST ELEVATION

SCALE 1/4" = 1'-0"

PROVIDE COMPLETE TEAR-DOWN OF EXISTING ROOFING TO DECKING. OVERLAY DECKING WITH 1/2" EXTERIOR PLYWOOD OR OSB BOARD BEFORE INSTALLING 15# FELT OR ACCEPTABLE MATERIAL AS SPECIFIED OR APPROVED BY THE ARCHITECT AND PRIOR TO THE SHINGLE INSTALLATION. PROVIDE DRIP EDGING.

REMOVE AND REPLACE DOOR AND FRAME. SEE SPECS

REMOVE AND REPLACE OVERHEAD DOOR. SEE SPECS

NORTH ELEVATION

SCALE 1/4" = 1'-0"

PROVIDE COMPLETE TEAR-DOWN OF EXISTING ROOFING TO DECKING. OVERLAY DECKING WITH 1/2" EXTERIOR PLYWOOD OR OSB BOARD BEFORE INSTALLING 15# FELT OR ACCEPTABLE MATERIAL AS SPECIFIED OR APPROVED BY THE ARCHITECT AND PRIOR TO THE SHINGLE INSTALLATION. PROVIDE DRIP EDGING.

REMOVE EXISTING COMBINATION WINDOW, APPROXIMATELY 128" H X 58" AND PROVIDE MULLED DOUBLE HUNG WINDOW REPLACEMENT APPROXIMATELY 68" H X 58" AS SPECIFIED. PROVIDE NECESSARY ADDITIONAL FRAMING, EXTERIOR SHEATHING AND INTERIOR GYPSUM BOARD, TAPER, TREATED, PRIMED AND PAINTED TO MATCH EXISTING.

UNLESS OTHERWISE NOTED, REMOVE AND REPLACE ALL WINDOWS WITH VINYL WINDOW REPLACEMENT AS SPECIFIED OF THE TYPE SHOWN ON THE DRAWINGS. CONTRACTOR TO VERIFY ALL EXISTING DIMENSIONS. TYPICAL ALL ELEVATIONS THIS SHEET.

EAST ELEVATION

SCALE 1/4" = 1'-0"