

KEOTA
110 S. Keokuk Washington Rd.
Keota, IA 52248
(641) 636-3748
(877) 843-4893

RICHLAND
709 Hwy 78
Richland, IA 52585
(319) 456-6141

STOCKPORT
13794 Rte W 30
Stockport, IA 52651
(319) 796-4388
(888) 796-4388



LIBERTYVILLE
201 Mill St. P.O. Box 70
Libertyville, IA 52567
(641) 693-3111
(800) 447-4148

BRIGHTON
3370 Germanville Rd.
Brighton, IA 52540
(319) 694-2481

AINSWORTH
2952 Hwy 92
P.O. Box 70
Ainsworth, IA 52201
(319) 657-3661
(800) 435-4470

CON 12-15
doc # 4407

January 24, 2006

Tami S. Rice
Environmental Specialist
Contaminated Sites Section
Iowa Department of Natural Resources

Subject: Requested Site Information

Dear Ms. Rice,

Please find enclosed, the information requested from our phone conversation.

1. Site History
2. Current Site Use
3. Aerial map
4. Sampling Data

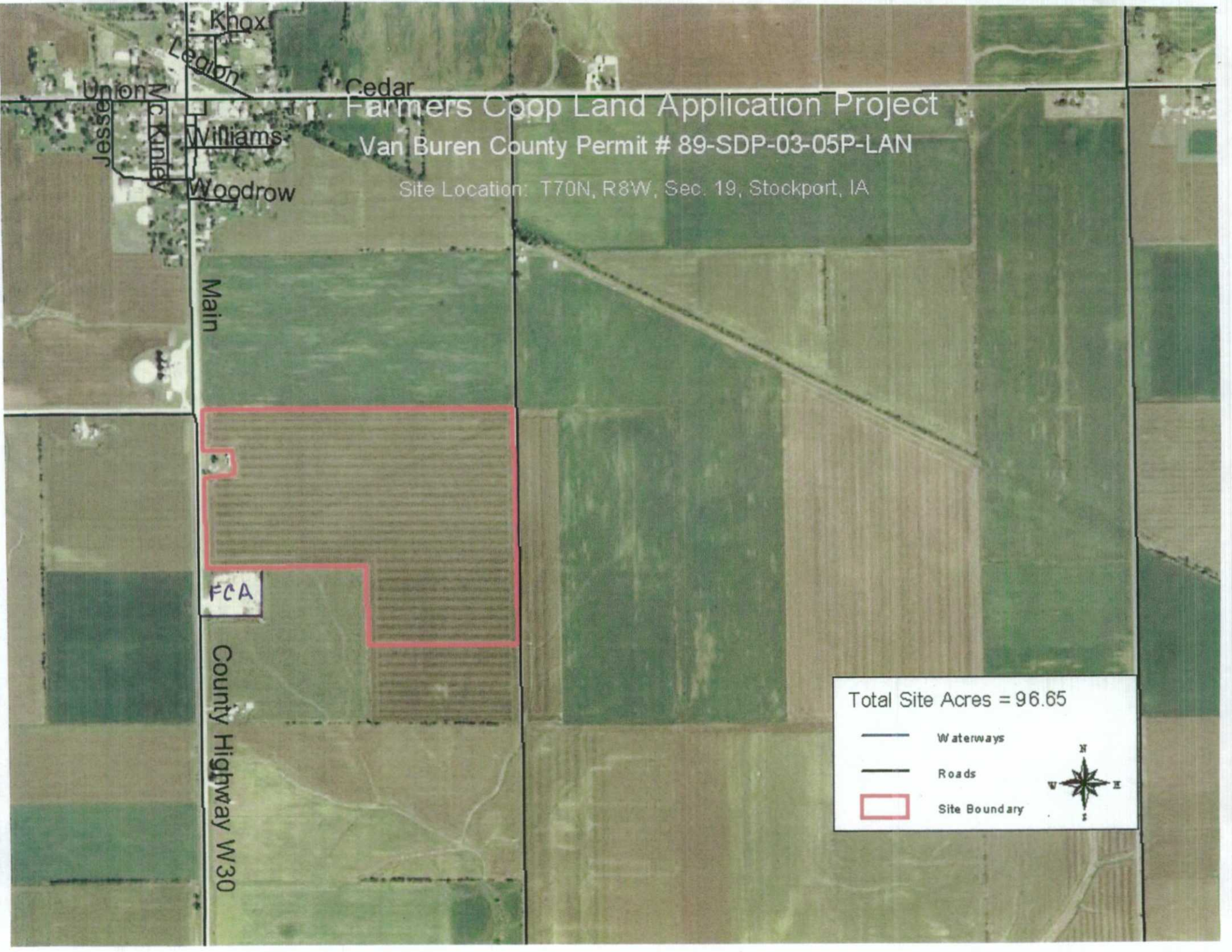
The site was constructed in 1981 as a chemical and fertilizer storage and mixing facility, prior to that it was crop land.

Current site use is a fertilizer and chemical storage and mixing facility.

Concerning receptor information, after checking with the county assessor's office and the county engineer's office, I was unable to obtain any information.

Please contact me if you need any other information.

Terry King
Farmers Coop Association
13794 Rt W30
Stockport, IA 52651



Farmers Coop Land Application Project

Van Buren County Permit # 89-SDP-03-05P-LAN




Site Location: T70N, R8W, Sec. 19, Stockport, IA

Main

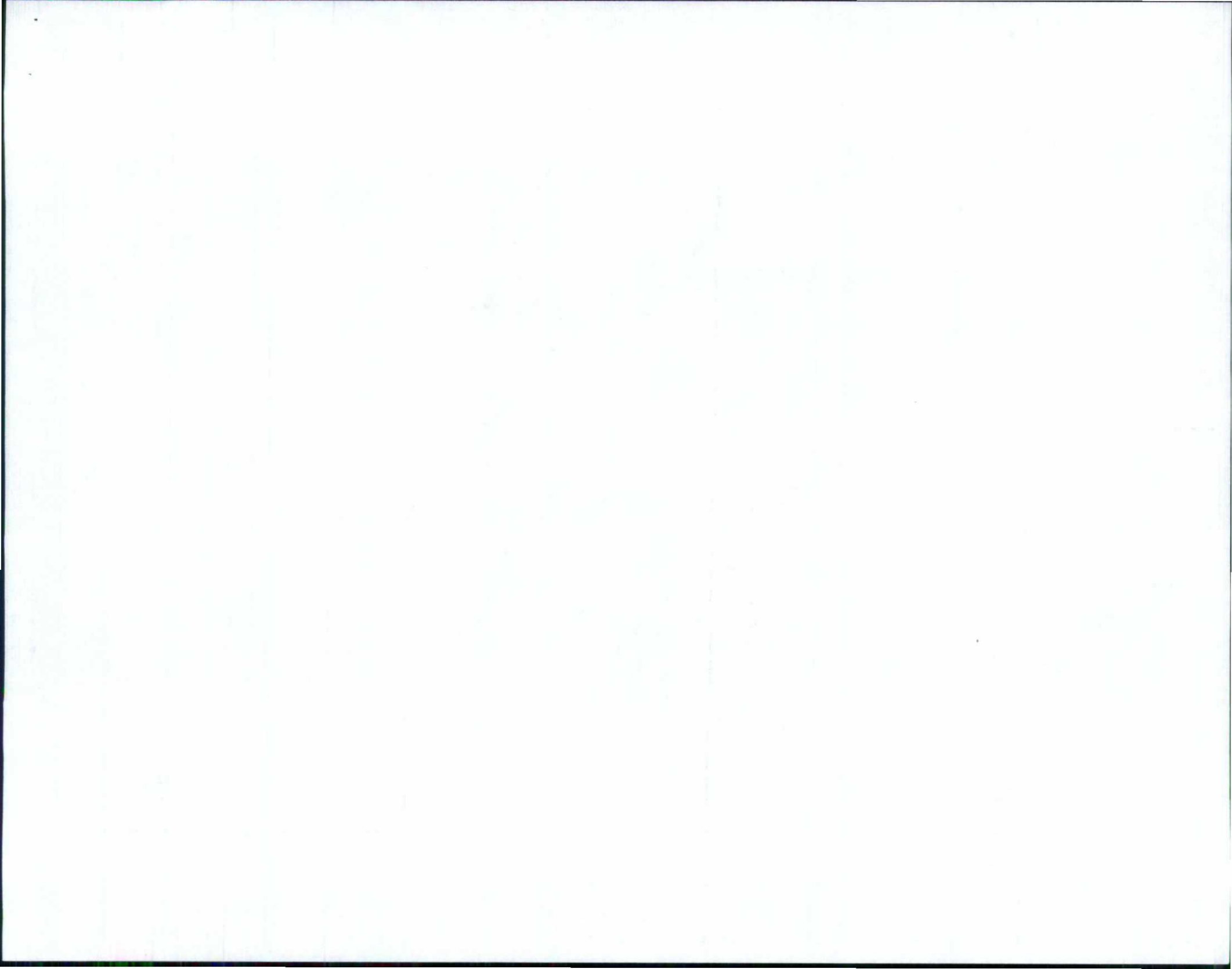
County Highway W30

FCA

Total Site Acres = 96.65

-  Waterways
-  Roads
-  Site Boundary





CONTAMINANT QUANTITY AND APPLICATION RATE CALCULATIONS

8.	A	B	C	D	E	F	G
	Contaminant	Label Used prod. Name and EPA Reg. No.	Avg. or Max. Conc. (ppm)	Total Quantity (pounds)	Labeled Crops Corn or Soybeans	Application Rate 1/2 lowest label rate (pounds/acre)	Minimum Acreage (D/F)
1)	Alachlor	Lasso 524-314	20.41	10.04	corn	2	5.0
2)	Acetochlor	Harness 524-473	0.04		corn	1	
3)	Metolachlor	Dual 100-597	0.43		corn	0.8	
4)	Dimethenamid	Frontier 87674-68-8	0.03		corn	0.7	
5)	Atrazine	Atrazine 4L 9779-255	13.15	17.85	corn	1	35.7
6)	Cyanazine	Bladex 352-470	23.89		corn	0.5	
7)	Simazine	Princep 100-526	0.00		corn	1.5	
8)	Metribuzin	Sencor 3125-314	0.03		corn	0.25	
9)	Propazine	Prozinex 139-40-2	0.12		sorghum	1.5	
10)	Pendimethalin	Prowl 3.3 EC 241-337	2.67	1.29	corn	1.5	0.9
11)	Trifluralin	Trifluralin 4EC 9779-303	0.02		soybeans	1	
12)	EPTC	Eradicane 10182-220	0.00	0.00	corn	2	0.0
13)	Butylate	Sutan 51036-248	0.00		corn	2	
14)	Dicamba		0.00				
15)	Bentazon		0.00				
16)							
17)	Nitrate-Nitrogen		120.2	88.21	corn	75	1.2
18)	TKN		63.6		corn	75	

Volume 200 cubic yards
Soil Density 2,400 lbs/yd³

CONTAMINANT QUANTITY AND APPLICATION RATE CALCULATIONS

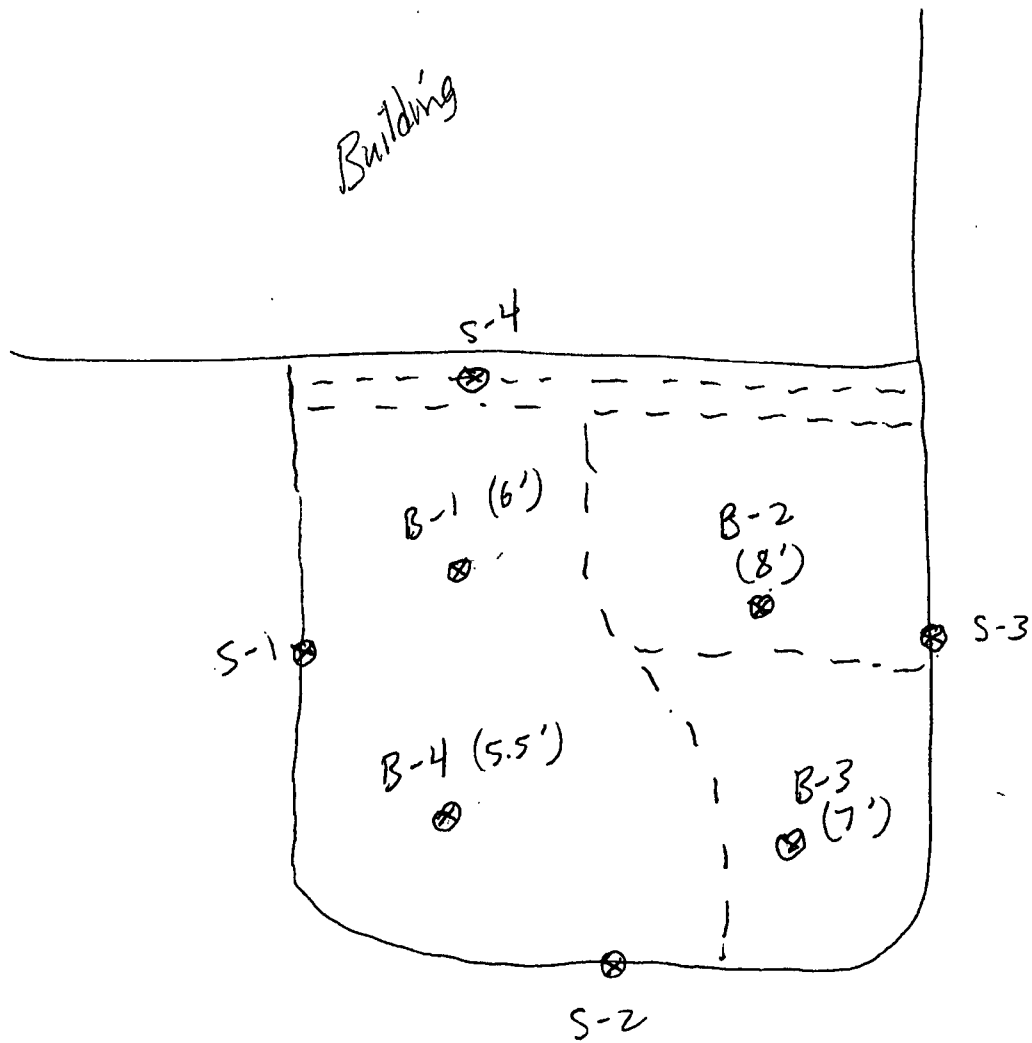
B.	A	B	C	D	E	F	G
	Contaminant	Label Used prod. Name and EPA Reg. No.	Avg. or Max. Conc. (ppm)	Total Quantity (pounds)	Labeled Crops Corn or Soybeans	Application Rate 1/2 lowest label rate (pounds/acre)	Minimum Acreage (D/F)
1)	Alachlor	Lasso	1524-314	20.41	corn	2	5.0
2)	Acetochlor	Harness	1524-473	0.04	corn	1	
3)	Metolachlor	Dual	100-597	0.43	corn	0.8	
4)	Dimethenamid	Frontier	187874-68-8	0.03	corn	0.7	
5)	Atrazine	Atrazine 4L	9779-255	13.15	corn	1	35.7
6)	Cyanazine	Bladex	352-470	23.89	corn	0.5	
7)	Simazine	Princep	100-528	0.00	corn	1.5	
8)	Metribuzin	Sencor	3125-314	0.03	corn	0.25	
9)	Propazine	Prozinex	139-40-2	0.12	sorghum	1.5	
10)	Pendimethalin	Prowl 3.3 EC	241-337	2.87	corn	1.5	0.9
11)	Trifluralin	Trifluralin 4EC	9779-303	0.02	soybeans	1	
12)	EPTC	Eradicane	10182-220	0.00	corn	2	0.0
13)	Butylate	Sutan	51036-248	0.00	corn	2	
14)	Dicamba			0.00			
15)	Bentazon			0.00			
17)	Nitrate-Nitrogen			20.2	corn	75	1.2
18)	TKN			63.6	corn	75	

- Alachlor
- Acetochlor
- Metolachlor
- Dimethenamid
- Atrazine
- Cyanazine
- Simazine
- Metribuzin
- Propazine
- Pendimethalin
- Trifluralin
- EPTC
- Butylate
- Dicamba
- Bentazon
- Nitrate-Nitrogen
- TKN

Volume 200 cubic yards
 Soil Density 2,400 lbs/yd³

MONITORING DATA REPORT

B-1	B-2	B-3	B-4	S-1	S-2	S-3	S-4	BN-1	BN-2	SN-1	SN-2	SN-3	Comp 1	Comp 2	Comp 3	Average
													(7.5mp)	(7.5mp)	(7.5mp)	(ppm)
4.9	18	5.7	5.5									850	9.8	0.094		20.408
0.29	0.35	0.28	0.079										0.12	0.16		0.037
2.2	1.9	1.5	0.4							0.089			7.5	0.78	0.24	0.430
0.32	0.29	0.21	0.08										0.18			0.031
0.19	0.11	0.058	0.067									440	0.93	5.8		13.149
0.28	0.66	0.37	0.24									810	0.68	0.12		23.893
																0.000
0.28	0.13	0.077	0.089								0.49			0.054		0.032
												4		0.068		0.120
0.25	0.21											73	15	2.2		2.868
												0.5	0.054	0.075		0.019
																0.000
																0.000
																0.000
																0.000
95	57	91	63	89	200	520	78	42	58	1800	21	590	150	72	180	120.2
	63	38	18	14	540	120				350		520	380	61	78	63.8



Excavation # 1

