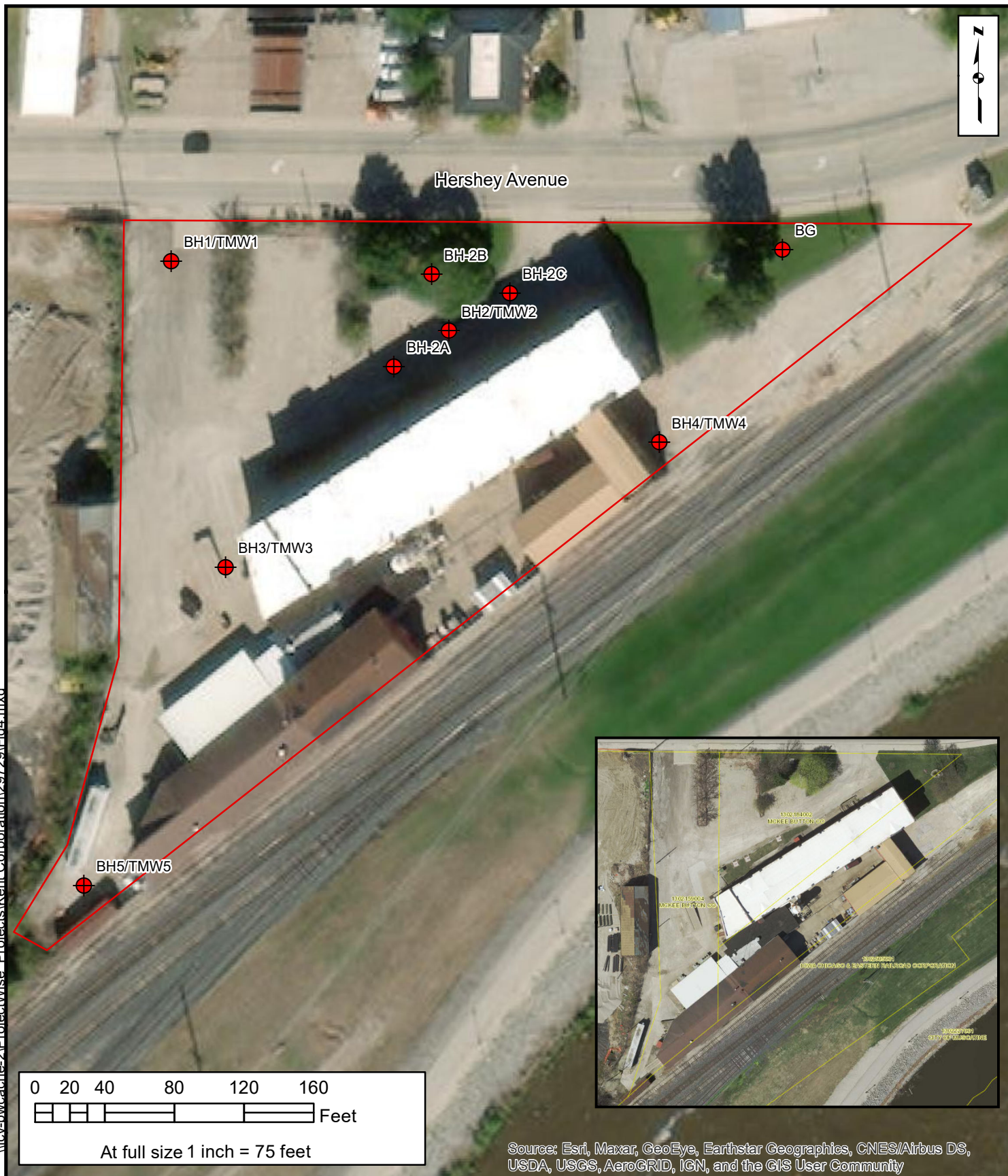


\\ncv-pwcache-2\ProjectWise\_P\Projects\Kent Corporation\29729\Fig4.mxd



Project No. 29729  
October 2020



### Legend

- Boring Location
  - Approximate Property Location
- Note: approximate property boundary based on site observations;  
parcel information obtained from the Muscatine County GIS site shown on inset.

**BORING LOCATIONS**  
**1000 Hershey Avenue**  
**Muscatine, Iowa**  
**Figure 4**