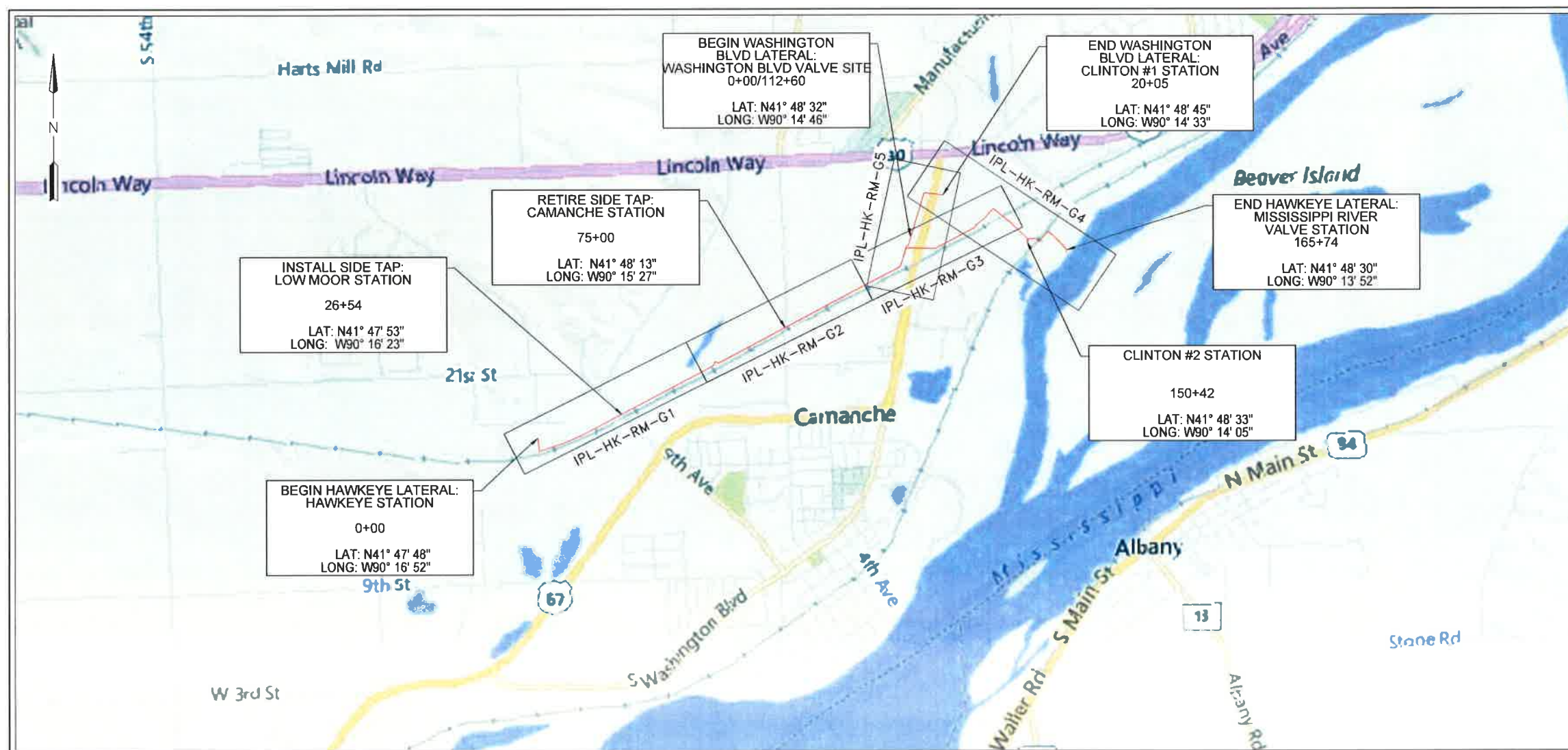




CON 12-15
Doc #33673

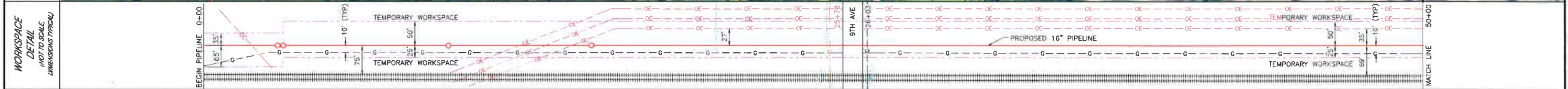
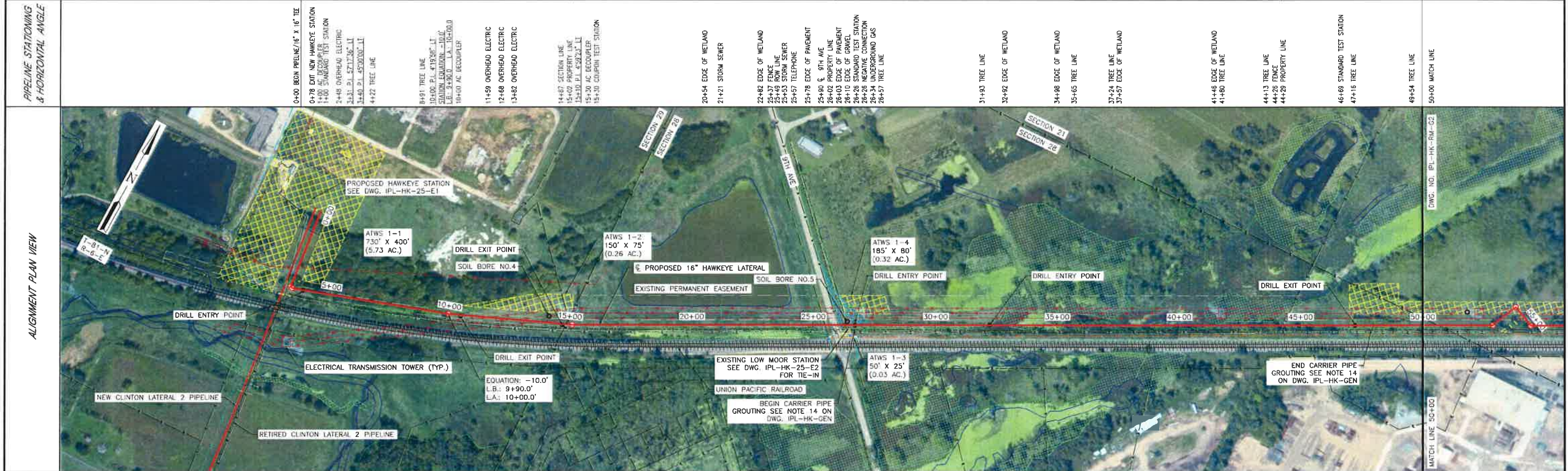
Interstate Power and Light Company (IP&L)

16"/12" HAWKEYE LATERAL PROJECT CLINTON COUNTY, IOWA ISSUED FOR BID

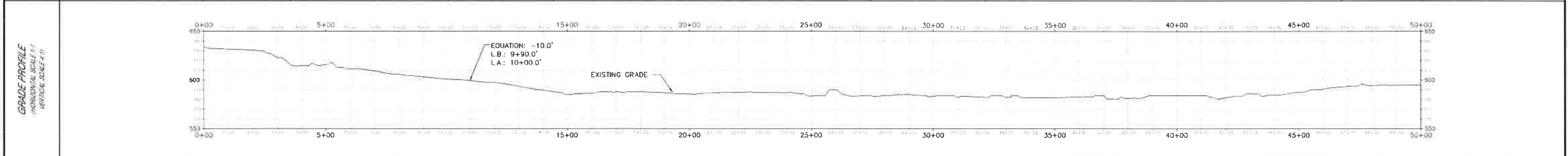


PREPARED BY: ENEngineering 28100 TORCH PARKWAY WARRENVILLE, IL 60555 TEL. 630.353.4000 FAX 630.353.7777 WWW.ENENGINEERING.COM	16"/12" HAWKEYE LATERAL COVER PAGE / LOCATION MAP	
	CLINTON COUNTY	IOWA
ISSUED FOR BID		
REV. 0	06/20/17	1 OF 124

PROPERTY OWNERS	CROSS ROADS LAND DEVELOPMENT, L.L.C.	CROSS ROADS LAND DEVELOPMENT, L.L.C.	HARING, GARY D. & CLARA J.	IPSCO TUBULARS INC.
PIPELINE STATIONING & HORIZONTAL ANGLE	PARCEL 1019696450 1501'	PARCEL 1019581000 1100'	PARCEL 1019582100 1827'	PARCEL 1019080000 571'



DETAIL	0+00	4+41	9+70	15+50	20+26	32+70	46+69	50+00
NEW PIPE	1	1	1	1	1	1	1	1
DESIGN FACTOR	0.5	0.5	0.5	0.5	0.5	0.5	0.5	0.5
COATING	A	B	A	B	A	B	A	A
LENGTH	441'	529' (529.6' TRUE LENGTH)	550'	1095' (1100.0' TRUE LENGTH)	644'	1399' (1401.6' TRUE LENGTH)	331'	
CLASS LOCATION	3	3	3	3	3	3	3	



DESIGN PRESSURE: 720 P.S.I.G.
 MAOP: 600 P.S.I.G.
 DESIGN FACTOR: 0.50
 PIPING HYDROSTATIC TEST NOTES:
 CONTRACTOR SHALL HYDROSTATIC TEST HAWKEYE PIPELINE TO:
 1440 P.S.I.G. MAX (2 X DESIGN PRESSURE)
 1080 P.S.I.G. MIN. (1.5 X DESIGN PRESSURE)
 DURATION: 8 HOURS MIN.

DESIGNED IN ACCORDANCE WITH TITLE 49-PART 92 OF MINIMUM FEDERAL SAFETY STANDARDS AND OPTC GUIDE FOR GAS TRANSMISSION AND DISTRIBUTION PIPING SYSTEMS, LATEST EDITION.

PREPARED BY:
ENEngineering
 28100 TORCH PARKWAY
 WARRENVILLE, IL 60566
 TEL 830-363-4000
 FAX 830-363-7777
 WWW.ENENGINEERING.COM

PIPE SUMMARY	COATING SUMMARY	REFERENCE DRAWINGS
1 = 16.00" O.D. X 0.375" W.T. 5LX52 2 = 8.625" O.D. X 0.322" W.T. 5LX52 3 = 12.750" O.D. X 0.375" W.T. 5LX52	A = FUSION BONDED EPOXY (12-20 MILS) B = FUSION BONDED EPOXY (12-20 MILS) & POWERCRETE (20-40 MILS)	IPL-HK-WC-E2 MONITORING WELLS HDD CROSSING IPL-HK-WC-E1 TYPICAL WETLAND/STREAM HDD CROSSING IPL-HK-HC-E1 9TH AVENUE HDD CROSSING IPL-HK-RM-G2 ROUTING OF 16" HAWKEYE LATERAL, STA. 50+00 TO STA. 95+00 IPL-HK-25-E2 LOW MOOR DRS. STATION SITE PLAN IPL-HK-25-E1 HAWKEYE STATION SITE PLAN

REVISIONS
ISSUED FOR BIDDING AR 05/20/17 BP HW/EW AJ

ALLIANT ENERGY
 Interstate Power and Light Company (IPL)

ROUTING OF 16" HAWKEYE LATERAL
 STA. 00+00 TO STA. 50+00

CLINTON COUNTY, IOWA

SCALE: 1" = 200'

PROJ: 088839

DATE ISSUED: 05/30/16

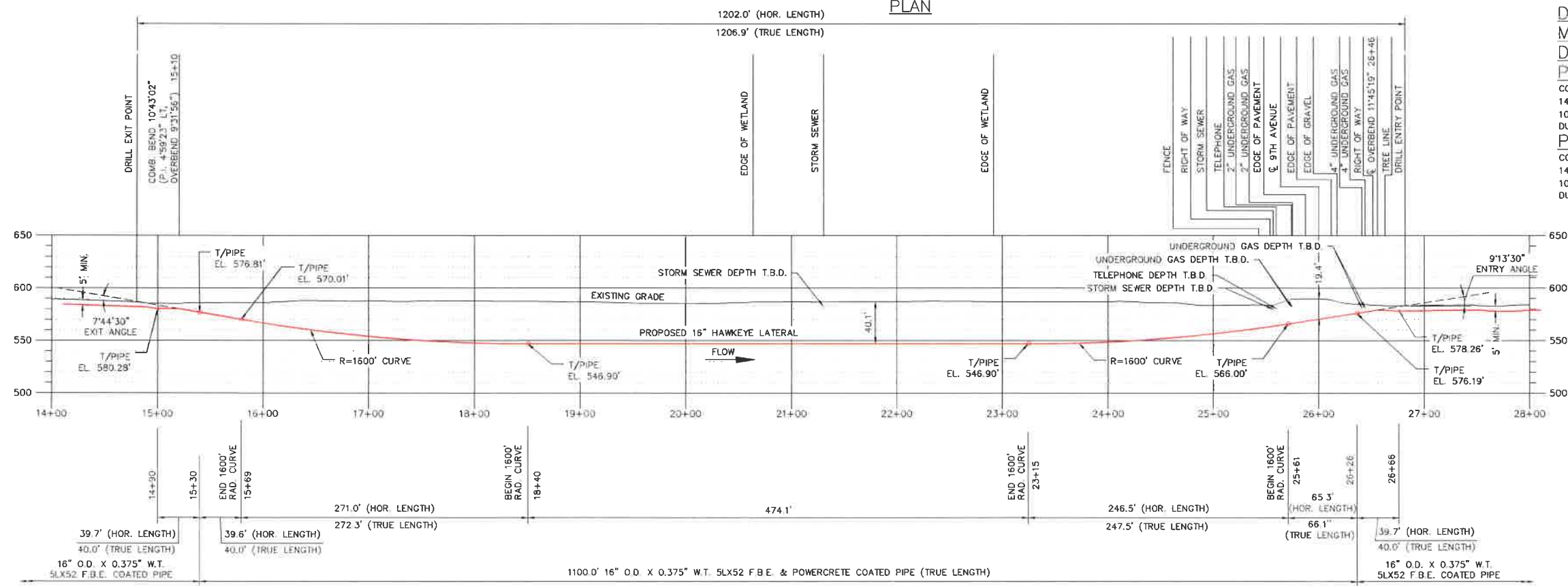
IPL-HK-RM-G1

6 OF 124

I:\Projects\Alliant\VE3305.006 - Working Drawings\Pipeline\IPL-HK-RM-G.dwg 6/19/2017 4:31 PM Sean Brown



PLAN



PROFILE

DESIGN PRESSURE: 720 P.S.I.G.
 MAOP: 600 P.S.I.G.
 DESIGN FACTOR: 0.50
 PIPING HYDROSTATIC PRE-TEST NOTES:
 CONTRACTOR SHALL HYDROSTATIC TEST HDD PIPE TO:
 1440 P.S.I.G. MAX. (2 X DESIGN PRESSURE),
 1080 P.S.I.G. MIN. (1.5 X DESIGN PRESSURE)
 DURATION: 4 HOURS MIN.
 PIPING HYDROSTATIC TEST NOTES:
 CONTRACTOR SHALL HYDROSTATIC TEST HAWKEYE LATERAL TO:
 1440 P.S.I.G. MAX. (2 X DESIGN PRESSURE),
 1080 P.S.I.G. MIN. (1.5 X DESIGN PRESSURE)
 DURATION: 8 HOURS MIN.

NO.	DATE	ISSUED BY	DATE	BY	DESCRIPTION	ENGR.	DATE	BY	APPROVED
0	06/20/17	AJ			ISSUED FOR BID	HW	06/19/17	AJ	

ENEngineering
 28100 TORCH PARKWAY
 WARRENVILLE, IL 60555
 TEL. 630.353.4000
 FAX 630.353.7777
 WWW.ENENGINEERING.COM

DWG NUMBER	TITLE
IPL-HK-RM-G1	ROUTING OF 16" HAWKEYE LATERAL STA. 0+00 TO 50+00

ALLIANT ENERGY
 Interstate Power and Light Company (IP&L)

ISSUED FOR BID	06/20/17	PROJECT I.D.	088839
ISSUED FOR CONSTRUCTION		DRAWING SIZE	D

**16"12" HAWKEYE LATERAL
 9th AVENUE HDD CROSSING
 PLAN AND PROFILE**

CLINTON COUNTY IOWA

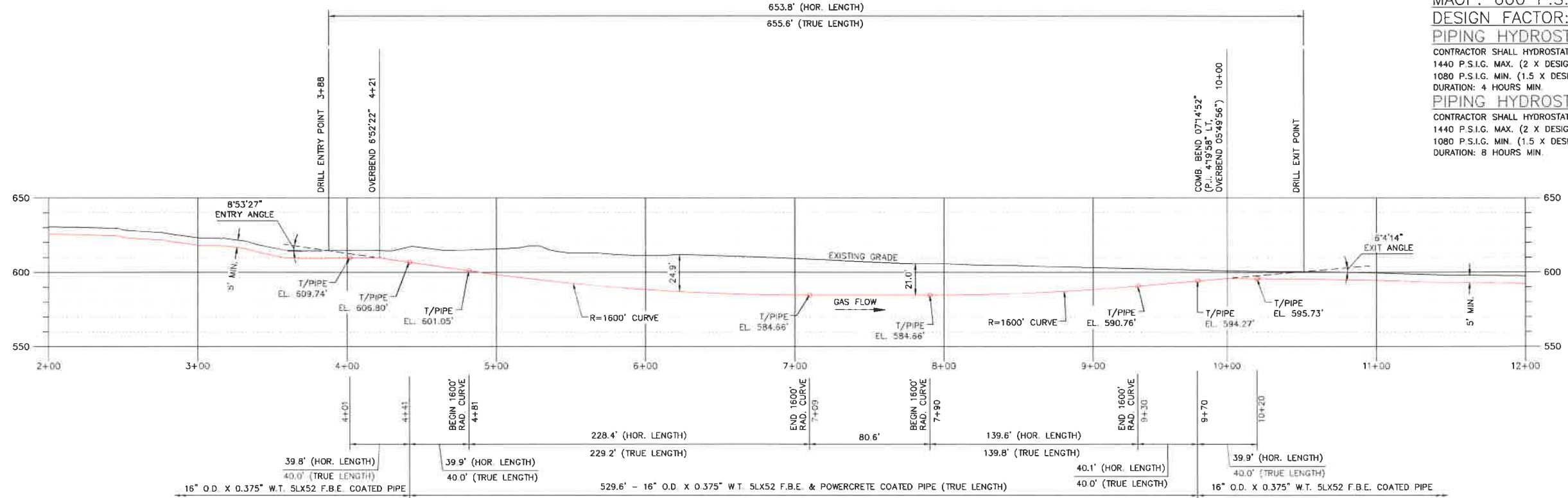
SCALE	1" = 60'	DATE	01/26/17
FILE NO.	IPL-HK-HC-E1		
PROJECT ENGR. / PROJECT MGR. EW/HW		DATE AJ	

13 OF 124



PLAN

653.8' (HOR. LENGTH)
655.6' (TRUE LENGTH)



PROFILE

DESIGN PRESSURE: 720 P.S.I.G.
MAOP: 600 P.S.I.G.

DESIGN FACTOR: 0.50
PIPING HYDROSTATIC PRE-TEST NOTES:
CONTRACTOR SHALL HYDROSTATIC TEST HDD PIPE TO:
1440 P.S.I.G. MAX. (2 X DESIGN PRESSURE),
1080 P.S.I.G. MIN. (1.5 X DESIGN PRESSURE)
DURATION: 4 HOURS MIN.
PIPING HYDROSTATIC TEST NOTES:
CONTRACTOR SHALL HYDROSTATIC TEST HAWKEYE LATERAL TO:
1440 P.S.I.G. MAX. (2 X DESIGN PRESSURE),
1080 P.S.I.G. MIN. (1.5 X DESIGN PRESSURE)
DURATION: 8 HOURS MIN.

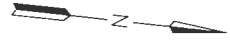
NO.	DATE	BY	DATE	BY	DESCRIPTION	ENGR.	DATE	BY
0	06/20/17	AJ			ISSUED FOR BID	HW	06/19/17	AJ
REVISIONS								

ENEngineering
28100 TORCH PARKWAY
WARRENVILLE, IL 60555
TEL. 630.353.4000
FAX 630.353.7777
WWW.ENENGINEERING.COM

IPL-HK-RM-G1	ROUTING OF 16" HAWKEYE LATERAL STA. 0+00 TO 50+00
DWG NUMBER	TITLE
REFERENCE DRAWINGS	

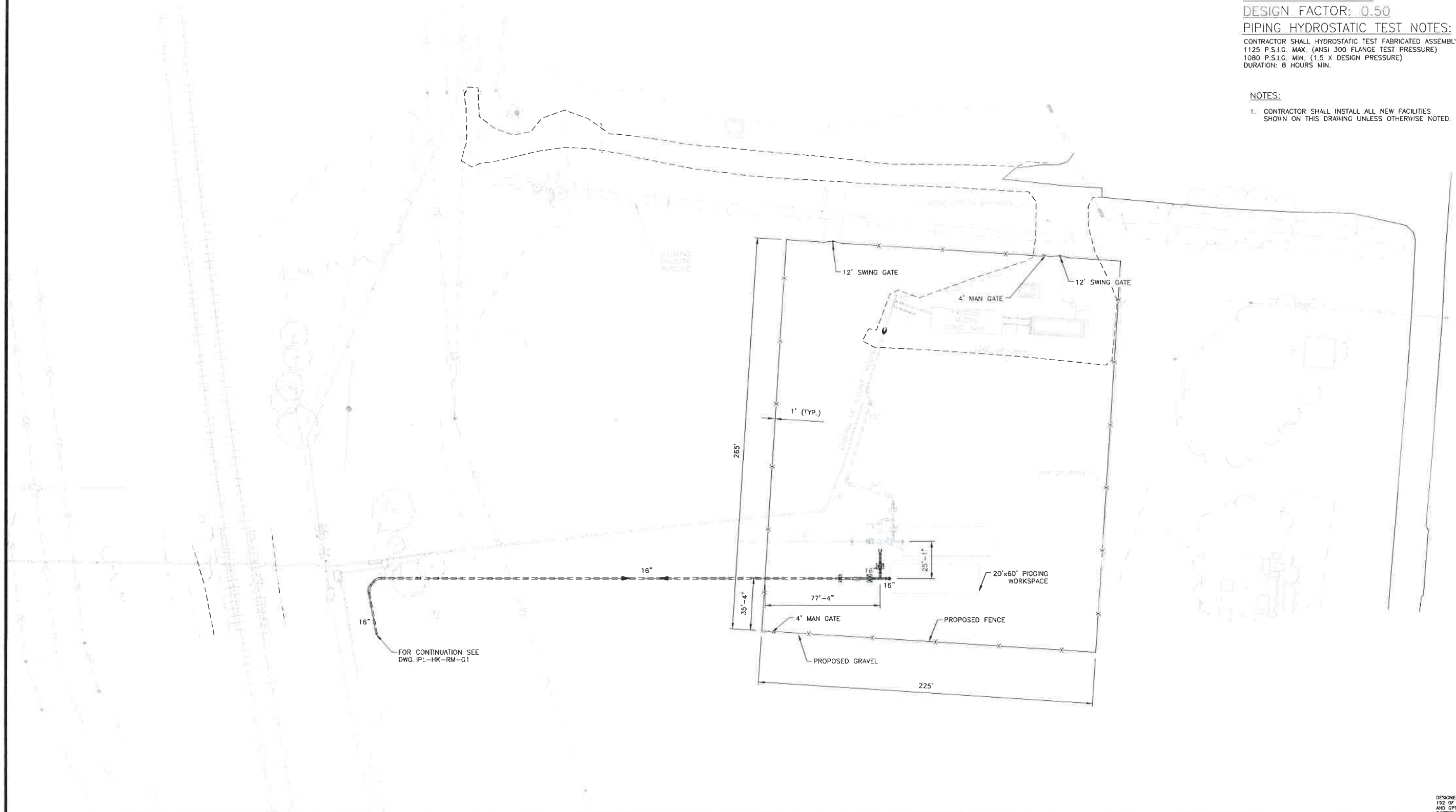
ALLIANT ENERGY			
Interstate Power and Light Company (IP&L)			
X	ISSUED FOR BID	06/20/17	PROJECT I.D. 088839
	ISSUED FOR CONSTRUCTION		DRAWING SIZE D

16" / 12" HAWKEYE LATERAL MONITORING WELL HDD CROSSING PLAN AND PROFILE			
CLINTON COUNTY IOWA			
SCALE	1" = 30'	DATE	06/05/17
PROJECT ENGR. / PROJECT MGR.	EW / HW	PROJECT ENGR. / PROJECT MGR.	AR / BP
IPL-HK-WC-E2		12 OF 124	



DESIGN PRESSURE: 720 P.S.I.G.
 MAOP: 600 P.S.I.G.
 DESIGN FACTOR: 0.50
 PIPING HYDROSTATIC TEST NOTES:
 CONTRACTOR SHALL HYDROSTATIC TEST FABRICATED ASSEMBLY TO:
 1125 P.S.I.G. MAX. (ANSI 300 FLANGE TEST PRESSURE)
 1080 P.S.I.G. MIN. (1.5 X DESIGN PRESSURE)
 DURATION: 8 HOURS MIN.

NOTES:
 1. CONTRACTOR SHALL INSTALL ALL NEW FACILITIES SHOWN ON THIS DRAWING UNLESS OTHERWISE NOTED.



DESIGNED IN ACCORDANCE WITH TITLE 43-PART 192 OF MINIMUM FEDERAL SAFETY STANDARDS AND OPTIC GUIDE FOR GAS TRANSMISSION AND DISTRIBUTION PIPING SYSTEMS, LATEST EDITION

DATE	BY	DATE	BY	DESCRIPTION	ENGR	DATE	BY
06/20/17	AJ			ISSUED FOR BID	EW	06/19/17	AJ

ENEngineering
 28100 TORCH PARKWAY
 WARRENVILLE, IL 60555
 TEL. 630.353.4000
 FAX 630.353.7777
 WWW.ENENGINEERING.COM

DWG NUMBER	TITLE
IPL-HK-37-E1	HAWKEYE STATION PIPING PLAN
IPL-HK-RM-G1	ROUTING OF 16" HAWKEYE LATERAL STA. 0+00 TO 50+00

 Interstate Power and Light Company (IP&L)		<input checked="" type="checkbox"/> ISSUED FOR BID	06/20/17	PROJECT I.D.	088839
			ISSUED FOR CONSTRUCTION		DRAWING SIZE

16"/12" HAWKEYE LATERAL HAWKEYE STATION SITE PLAN		CLINTON COUNTY		IOWA
		DRAWN: PS CHK. BY: BP	SCALE: 1/32"=1'-0" DATE: 07/07/16	PROJECT ENGR. / PROJECT MGR: EW/HW AJ