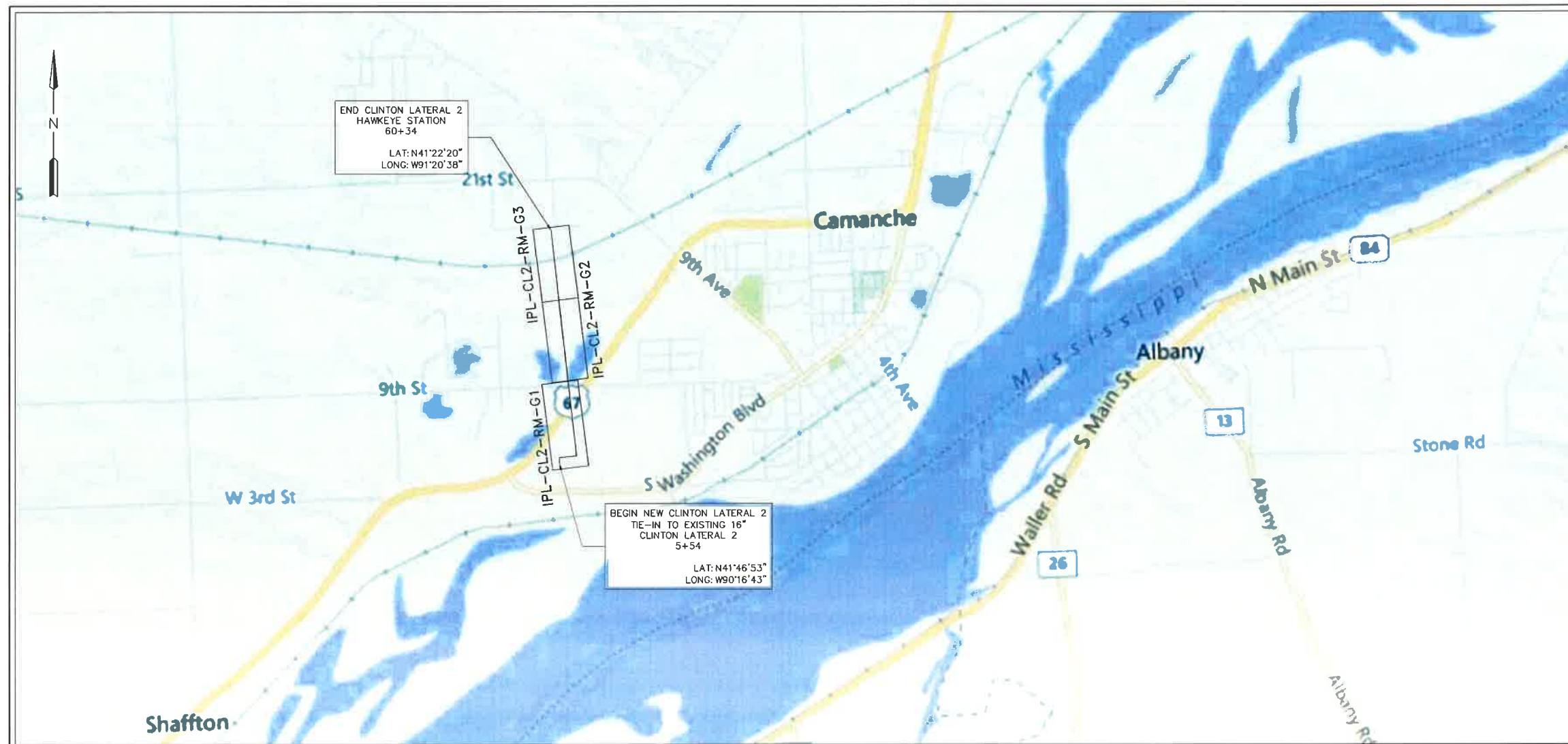




Interstate Power and Light Company (IP&L)

16" CLINTON LATERAL 2 PROJECT CLINTON COUNTY, IOWA ISSUED FOR BID

CON 12-15
Doc #33671



PREPARED BY:

ENEngineering

28100 TORCH PARKWAY
WARRENVILLE, IL 60555
TEL. 630.353.4000
FAX 630.353.7777
WWW.ENENGINEERING.COM

**16" CLINTON LATERAL 2
COVER PAGE / LOCATION MAP**

CLINTON COUNTY

IOWA

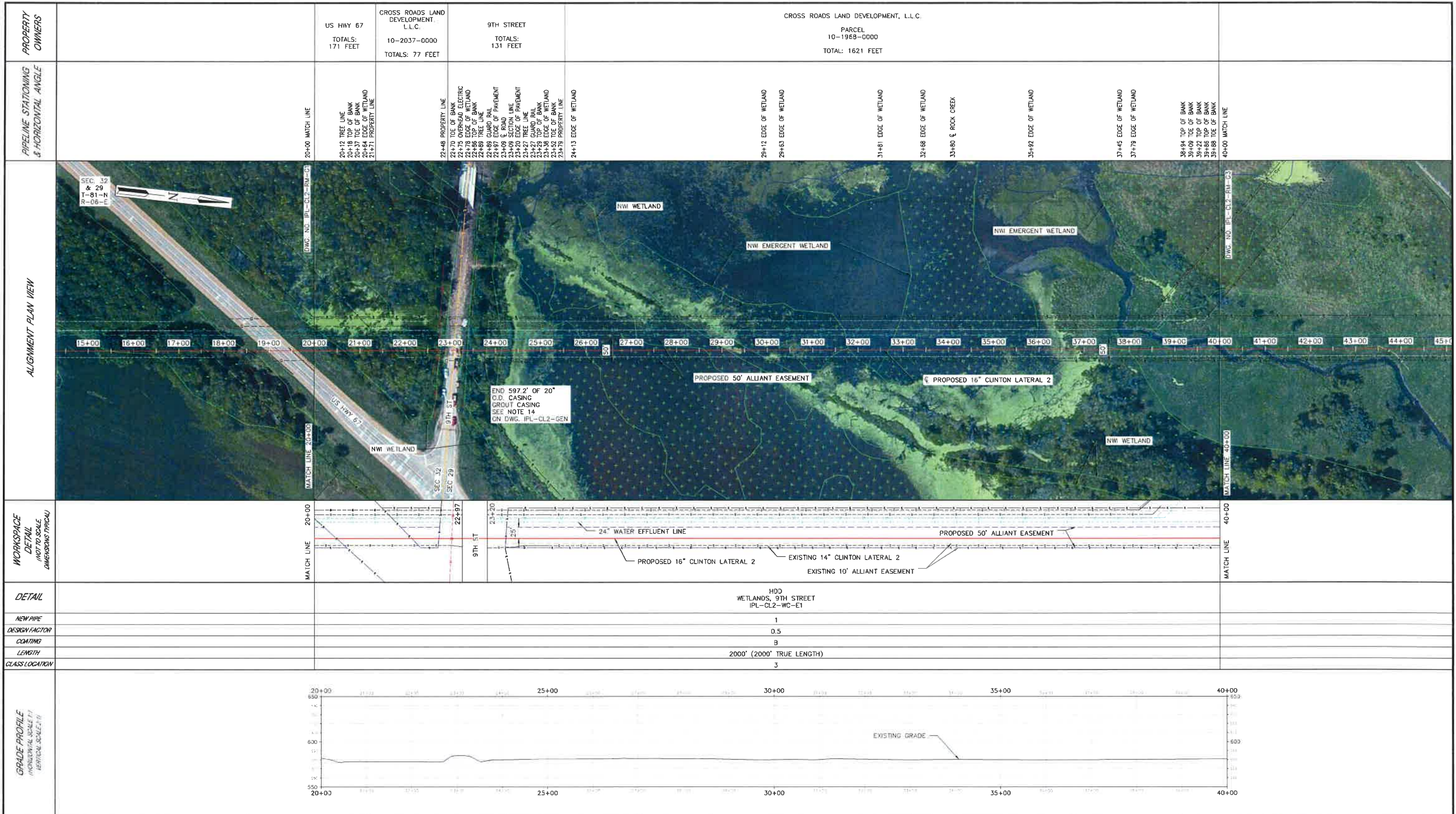
ISSUED FOR BID

REV. 0

06/20/17

1 OF 28

I:\Projects\Alliant\F63303\006 - Working Drawings\Pipeline\IPL-CL2-RM-G1.dwg
 6/19/2017 12:02 PM Sean Brown



DESIGN PRESSURE: 720 P.S.I.G.
MAOP: 600 P.S.I.G.
DESIGN FACTOR: 0.50
PIPING HYDROSTATIC TEST NOTES:
 CONTRACTOR SHALL HYDROSTATIC TEST CLINTON LATERAL 2 PIPELINE TO:
 1440 P.S.I.G. MAX. (2 X DESIGN PRESSURE)
 1080 P.S.I.G. MIN. (1.5 X DESIGN PRESSURE)
 DURATION: 8 HOURS MIN.

DESIGNED IN ACCORDANCE WITH TITLE 46-PART 92 OF MINIMUM FEDERAL SAFETY STANDARDS AND OPTC GUIDE FOR GAS TRANSMISSION AND DISTRIBUTION PIPING SYSTEMS, LATEST EDITION.
 PREPARED BY:
ENEngineering
 28100 TORCH PARKWAY
 WARRENVILLE, IL 60555
 TEL 830-363-4000
 FAX 830-363-7777
 WWW.ENENGINEERING.COM

PIPE SUMMARY	1 = 16.00" O.D. X 0.375" W.T. 5LX52
COATING SUMMARY	A = FUSION BONDED EPOXY (12-20 MILS) B = FUSION BONDED EPOXY (12-20 MILS) & POWERCRETE (20-40 MILS)

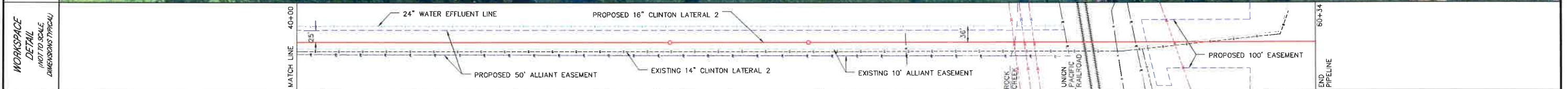
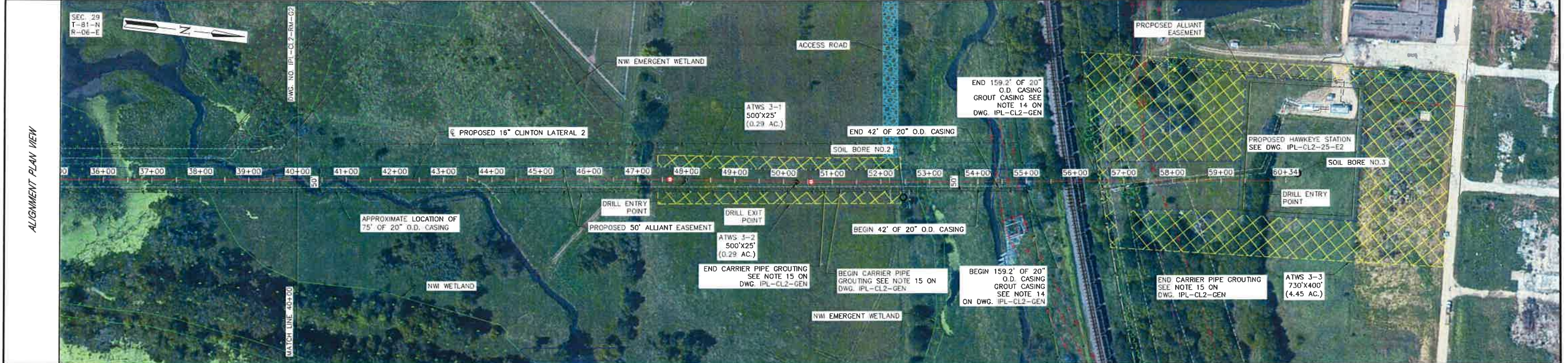
REFERENCE DRAWINGS	IPL-CL2-WC-E1 HWY 67 & 9TH STREET HDD PLAN AND PROFILE IPL-CL2-RM-G3 ROUTING OF 16" CLINTON LATERAL 2 STA. 40+00 TO 60+34 IPL-CL2-RM-G1 ROUTING OF 16" CLINTON LATERAL 2 STA. 5+54 TO 20+00
---------------------------	---

REVISIONS	ISSUED FOR BID 0 BK 06/23/17 BP EW/HW AJ REV DRAWN BY DATE REVISED CHECKED BY PROJECT ENG APPROVED BY
------------------	--

ALLIANT ENERGY
 Interstate Power and Light Company (IPL)
 ROUTING OF 16" CLINTON LATERAL 2
 STA. 20+00 TO STA. 40+00
 CLINTON COUNTY, IOWA
 SCALE: 1"=100' PROJ: 088839
IPL-CL2-RM-G2
 5 OF 28

NOTES

PROPERTY OWNERS	CROSS ROADS LAND DEVELOPMENT, L.L.C. PARCEL 10-1968-0000 TOTAL: 1497 FEET	UNION PACIFIC RAILROAD TOTALS: 152 FEET	CROSS ROADS LAND DEVELOPMENT, L.L.C. PARCEL 10-1969-6450 TOTALS: 385 FEET
PIPELINE STATIONING & HORIZONTAL ANGLE	40+00 MATCH LINE 40+04 ϵ ROCK CREEK 40+08 TOE OF BANK 40+12 TOP OF BANK 40+71 TOP OF BANK 40+76 TOE OF BANK 40+84 TOE OF BANK 40+89 TOP OF BANK 43+64 FENCE 46+02 EDGE OF WETLAND 47+00 EDGE OF WETLAND 47+66 PL. 0110117-BL 47+70 STANDARD TEST STATION 50+57 PL. 0110117-BL 52+18 FENCE 52+19 TOE OF BANK 52+20 TOE OF BANK 52+95 EDGE OF WETLAND 52+96 TOE OF BANK 54+23 TOP OF BANK 54+28 ϵ ROCK CREEK 54+35 TOE OF BANK 54+40 TOP OF BANK 54+41 OVERHEAD POWER LINE 54+62 OVERHEAD POWER LINE 54+82 OVERHEAD POWER LINE 54+97 PROPERTY LINE 55+20 TOE OF BANK 55+24 TOP OF BANK 55+44 TOP OF BANK 55+62 TOE OF BANK 55+71 TREE LINE 55+74 TOE OF BANK 55+78 TOP OF BANK 56+06 RAILROAD BANK 56+08 TOE OF BANK 56+12 TOE OF BANK 56+17 TOP OF BANK 56+47 TOP OF BANK 56+49 PROPERTY LINE 56+50 FENCE 56+67 TOE OF BANK 56+86 TOP OF BANK 57+68 OVERHEAD POWER LINE 57+97 EXISTING 14" CLINTON LAT. 2 60+10 STANDARD TEST STATION 60+34 END PIPELINE		



DETAIL	HDD WETLANDS, ROCK CREEK IPL-CL2-WC-E1	47+45	50+77	HDD ROCK CREEK & U.P. RAILROAD IPL-CL2-WC-E2	59+43
NEW PIPE	1		1	1	1
DESIGN FACTOR	0.5		0.5	0.5	0.5
COATING	B		A	B	A
LENGTH	746' (747.6' TRUE LENGTH)		331'	866' (873.0' TRUE LENGTH)	47'
CLASS LOCATION	3		3	3	3



DESIGN PRESSURE: 720 P.S.I.G.
MAOP: 600 P.S.I.G.
DESIGN FACTOR: 0.50
PIPING HYDROSTATIC TEST NOTES:
CONTRACTOR SHALL HYDROSTATIC TEST CLINTON LATERAL 2 PIPELINE TO:
1440 P.S.I.G. MAX. (2 X DESIGN PRESSURE)
1080 P.S.I.G. MIN. (1.5 X DESIGN PRESSURE)
DURATION: 8 HOURS MIN.

DESIGNED IN ACCORDANCE WITH TITLE 49-PART 192 OF MINIMUM FEDERAL SAFETY STANDARDS AND OPTIC GUIDE FOR GAS TRANSMISSION AND DISTRIBUTION PIPING SYSTEMS, LATEST EDITION.
PREPARED BY:
ENEngineering
28100 TORCH PARKWAY
WARRENVILLE, IL 60556
TEL 630-363-4000
FAX 630-363-7777
WWW.ENENGINEERING.COM

PIPE SUMMARY	1 = 16.00" O.D. X 0.375" W.T. 5LX52
COATING SUMMARY	A = FUSION BONDED EPOXY (12-20 MILS) B = FUSION BONDED EPOXY (12-20 MILS) & POWERCRETE (20-40 MILS)

REFERENCE DRAWINGS	IPL-CL2-25-E2 HAWKEYE STATION SITE PLAN IPL-CL2-WC-E1 HWY 67 & 9TH STREET HDD PLAN AND PROFILE IPL-CL2-WC-E2 ROCK CREEK & U.P. RAILROAD HDD PLAN AND PROFILE IPL-CL2-RM-G2 ROUTING OF 16" CLINTON LATERAL 2 STA. 20+00 TO 40+00
REVISIONS	ISSUED FOR BID REV. 01/23/17 DRAWN BY BK DATE REVISED 06/23/17 CHECKED BY BP PROJECT ENG. EW/HW APPROVED BY AJ

ALLIANT ENERGY
Interstate Power and Light Company (IPL)
ROUTING OF 16" CLINTON LATERAL 2
STA. 40+00 TO STA. 60+34
CLINTON COUNTY, IOWA

DRAWN BY	AR	SCALE	1"=100'	PROJ.	O88839
CHECKED BY	BP				
PROJECT ENG.	EW/HW				
APPROVED BY	AJ				
DATE ISSUED	07/22/16				

IPL-CL2-RM-G3
6 OF 23

I:\Projects\Alliant\F63303 00\6 - Working Drawings\Pipeline\IPL-CL2-RM-G1.dwg
6/20/2017 9:14 AM Sean Brown



PLAN

PIPING HYDROSTATIC TEST NOTES:

CONTRACTOR SHALL HYDROSTATIC TEST CLINTON LATERAL 2 TO:
 1440 P.S.I.G. MAX. (2 X DESIGN PRESSURE),
 1080 P.S.I.G. MIN. (1.5 X DESIGN PRESSURE)
 DURATION: 8 HOURS MIN.

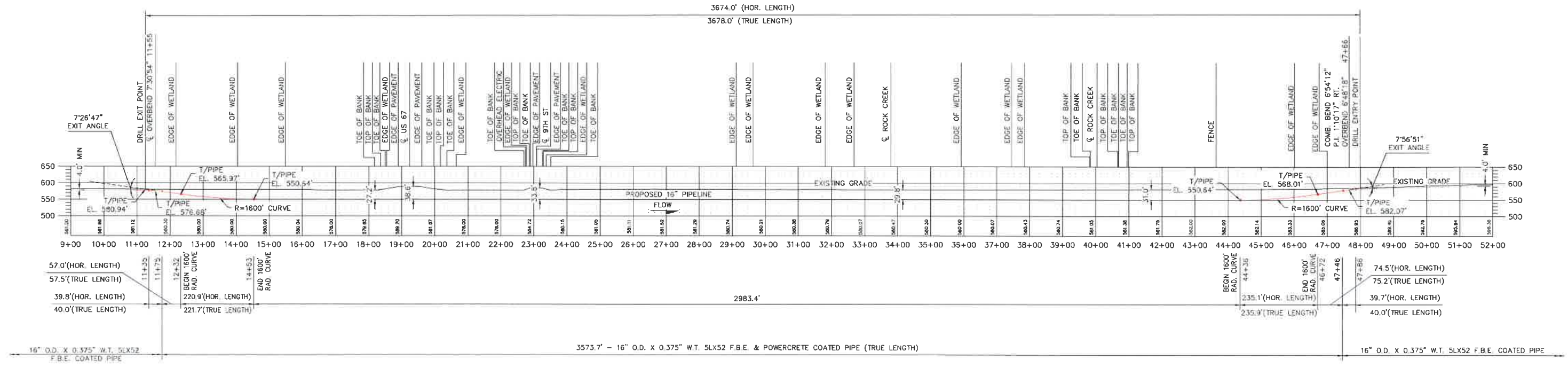
DESIGN PRESSURE: 720 P.S.I.G.

MAOP: 600 P.S.I.G.

DESIGN FACTOR: 0.50

PIPING HYDROSTATIC PRE-TEST NOTES:

CONTRACTOR SHALL HYDROSTATIC TEST HDD PIPE TO:
 1440 P.S.I.G. MAX. (2 X DESIGN PRESSURE),
 1080 P.S.I.G. MIN. (1.5 X DESIGN PRESSURE)
 DURATION: 4 HOURS MIN.



PROFILE

DESIGNED IN ACCORDANCE WITH TITLE 49—PART 192 OF AMERICAN FEDERAL SAFETY STANDARDS AND OPTIC GUIDE FOR GAS TRANSMISSION AND DISTRIBUTION PIPING SYSTEMS, LATEST EDITION

DATE	BY	DATE	BY	DESCRIPTION	ENGR.	DATE	BY
06/20/17	EW			ISSUED FOR BID	EW	06/19/17	AJ

ENEngineering
 28100 TORCH PARKWAY
 WARRENVILLE, IL 60555
 TEL. 630.353.4000
 FAX 630.353.7777
 WWW.ENENGINEERING.COM

DWG NUMBER	TITLE
IPL-CL2-RM-G3	ROUTING OF 16" CLINTON LATERAL 2, STA. 40+00 TO 60+34
IPL-CL2-RM-G2	ROUTING OF 16" CLINTON LATERAL 2, STA. 20+00 TO 40+00
IPL-CL2-RM-G1	ROUTING OF 16" CLINTON LATERAL 2, STA. 5+54 TO 20+00

ALLIANT ENERGY
 Interstate Power and Light Company (IP&L)

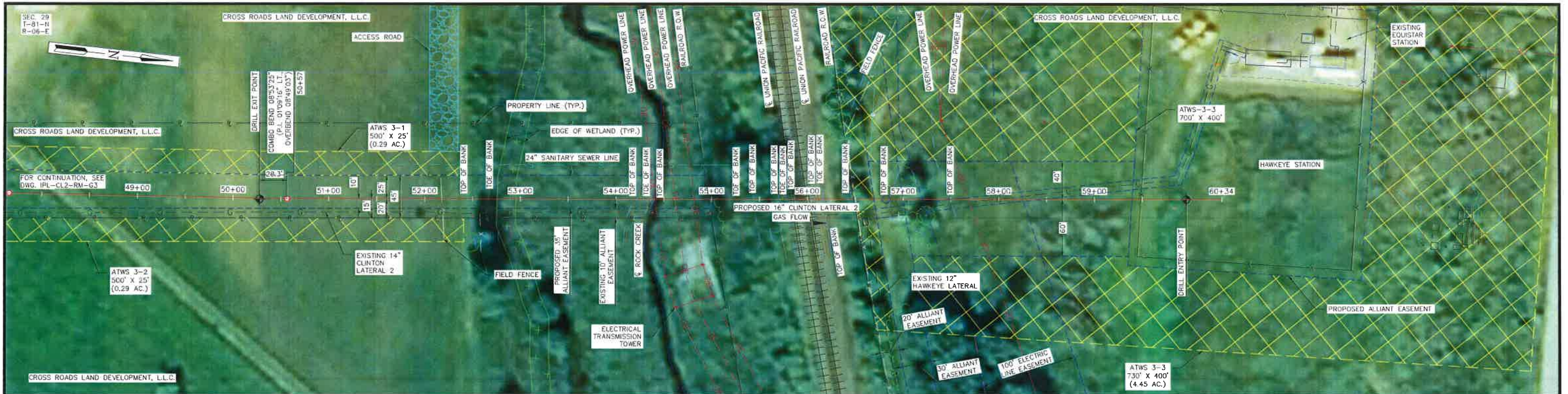
**16" CLINTON LATERAL 2
 HWY 67 & 9TH STREET HDD
 PLAN AND PROFILE**

CLINTON COUNTY IOWA

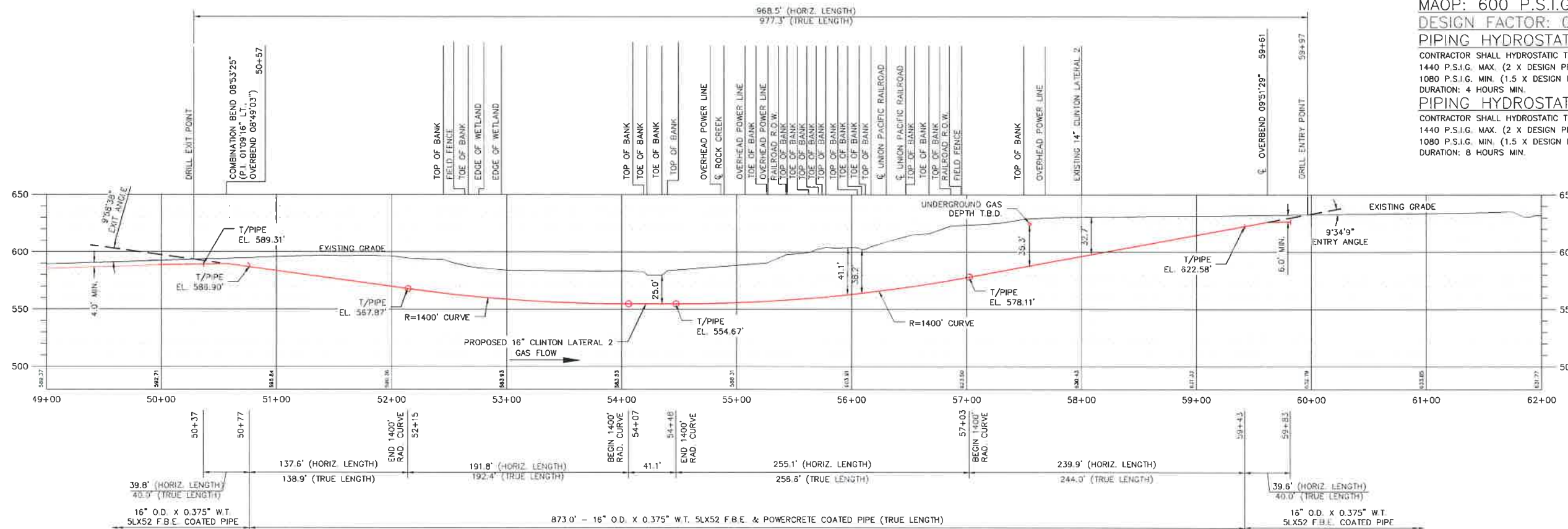
ISSUED FOR BID	06/20/17	PROJECT I.D.	088839
ISSUED FOR CONSTRUCTION		DRAWING SIZE	D

SCALE: 1"=50'
 DATE: 06/24/16

IPL-CL2-WC-E1
 8 OF 28



PLAN



PROFILE

DESIGN PRESSURE: 720 P.S.I.G.
 MAOP: 600 P.S.I.G.
 DESIGN FACTOR: 0.50
 PIPING HYDROSTATIC PRE-TEST NOTES:
 CONTRACTOR SHALL HYDROSTATIC TEST HDD PIPE TO:
 1440 P.S.I.G. MAX. (2 X DESIGN PRESSURE),
 1080 P.S.I.G. MIN. (1.5 X DESIGN PRESSURE)
 DURATION: 4 HOURS MIN.
 PIPING HYDROSTATIC TEST NOTES:
 CONTRACTOR SHALL HYDROSTATIC TEST CLINTON LATERAL 2 TO:
 1440 P.S.I.G. MAX. (2 X DESIGN PRESSURE),
 1080 P.S.I.G. MIN. (1.5 X DESIGN PRESSURE)
 DURATION: 8 HOURS MIN.

DESIGNED IN ACCORDANCE WITH TITLE 49-PART 192 OF AMERICAN FEDERAL SAFETY STANDARDS AND OPTIC GUIDE FOR GAS TRANSMISSION AND DISTRIBUTION PIPING SYSTEMS, LATEST EDITION.

DATE	BY	DATE	BY	DESCRIPTION
06/20/17	EW	06/19/17	AJ	ISSUED FOR BID
REVISIONS				

ENEngineering
 28100 TORCH PARKWAY
 WARRENVILLE, IL 60555
 TEL. 630.353.4000
 FAX 630.353.7777
 WWW.ENENGINEERING.COM

DWG NUMBER	TITLE
IPL-CL2-RM-G3	ROUTING OF 16" CLINTON LATERAL 2, STA. 40+00 TO 60+34
REFERENCE DRAWINGS	

ALLIANT ENERGY
 Interstate Power and Light Company (IP&L)

ISSUED FOR BID	06/20/17	PROJECT I.D.	088839
ISSUED FOR CONSTRUCTION		DRAWING SIZE	D

**16" CLINTON LATERAL 2
 ROCK CREEK & U.P. RAILROAD HDD
 PLAN AND PROFILE**

CLINTON COUNTY IOWA

SCALE	1"=50'	DATE	06/24/16
DRAWN	AR	CHK. BY	BP
PROJECT ENGR. / PROJECT MOR	EW/HW	FILE NO.	IPL-CL2-WC-E2
			9 OF 28