



ENGINEERS

CON 12-15
Doc # 26234

1444 Illinois Street
Des Moines, Iowa 50314

Phone 515-221-9832 Fax 515-222-2625

www.mpsengineers.com

Email: mps_engineers@hotmail.com

April 14, 2012

Mr. Jim Kacer
Iowa Department of Natural Resources
Contaminated Sites Section
Wallace State Office Building
Des Moines, Iowa 50319

RE: AL'S CORNER OIL COMPANY
12053 HIGHWAY 71
CARROLL, IOWA

Dear Mr. Kacer:

MPS Engineers is writing this letter to request closure for the above reference site. MPS Engineers has been conducting semi-annual groundwater monitoring at this site since March 2006. Groundwater concentrations have shown steady and declining trend. The most recent sampling event in March 2012 showed maximum groundwater benzene concentration of 305 ug/L. We are, therefore, requesting that this site be granted closure at this time.

If you need additional information, please contact our office at (515) 221-9832.

Sincerely,
MPS ENGINEERS

Amit A. Pradhan, PE
Environmental Engineer

Cc: Rollin Tiefenthaler, Al's Corner Oil Company

07083 Pm 4:00 04/23/12



ENGINEERS

1444 Illinois Street
Des Moines, Iowa 50314

Phone 515-221-9832 Fax 515-222-2625

www.mpsengineers.com

Email: mps_engineers@hotmail.com

April 14, 2012

Mr. Jim Kacer
Iowa Department of Natural Resources
Contaminated Sites Section
Wallace State Office Building
Des Moines, Iowa 50319

RE: SITE MONITORING RESULTS
AL'S CORNER OIL COMPANY
12053 HIGHWAY 71
CARROLL, IOWA

Dear Mr. Kacer:

MPS Engineers is enclosing with this letter results of groundwater sampling at the above-referenced site.

SITE ACTIVITIES

Groundwater sampling was conducted at this site on March 5, 2012. The following monitoring wells were sampled during this sampling event: MW-1, MW-4, MW-6, MW-7, MW-19N, MW-201, MW-8, and MW-10. Results of Groundwater sampling have been tabulated on the attached spread sheet.

DATA ANALYSIS

Groundwater Contamination Plume Maps and Groundwater Flow Direction Maps were developed based upon the results of this sampling event. These maps and laboratory data sheets are provided as attachment to this letter.

If you need additional information, please contact our office at (515) 221-9832.

Sincerely,
MPS ENGINEERS

Amit A. Pradhan, PE
Environmental Engineer

Cc: Rollin Tiefenthaler, Al's Corner Oil Company
File #1516

07084 PM 4:00 04/23/12

AL'S CORNER OIL COMPANY
12053 HIGHWAY 71, CARROLL, IOWA

Monitoring Well	Sample Date	Ground Elevation	Top of Screen Elevation	GW Elevation	Benzene ug/L	Toluene ug/L	Ethylbenz ug/L	Xylene ug/L	TEH-D ug/L	TEH-WO ug/L
MW-1	9/23/1994	1268.47	1266.24	1265.31	4	26	12	17	400	NA
MW-1	3/14/2006	1268.47	1266.24	1268.47	<1	<1	<1	<2	<100	<100
MW-1	4/10/2008	1268.47	1266.24	1266.06	<4	6	<4	<8	<100	<100
MW-1	10/21/2008	1268.47	1266.24	1266.05	<1	1.1	<1	<2	<100	<100
MW-1	6/12/2009	1268.47	1266.24	1266.12	<1	<1	15.2	<2	N	N
MW-1	9/2/2009	1268.47	1266.24	1265.46	<1	<1	<1	<2	N	N
MW-1	3/18/2010	1268.47	1266.24	1268.32	<1	<1	<1	<2	N	N
MW-1	9/21/2010	1268.47	1266.24	1264.99	<1	<1	<1	<2	N	N
MW-1	2/28/2011	1268.47	1266.24	1265.52	18.8	2.2	<1.0	<2	N	N
MW-1	10/27/2011	1268.47	1266.24	1264.73	<2	2.9	<2	<4	N	N
MW-1	3/5/2012	1268.47	1266.24	1265.21	<1	<1	<1	<2	N	N
MW-4	9/23/1994	1273.09	1273.54	1268.62	2500	1340	360	1890	5000	NA
MW-4	3/14/2006	1273.09	1273.54	1273.09	1510	<5	189	532	2200	<100
MW-4	9/7/2006	1273.09	1273.54	1273.28	1950	26	200	950	2300	<100
MW-4	4/12/2007	1273.09	1273.54	1267.40	1590	59	218	532	2000	200
MW-4	11/26/2007	1273.09	1273.54	1270.11	2350	26	255	1070	<100	<100
MW-4	4/10/2008	1273.09	1273.54	1267.31	5210	2550	757	3470	<100	<100
MW-4	10/21/2008	1273.09	1273.54	1267.79	3090	343	400	1420	1200	<100
MW-4	6/12/2009	1273.09	1273.54	1267.8	1110	221	204	837	N	N
MW-4	9/2/2009	1273.09	1273.54	1267.77	173	20.1	70.7	259	N	N
MW-4	3/18/2010	1273.09	1273.54	1267.88	867	14.1	174	278	N	N
MW-4	9/21/2010	1273.09	1273.54	1266.96	1140	10	146	189	N	N
MW-4	2/28/2011	1273.09	1273.54	1267.51	3650	<10	627	1170	N	N
MW-4	10/27/2011	1273.09	1273.54	1267.12	1510	9	186	574	N	N
MW-4	10/27/2011	1273.09	1273.54	1266.24	305	21.3	166	269	N	N
MW-6	9/23/1994	1274.10	1274.24	1269.34	2850	1040	484	5250	13600	NA
MW-6	3/14/2006	1274.10	1274.24	1274.10	168	<5	84.00	23	1300	<100
MW-6	9/7/2006	1274.10	1274.24	1273.84	177	3	23	4	1200	<100
MW-6	4/12/2007	1274.10	1274.24	1268.96	61	<2	9	6	400	<100
MW-6	11/26/2007	1274.10	1274.24	1269.71	1340	24	344	1010	2400	<100
MW-6	4/10/2008	1274.10	1274.24	1269.35	1310	85	587	1340	<100	<100
MW-6	10/21/2008	1274.1	1274.24	1269.5	4300	185	1010	4050	3600	<100
MW-6	6/12/2009	1274.10	1274.24	1269.43	2050	14.6	289	310	N	N
MW-6	9/2/2009	1274.10	1274.24	1269.18	734	7.2	324	263	N	N
MW-6	3/18/2010	1274.1	1274.24	1268.47	1130	20.8	176	199	N	N
MW-6	9/21/2010	1274.1	1274.24	1268.65	2040	1400	603	939	N	N
MW-6	2/28/2011	1274.1	1274.24	1268.55	193	<5	247	195	N	N
MW-6	10/27/2011	1274.1	1274.24	1268.04	1430	10	159	497	N	N
MW-6	3/5/2012	1274.1	1274.24	1267.97	254	20.8	128	203	N	N
MW-7	9/23/1994	1274.71	1274.44	1268.83	533	611	112	835	1500	NA

* WRONG DATE

MW-7	3/14/2006	1274.71	1274.44		223	32	21	64	600	<100
MW-7	9/7/2006	1274.71	1274.44	1273.51	2220	89	202	1050	<100	400
MW-7	4/12/2007	1274.71	1274.44	1268.29	901	14	70	24	<100	<100
MW-7	11/26/2007	1274.71	1274.44	1270.03	2410	31	267	1110	<100	<100
MW-7	4/10/2008	1274.71	1274.44	1268.44	1600	315	129	304	<100	<100
MW-7	10/21/2008	1274.71	1274.44	1268.81	4020	71.9	543	2630	700	<100
MW-7	6/12/2009	1274.71	1274.44	1268.72	2340	35.3	249	1250	N	N
MW-7	9/2/2009	1274.71	1274.44	1268.38	2040	36.4	283	1010	N	N
MW-7	3/18/2010	1274.71	1274.44	1268.8	944	17.1	175	257	N	N
MW-7	9/21/2010	1274.71	1274.44	1268.15	2820	23	409	1610	N	N
MW-7	2/28/2011	1274.71	1274.44	1268.09	209	<5	35.5	48.8	N	N
MW-7	10/27/2011	1274.71	1274.44	1267.77	1250	10.4	121	390	N	N
MW-7	3/5/2012	1274.71	1274.44	1267.41	264	23.9	133	214	N	N
MW-8	9/23/1994	1275.87	1272.36	1268.95	1530	970	270	1930	3100	NA
MW-8	3/14/2006	1275.87	1272.36	1275.87	5320	1770	1850	8080	4200	<100
MW-8	9/7/2006	1275.87	1272.36	1275.29	3230	246	1260	4760	7800	<100
MW-8	4/12/2007	1275.87	1272.36	1268.71	<2	<2	<2	22	<100	<100
MW-8	11/26/2007	1275.87	1272.36	1270.61	2140	99	643	2730	4900	<100
MW-8	4/10/2008	1275.87	1272.36	1269.12	270	9	32	390	<100	<100
MW-8	10/21/2008	1275.87	1272.36	1267.02	658	18.8	134	430	1600	<100
MW-8	6/12/2009	1275.87	1272.36	1267.32	437	10.1	774	1980	N	N
MW-8	9/2/2009	1275.87	1272.36	1267.14	608	60.1	1030	3070	N	N
MW-8	3/18/2010	1275.87	1272.36	1271	<1	<1	1.7	2.5	N	N
MW-8	9/21/2010	1275.87	1272.36	1266.33	250	42	544	1110	N	N
MW-8	2/28/2011	1275.87	1272.36	1267.71	7.7	<5	77.7	178	N	N
MW-8	10/27/2011	1275.87	1272.36	1267.16	362	55.1	926	2090	N	N
MW-8	3/5/2012	1275.87	1272.36	1266.48	47.9	6.2	80.5	190	N	N
MW-201	9/7/2006	1275.18	1272.18	1274.29	10	27	3	4	<100	<100
MW-201	4/12/2007	1275.18	1272.18	1270.64	2	1	<1	4	<100	500
MW-201	11/26/2007	1275.18	1272.18	1270.32	1	<1	<1	<2	<100	<100
MW-201	4/10/2008	1275.18	1272.18	1270.77	<5	<5	<5	<10	<100	200
MW-201	10/21/2008	1275.18	1272.18	1270.88	<1	<1	1.1	<2	<100	100
MW-201	6/12/2009	1275.18	1272.18	1271.11	<1	<1	<1	<2	N	N
MW-201	9/2/2009	1275.18	1272.18	1267.31	<1	<1	<1	<2	N	N
MW-201	3/18/2010	1275.18	1272.18	1274.41	1.4	<1	<1	<2	N	N
MW-201	9/21/2010	1275.18	1272.18	1269.15	<1	<1	<1	<2	N	N
MW-201	2/28/2011	1275.18	1272.18	1271.07	<1	<1	<1	<2	N	N
MW-201	10/27/2011	1275.18	1272.18	1270.44	<2	<2	<2	<4	N	N
MW-201	3/5/2012	1275.18	1272.18	1269.13	<1	<1	<1	<2	N	N
MW-19N	9/7/2006	1274.36	1271.36	1273.16	3	8	11	22	2200	<100
MW-19N	4/12/2007	1274.36	1271.36	1273.07	7	4	3	7	<100	<100
MW-19N	11/26/2007	1274.36	1271.36	1271.22	2	1	3	3	<100	<100
MW-19N	4/10/2008	1274.36	1271.36	1272.21	2	2	3	5	<100	<100
MW-19N	10/21/2008	1274.36	1271.36	1271.51	1.2	2.2	1.8	<2	100	<100

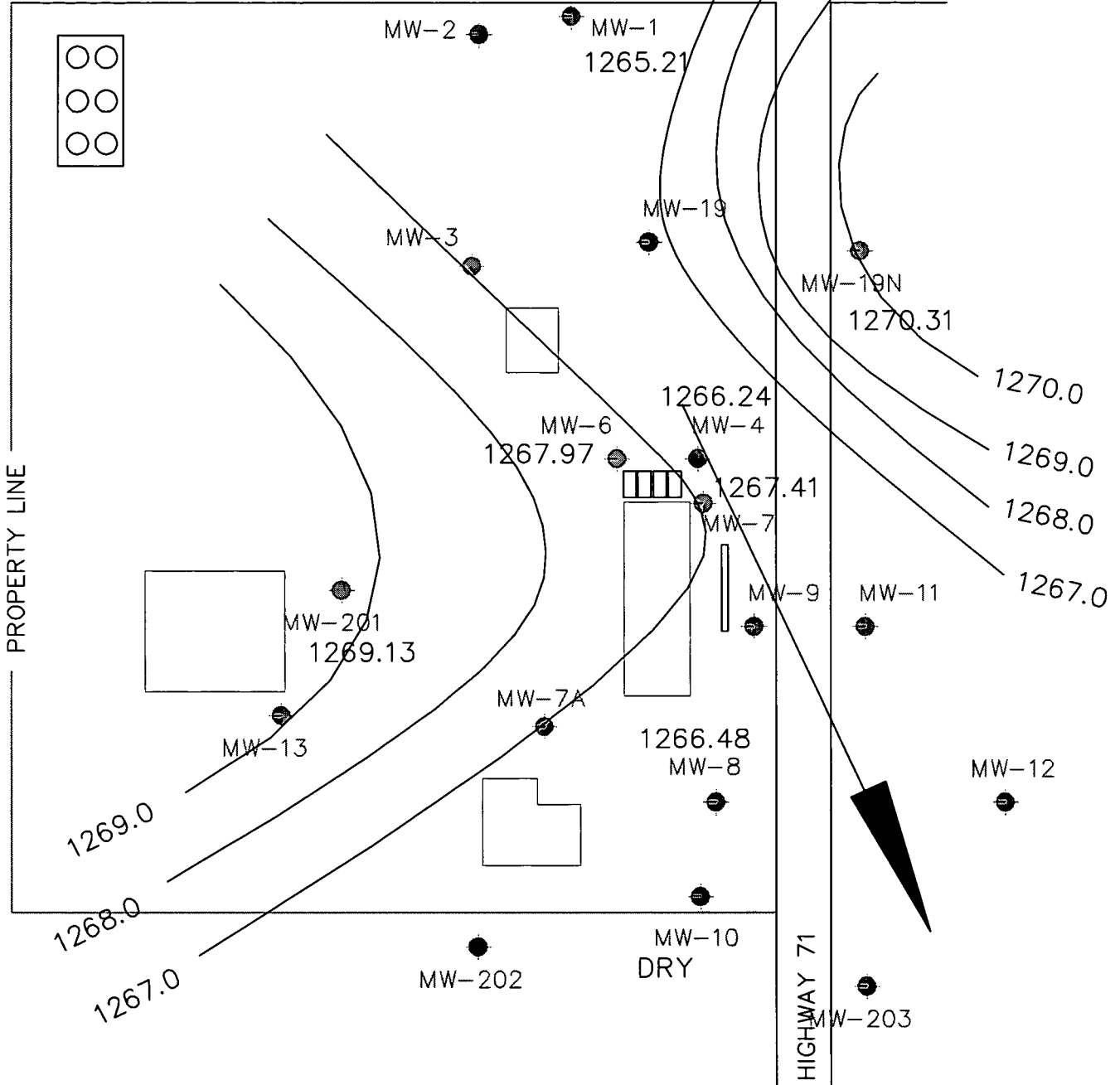
MW-19N	6/12/2009	1274.36	1271.36	1271.7	<1	<1	<1	<2	N	N
MW-19N	9/2/2009	1274.36	1271.36	1271.33	11.5	4.1	4.5	<2	N	N
MW-19N	3/18/2010	1274.36	1271.36	1273.54	7.3	3.3	2.5	2.7	N	N
MW-19N	9/21/2010	1274.36	1271.36	1270.53	<1	<1	<1	<2	N	N
MW-19N	2/28/2011	1274.36	1271.36	1271.33	16.5	1.6	<1	<2	N	N
MW-19N	10/27/2011	1274.36	1271.36	1270.87	15.4	11.9	4.2	5.2	N	N
MW-19N	3/5/2012	1274.36	1271.36	1270.31	<2	<2	<2	<4	N	N
MW-10	4/10/2008	1274.43	1271.36	1268.75	6	2	11	53	<100	<100
MW-10	10/21/2008	1274.43	1271.36	1266.81	12.7	2.4	28.2	112	600	<100
MW-10	6/12/2009	1274.43	1271.36	1267.69	11.8	<5	19.9	101	N	N
MW-10	9/2/2009	1274.43	1271.36	1267.18	21.9	4	34.3	137	N	N
MW-10	3/18/2010	1274.43	1271.36	1269.22	<1	<1	1.3	<2	N	N
MW-10	9/21/2010	1274.43	1271.36	1266.34	39	6	68	211	N	N
MW-10	2/28/2011	1274.43	1271.36	1268.39	18.5	<5	24.4	133	N	N
MW-10	10/27/2011	1274.43	1271.36	1267.94	9.2	<5	49.8	201	N	N
MW-10	3/5/2012	1274.43	1271.36	dry	N	N	N	N	N	N

GROUNDWATER FLOW DIRECTION MAP

GROUNDWATER FLOW DIRECTION MAP



HIGHWAY 217



PROPERTY LINE

HIGHWAY 71

● = Monitoring Well

0 75
SCALE IN FEET

MPS ENGINEERS Environmental Consultants			
PROJECT AL'S CORNER OIL COMPANY CARROLL, IOWA			
JOB NO. 1508	DRAWN BY A	DATE 4.13.12	DRAWN BY AAP

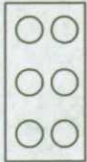
GROUNDWATER CONTAMINATION PLUME MAP

GW CONTAMINATION PLUME MAP (BENZENE)

MW-18



HIGHWAY 217



MW-2

MW-1

<1

MW-3

MW-19

MW-19N

<2

PROPERTY LINE

5

290

305

MW-6

254

MW-4

264

MW-7

MW-9

MW-11

MW-201

<1

MW-13

MW-7A

47.9

MW-8

MW-12

MW-202

MW-10

DRY

HIGHWAY 71

MW-203

MW-16

● = Monitoring Well

0 75

SCALE IN FEET

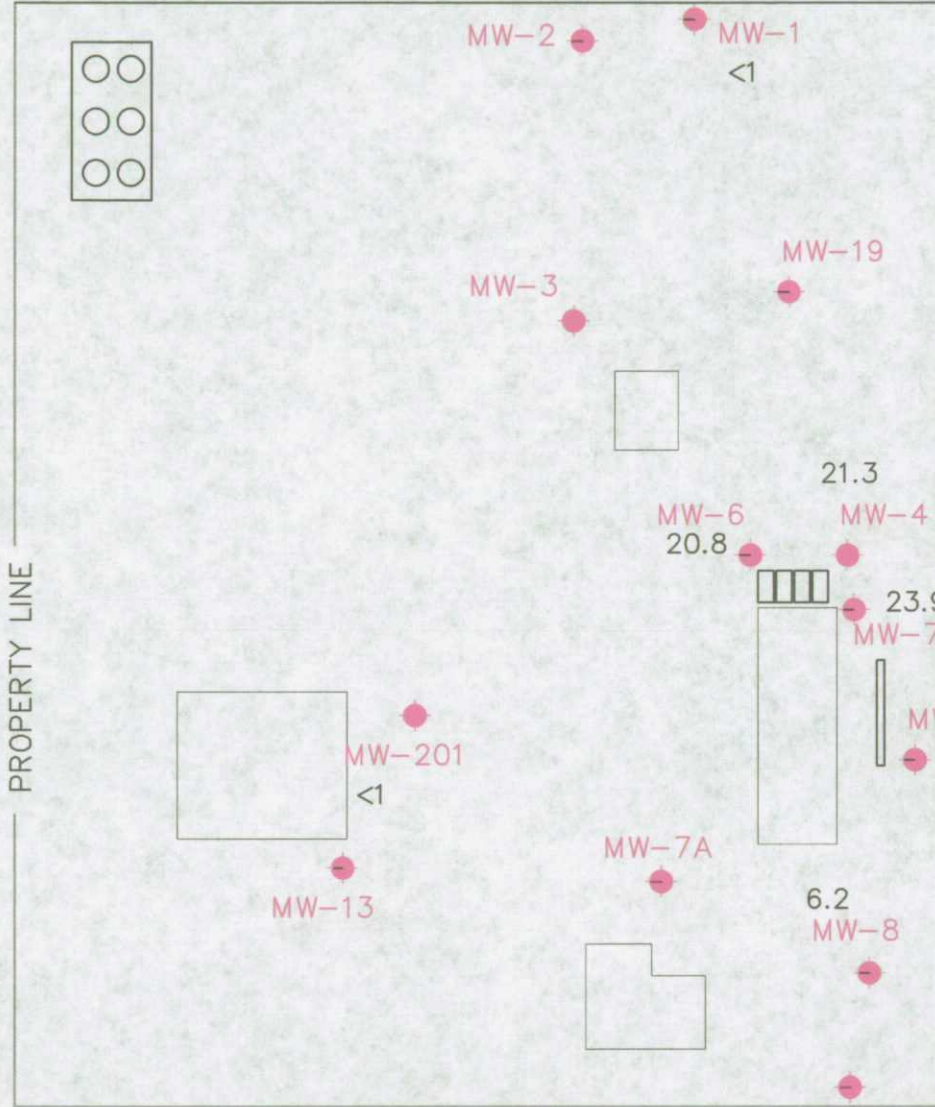
MPS ENGINEERS
Environmental Consultants

PROJECT			
AL'S CORNER OIL COMPANY CARROLL, IOWA			
JOB NO.	DWG. NO.	DATE	DRAWN
1508	A	4.13.12	AAP

GW CONTAMINATION PLUME MAP (TOLUENE)



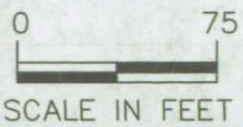
HIGHWAY 217



PROPERTY LINE

HIGHWAY 71

● = Monitoring Well



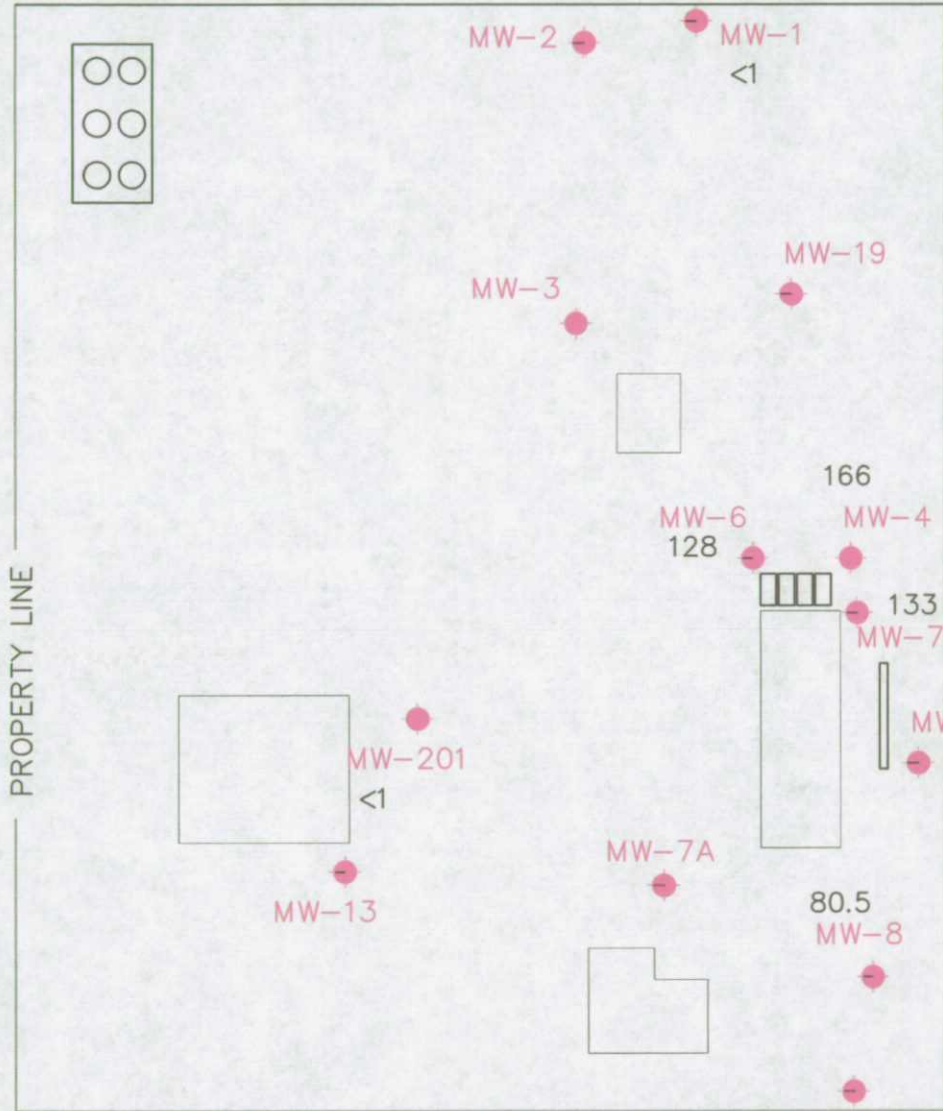
MPS ENGINEERS
Environmental Consultants

PROJECT	AL'S CORNER OIL COMPANY CARROLL, IOWA		
SUB NO.	1508	DATE	4.13.12
REV.		BY	AAP

GW CONTAMINATION PLUME MAP (ETHYLBENZENE)



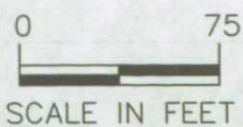
HIGHWAY 217



PROPERTY LINE

HIGHWAY 71

● = Monitoring Well



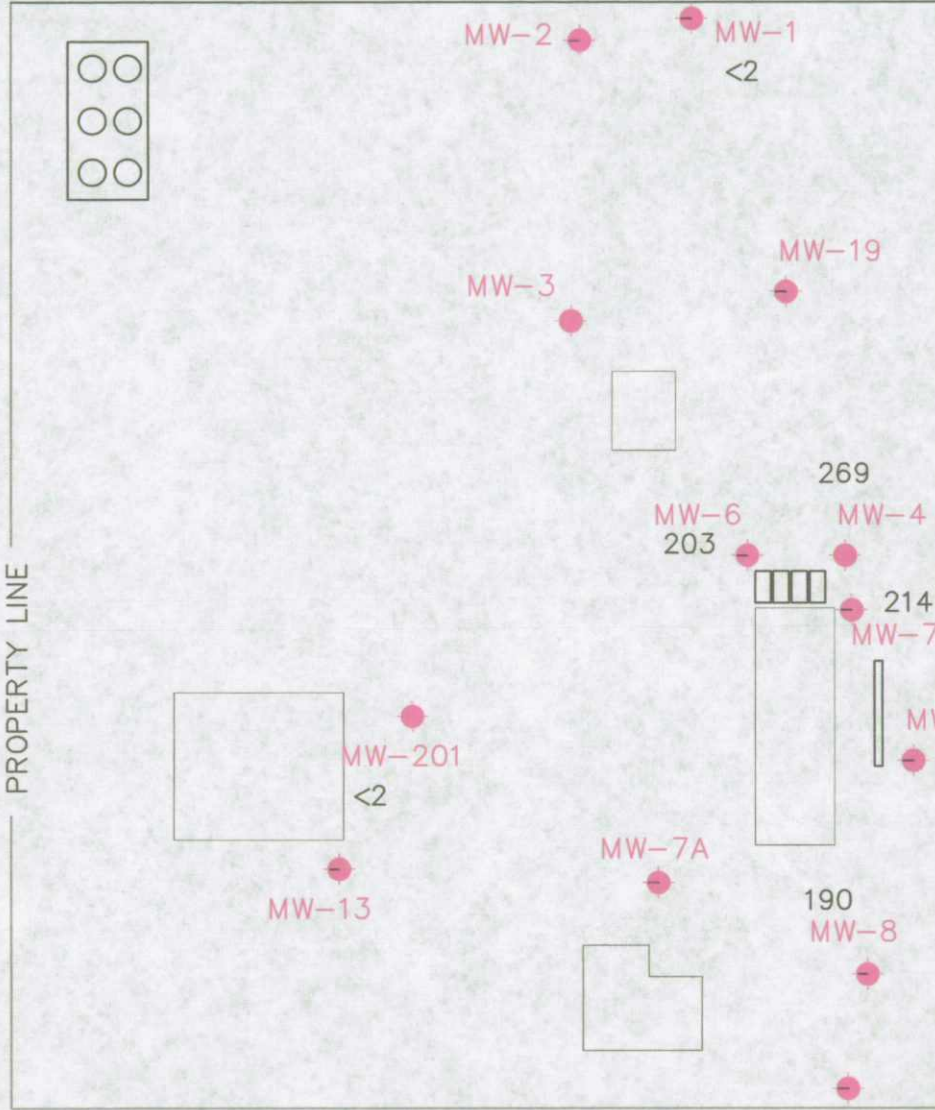
MPS ENGINEERS
Environmental Consultants

PROJECT			
AL'S CORNER OIL COMPANY CARROLL, IOWA			
JOB NO.	DWG. NO.	DATE	DRAWN
1508	A	4.13.12	AAP

MW-18
GW CONTAMINATION PLUME MAP (XYLENE)



HIGHWAY 217



PROPERTY LINE

HIGHWAY 71

● = Monitoring Well



MPS ENGINEERS Environmental Consultants			
PROJECT AL'S CORNER OIL COMPANY CARROLL, IOWA			
JOB NO. 1508	DWG. A REL.	DATE 4.13.12	DRAWN AAP

LABORATORY DATA SHEETS

ANALYTICAL REPORT

March 09, 2012

Work Order: 1C20371

Page 1 of 4

Report To
Amit Pradhan MPS Engineers 1444 Illinois St. Des Moines, IA 50314

Work Order Information
Date Received: 03/07/2012 10:35AM Collector: Wilkinson, Charles Phone: (515) 221-9832 PO Number: 1508

Project : UST

Project Number: ALS Corner Oil #1508

Analyte	Result	MRL	Batch	Method	Analyst	Analyzed	Qualifier
1C20371-01	MW 8			Matrix:Water		Collected: 03/05/12 10:00	
Benzene	47.9 ug/L	1.0	1VC0175	Iowa OA-1	TKD	03/08/12 10:32	
Toluene	6.2 ug/L	1.0	1VC0175	Iowa OA-1	TKD	03/08/12 10:32	
Ethylbenzene	80.5 ug/L	1.0	1VC0175	Iowa OA-1	TKD	03/08/12 10:32	
Xylenes, total	190 ug/L	2.0	1VC0175	Iowa OA-1	TKD	03/08/12 10:32	
Surrogate: Chlorobenzene	108 %			72-122	TKD	03/08/12 10:32	
1C20371-02	MW 201			Matrix:Water		Collected: 03/05/12 10:15	
Benzene	<1.0 ug/L	1.0	1VC0175	Iowa OA-1	TKD	03/08/12 11:13	
Toluene	<1.0 ug/L	1.0	1VC0175	Iowa OA-1	TKD	03/08/12 11:13	
Ethylbenzene	<1.0 ug/L	1.0	1VC0175	Iowa OA-1	TKD	03/08/12 11:13	
Xylenes, total	<2.0 ug/L	2.0	1VC0175	Iowa OA-1	TKD	03/08/12 11:13	
Surrogate: Chlorobenzene	112 %			72-122	TKD	03/08/12 11:13	
1C20371-03	MW 1			Matrix:Water		Collected: 03/05/12 10:30	
Benzene	<1.0 ug/L	1.0	1VC0175	Iowa OA-1	TKD	03/08/12 11:54	
Toluene	<1.0 ug/L	1.0	1VC0175	Iowa OA-1	TKD	03/08/12 11:54	
Ethylbenzene	<1.0 ug/L	1.0	1VC0175	Iowa OA-1	TKD	03/08/12 11:54	
Xylenes, total	<2.0 ug/L	2.0	1VC0175	Iowa OA-1	TKD	03/08/12 11:54	
Surrogate: Chlorobenzene	106 %			72-122	TKD	03/08/12 11:54	
1C20371-04	MW 19			Matrix:Water		Collected: 03/05/12 10:45	
Benzene	<2.0 ug/L	2.0	1VC0175	Iowa OA-1	TKD	03/08/12 13:56	
Toluene	<2.0 ug/L	2.0	1VC0175	Iowa OA-1	TKD	03/08/12 13:56	
Ethylbenzene	<2.0 ug/L	2.0	1VC0175	Iowa OA-1	TKD	03/08/12 13:56	
Xylenes, total	<4.0 ug/L	4.0	1VC0175	Iowa OA-1	TKD	03/08/12 13:56	
Surrogate: Chlorobenzene	107 %			72-122	TKD	03/08/12 13:56	
1C20371-05	MW 4			Matrix:Water		Collected: 03/05/12 11:00	

The results in this report apply to the samples analyzed in accordance with the chain of custody document. This analytical report must be reproduced in its entirety. Samples were preserved in accordance with 40 CFR for pH adjustment unless otherwise noted. MRL= Method Reporting Limit.

MPS Engineers
1444 Illinois St.
Des Moines, IA 50314

March 09, 2012
Page 2 of 4

Work Order: 1C20371

Analyte	Result	MRL	Batch	Method	Analyst	Analyzed	Qualifier
1C20371-05	MW 4			Matrix: Water		Collected: 03/05/12 11:00	
Benzene	305 ug/L	10.0	1VC0175	Iowa OA-1	TKD	03/08/12 13:15	
Toluene	21.3 ug/L	10.0	1VC0175	Iowa OA-1	TKD	03/08/12 13:15	
Ethylbenzene	166 ug/L	10.0	1VC0175	Iowa OA-1	TKD	03/08/12 13:15	
Xylenes, total	269 ug/L	20.0	1VC0175	Iowa OA-1	TKD	03/08/12 13:15	
Surrogate: Chlorobenzene	92.7 %			72-122	TKD	03/08/12 13:15	
1C20371-06	MW 6			Matrix: Water		Collected: 03/05/12 11:15	
Benzene	254 ug/L	5.0	1VC0175	Iowa OA-1	TKD	03/08/12 15:18	
Toluene	20.8 ug/L	5.0	1VC0175	Iowa OA-1	TKD	03/08/12 15:18	
Ethylbenzene	128 ug/L	5.0	1VC0175	Iowa OA-1	TKD	03/08/12 15:18	
Xylenes, total	203 ug/L	10.0	1VC0175	Iowa OA-1	TKD	03/08/12 15:18	
Surrogate: Chlorobenzene	106 %			72-122	TKD	03/08/12 15:18	
1C20371-07	MW 7			Matrix: Water		Collected: 03/05/12 11:30	
Benzene	264 ug/L	5.0	1VC0175	Iowa OA-1	TKD	03/08/12 14:37	
Toluene	23.9 ug/L	5.0	1VC0175	Iowa OA-1	TKD	03/08/12 14:37	
Ethylbenzene	133 ug/L	5.0	1VC0175	Iowa OA-1	TKD	03/08/12 14:37	
Xylenes, total	214 ug/L	10.0	1VC0175	Iowa OA-1	TKD	03/08/12 14:37	
Surrogate: Chlorobenzene	90.7 %			72-122	TKD	03/08/12 14:37	

The results in this report apply to the samples analyzed in accordance with the chain of custody document. This analytical report must be reproduced in its entirety. Samples were preserved in accordance with 40 CFR for pH adjustment unless otherwise noted. MRL= Method Reporting Limit.

MPS Engineers
1444 Illinois St.
Des Moines, IA 50314

March 09, 2012
Page 3 of 4

Work Order: 1C20371

Determination of Volatile Petroleum Hydrocarbons - Quality Control
Keystone Laboratories, Inc. - Newton

Analyte	Result	Reporting Limit	Units	Spike Level	Source Result	%REC	%REC Limits	RPD	RPD Limit	Notes
Batch 1VC0175 - EPA 5030B										
Blank (1VC0175-BLK1) Prepared & Analyzed: 03/07/12										
Surrogate: Chlorobenzene	117		ug/L	113.700		102	72-122			
Benzene	ND	1.0	"							
Toluene	ND	1.0	"							
Ethylbenzene	ND	1.0	"							
Xylenes, total	ND	2.0	"							
LCS (1VC0175-BS1) Prepared & Analyzed: 03/07/12										
Surrogate: Chlorobenzene	119		ug/L	113.700		105	70-130			
Benzene	118.3	1.0	"	100.500		118	63-137			
Toluene	137.7	1.0	"	139.900		98.4	74-129			
Ethylbenzene	137.3	1.0	"	107.800		127	67-132			
Xylenes, total	230.6	2.0	"	247.100		93.3	74-132			
LCS (1VC0175-BS2) Prepared & Analyzed: 03/07/12										
Surrogate: Chlorobenzene	113		ug/L	113.700		99.6	70-130			
LCS Dup (1VC0175-BSD2) Prepared: 03/07/12 Analyzed: 03/08/12										
Surrogate: Chlorobenzene	117		ug/L	113.700		103	70-130			
Matrix Spike (1VC0175-MS1) Source: 1B21410-02 Prepared & Analyzed: 03/07/12										
Surrogate: Chlorobenzene	126		ug/L	113.700		111	70-130			
Benzene	1137	10.0	"	1005.00	ND	113	59-139			
Toluene	1490	10.0	"	1399.00	ND	106	77-125			
Ethylbenzene	1132	10.0	"	1078.00	ND	105	72-124			
Xylenes, total	2718	20.0	"	2471.00	ND	110	77-130			
Matrix Spike Dup (1VC0175-MSD1) Source: 1B21410-02 Prepared & Analyzed: 03/07/12										
Surrogate: Chlorobenzene	119		ug/L	113.700		105	70-130			
Benzene	1201	10.0	"	1005.00	ND	119	59-139	5.47	20	
Toluene	1595	10.0	"	1399.00	ND	114	77-125	6.82	20	
Ethylbenzene	1187	10.0	"	1078.00	ND	110	72-124	4.75	20	
Xylenes, total	2886	20.0	"	2471.00	ND	117	77-130	5.97	20	

ND = Non Detect; REC= Recovery; RPD= Relative Percent Difference

The results in this report apply to the samples analyzed in accordance with the chain of custody document. This analytical report must be reproduced in its entirety. Samples were preserved in accordance with 40 CFR for pH adjustment unless otherwise noted. MRL= Method Reporting Limit.

MPS Engineers
1444 Illinois St.
Des Moines, IA 50314

March 09, 2012
Page 4 of 4

Work Order: 1C20371

Certified Analyses included in this Report

Method/Matrix	Analyte	Certifications
<i>Iowa OA-1 in Water</i>		
	Benzene	SIA1X
	Toluene	SIA1X
	Ethylbenzene	SIA1X
	Xylenes, total	SIA1X

Code	Description	Number	Expires
KS-KC	Kansas Department of Health and Environment-KC	E-10110	04/30/2012
KS-NT	Kansas Department of Health and Environment	E-10287	10/30/2012
MO-KC	Missouri Department of Natural Resources	140	04/30/2012
NELAC	New Jersey Department of Environmental Protection	IA001	06/30/2012
SIA1X	Iowa Department of Natural Resources	95	02/01/2012

End of Report



Keystone Laboratories, Inc.

Sue Thompson
Project Manager II

CHAIN OF CUSTODY RECORD



600 E. 17th St. S.
Newton, IA 50208
Phone: 641-792-8451
Fax: 641-792-7989

3012 Ansbrough Ave.
Waterloo, IA 50701
Phone: 319-235-4440
Fax: 319-235-2480
www.keystonelabs.com

1155 Adams, Suite 120
Kansas City, KS 66103
Phone: 913-321-7856
Fax: 913-321-7937

PAGE 1 OF 1

PRINT OR TYPE INFORMATION BELOW
 SAMPLER: Charles Wilkinson
 SITE NAME: Als Corner Oil Co # 1508
 ADDRESS: Hwy 71
 CITY/ST/ZIP: Carroll IA
 PHONE: _____

REPORT TO:
 NAME: Amro Pradhan
 COMPANY NAME: MPS
 ADDRESS: 1444 Illinois St
 CITY/ST/ZIP: Des Moines IA 50314
 PHONE: 515 221 9832
 FAX: 515 222 2625

BILL TO:
 NAME: _____
 COMPANY NAME: SAWE
 ADDRESS: _____
 CITY/ST/ZIP: _____
 PHONE: _____
 Keystone Quote No.: _____
(If Applicable)

CLIENT SAMPLE NUMBER	DATE	TIME	SAMPLE LOCATION	NO. OF CONTAINERS	MATRIX	GRAB/COMPOSITE	ANALYSES REQUIRED										LAB USE ONLY		
							1	2	3	4	5	6	7	8	9	10	11	12	LABORATORY WORK ORDER NO.
MU 8	3-5-12	1000		2	H ₂ O	G												1C26371	
MW 201	↓	1015		↓	↓	↓													01
MW 1	↓	1030		↓	↓	↓													02
MW 19	↓	1045		↓	↓	↓													03
MW 4	↓	1100		↓	↓	↓													04
MW 6	↓	1115		↓	↓	↓													05
MW 7	↓	1130		↓	↓	↓													06
																			07

Relinquished by: (Signature) <u>Ch Wilkinson</u>	Date	Received by: (Signature)	Date	Turn-Around: <input checked="" type="checkbox"/> Standard <input type="checkbox"/> Rush
	Time		Time	
Relinquished by: (Signature)	Date	Received for Lab by: (Signature) <u>Ed Wheeler</u>	Date	Remarks:
	Time		Time	