



December 23, 2010

CON:12-15
Doc # 23933

Dan Cook
Environmental Specialist Senior
Iowa Department of Natural Resources
502 E. 9th Street
Des Moines, Iowa 50309

INDIANOLA, IOWA
SOUTH PLANT LIFT STATION EQUALIZATION BASIN EXPANSION
SITE ASSESSMENT PLAN - SOIL

The City of Indianola is located in Warren County approximately 10 miles south of Des Moines, Iowa and 23 miles west of Knoxville, Iowa. The population of the City of Indianola was 12,998 in 2000, and the estimated population in 2008 was 14,361 according to the US Census Bureau.

The purpose of the South Plant Lift Station Equalization Basin Expansion is to enhance the reliability, increase capacity, and prevent discharge of untreated wastewater to better safely and reliably operate the City of Indianola's wastewater system for at least the next 20 years. The project will expand equalization capacity by increasing the size of the existing equalization basin. The basin expansion is in the location of a firing range. The existing wet weather flow lift station at the South Plant will be expanded with new piping, pumps, and a splitter box structure. The work will provide capacity to hold wet weather flows until such time as they can be transferred to the north wastewater treatment plant located north of the City of Indianola.

Positive environmental effects will be a reduction of the human health and safety risks associated with wastewater backing up into residential basements. Additional positive environmental effects will be a reduction in the number of events when quantities of untreated or partially treated wastewater must be discharged to the environment.

An environmental review was performed by the Iowa Department of Natural Resources and a Finding of No Significant Impact was issued on August 3, 2010. This environmental review stated the following:

- The project will not significantly affect the pattern and type of land use or growth and distribution of population.
- The project will not conflict with local, regional or State land use plans or policies.

- The project will not significantly impact wetlands provided the terms of Nationwide Permit No. 12 are abided by.
- The project will not impact threatened or endangered species or their habitats provided that there is no removal of trees that could provide habitat for the Indiana Bat between April 15th and September 15th.
- The project will not displace population, alter the character of existing residential areas, or convert farmlands to non-agricultural purposes.
- The project will not impact the 100-year floodplain provided the excess spoil material and boring mud is either removed or spread thinly.
- No Historic Properties will be adversely affected by the project.
- The project will not have a significant adverse effect upon local ambient air quality provided the applicant takes reasonable precautions to prevent the discharge of visible emissions of fugitive dusts beyond the lot line of the property during the project work.
- No significant impact to surface water quality, fish, shellfish, wildlife, or their natural habitat is expected provided that an NPDES General Permit No. 2 is obtained and the terms abided by.
- The project will not have a significant adverse effect upon local ambient noise levels, surface water quantity, groundwater quality or quantity, or water supply.
- Minimum separation distances will be maintained.

The FONSI and all pertinent permits were issued by the Iowa DNR for the South Plant Lift Station Equalization Basin Expansion project. A preconstruction meeting was held on October 20, 2010, and construction started soon after.

The first part of the project to be constructed was the expansion of the equalization basin, which involved removing the firing range. The firing range was first in use in 1988 and was generally used by Indianola, Norwalk, ICE, Pleasant Hill, and Carlisle personnel on a twice yearly basis, and occasionally used by ISP. The soils from the firing range were stripped and separated to be reused for topsoil on the lagoon expansion. Soils for the berm construction were from a borrow site located on the northwest corner of the South Plant site. The soil from the firing range was respread on the newly constructed berm in a layer 6 to 10 inches thick.

A notice from Dan Cook with the Iowa DNR stating the soil from the firing range should have been tested for lead contamination was received by the City of Indianola on November 29, 2010. Team Services, Inc. collected three samples on November 30, 2010. The test results dated December 2, 2010 showed lead concentrations of 89.8, 74.0, and 358 mg/kg.

Dan Cook
December 23, 2010
Page 3

Dan Cook collected four samples on December 3, 2010. The test results showed lead concentrations of 58.63, 53.84, 57.02, and 2,589.05. Due to the one sample with a lead concentration greater than the 400 mg/kg limit, a Notice of Violation was issued on December 9, 2010.

The potentially contaminated soils from the shooting range were stripped and respread on the top 6 to 10 inches of the new berm embankment along the outer slope, the top of the berm and the top 2 feet of the inner slope. The area where the potential for contamination exists will be divided into grids with each grid approximately 25 feet by 25 feet or 18 feet by 35 feet in size. This results in approximately 46 test areas. Each grid area will be tested for lead and antimony. Any area that tested above the required limit for lead or antimony, 400 ppm and 31 ppm respectively, will be removed and properly disposed. The area removed and properly disposed will be all the soils within that particular grid to the depth of the spread soils of 6 to 10 inches.

If you have any questions or comments, please contact us at 225-8000.

VEENSTRA & KIMM, INC.

A handwritten signature in black ink, appearing to read "Forrest Aldrich". The signature is fluid and cursive, with the first name "Forrest" and last name "Aldrich" clearly distinguishable.

Forrest S. Aldrich

FSA:rlf
169235

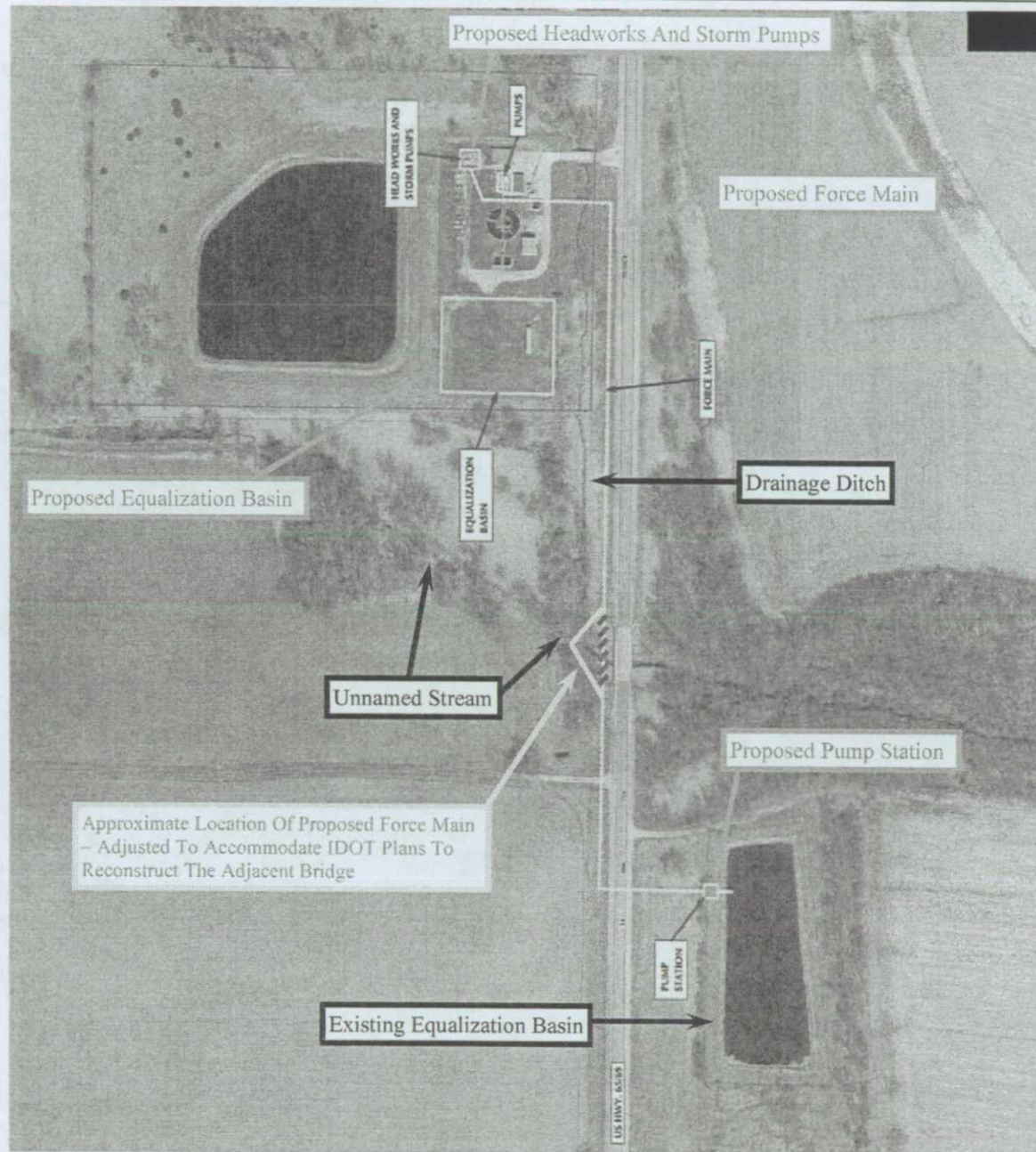
Enclosures

cc: Tim Zisoff, City of Indianola w/enclosures
Dan Miers, City of Indianola w/enclosures

Base Map Provided By Veenstra & Kimm, Inc.



North



Site Sketch

Indianola Sanitary Sewer Improvements – Phase 3
Indianola, IA 50125



State Revolving Fund
401 SW 7th Street, Suite M
Des Moines, IA 50309-4611

USGS 7.5 Minute Quadrangle: Indianola, IA (1983)

County: Warren County, Iowa

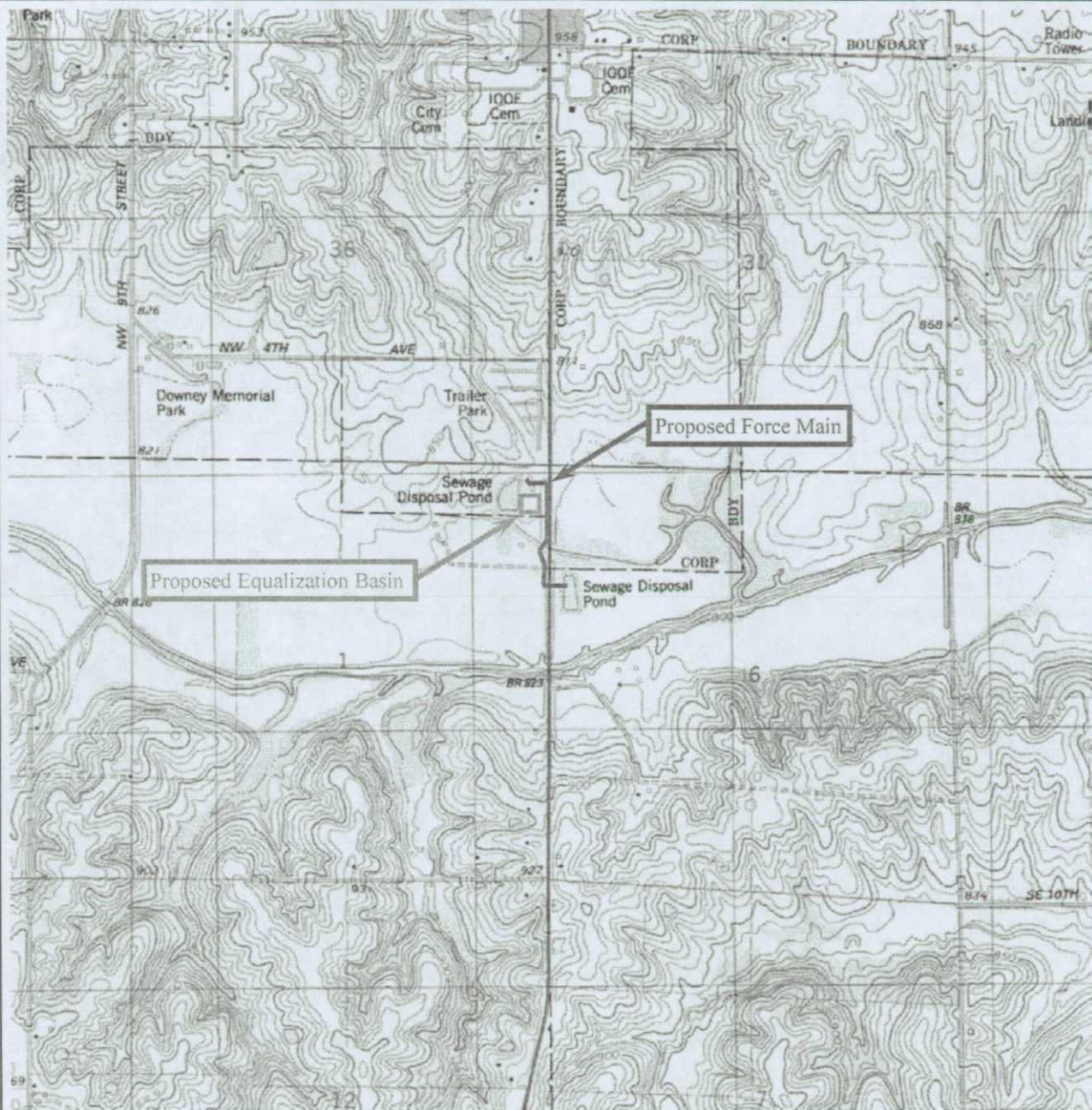
Township: Otter – NW¼ of Section: 06, Township: 75 N, Range: 23 W

Township: White Oak – NE¼ of Section: 01, Township: 75 N, Range: 24 W

Scale: 1 Inch = 2,000 Feet / Contour Interval: 10 Feet



North

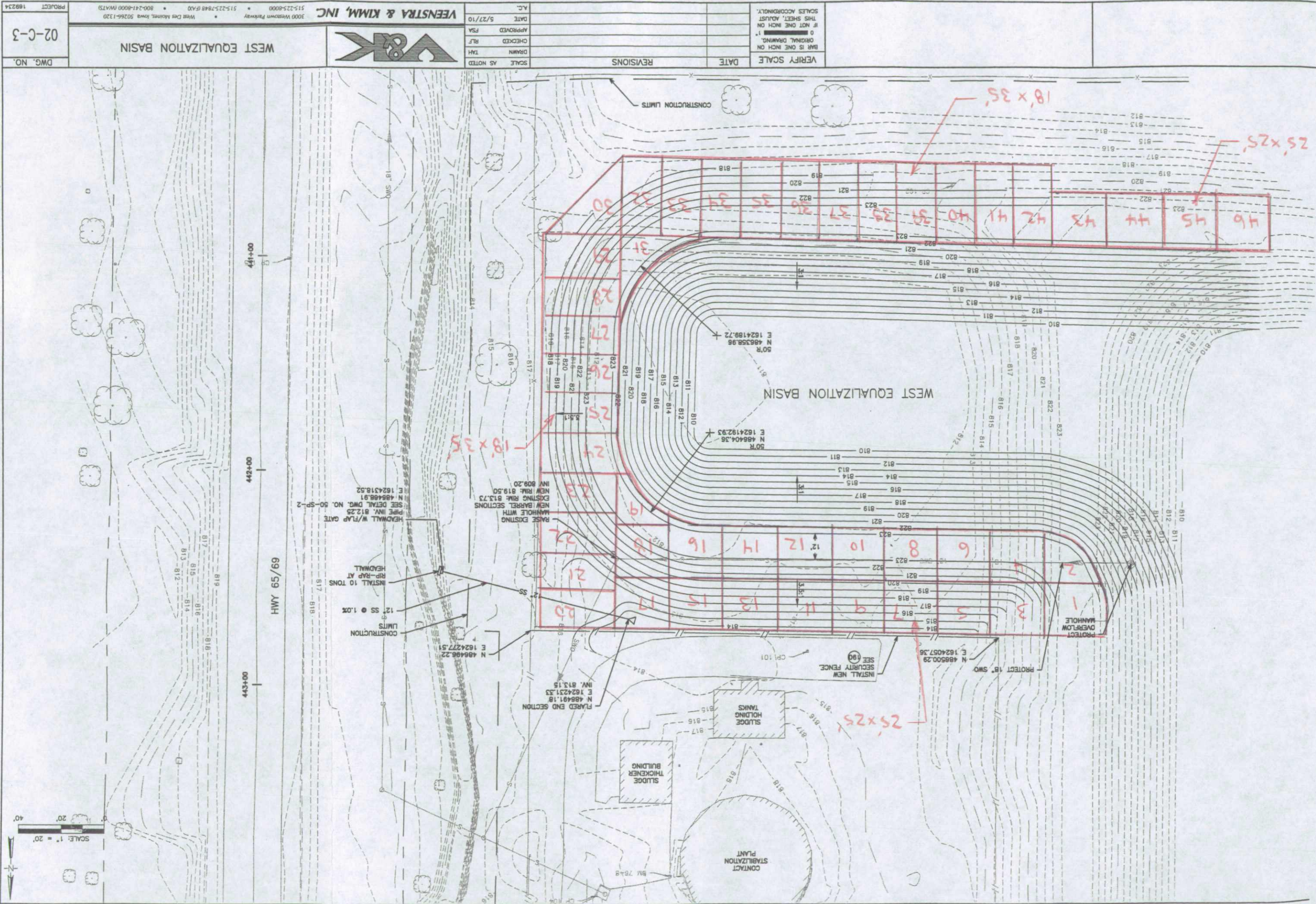


USGS Topographic Map

Indianola Sanitary Sewer Improvements – Phase 3
Indianola, IA 50125



State Revolving Fund
401 SW 7th Street, Suite M
Des Moines, IA 50309-4611



PROJECT 169234		VEENSTRA & KIMM, INC.		3000 Westown Parkway 515-225-8000 • 515-225-7848 (FAX) • 800-241-8000 (NAT'L)	
DWG. NO. 02-C-3		SCALE AS NOTED		VERIFY SCALE	
		DATE		REVISIONS	
		DRAWN TAY		CHECKED RLF	
		APPROVED FSA		DATE 5/27/10	
		A.C.		Scales accordingly.	
				IF NOT ONE INCH ON THIS SHEET, ADJUST	
				BAR IS ONE INCH ON ORIGINAL DRAWING	

